



Landscape Restoration Team

Meeting 22

Wednesday, November 14, 2012

Facilitated by:



LR Team Meeting 22 Agenda

Topics	Timing
1. Introductions, ice breaker, review of agenda and new organizing documents	10:00 – 10:15
2. Update from spatial heterogeneity sub-team (Kristen)	10:15 – 10:45
3. Results of social & economic monitoring (Kathie)	10:45 – 11:30
4. Review adaptive management process and narrative (Greg)	11:30 – 12:00

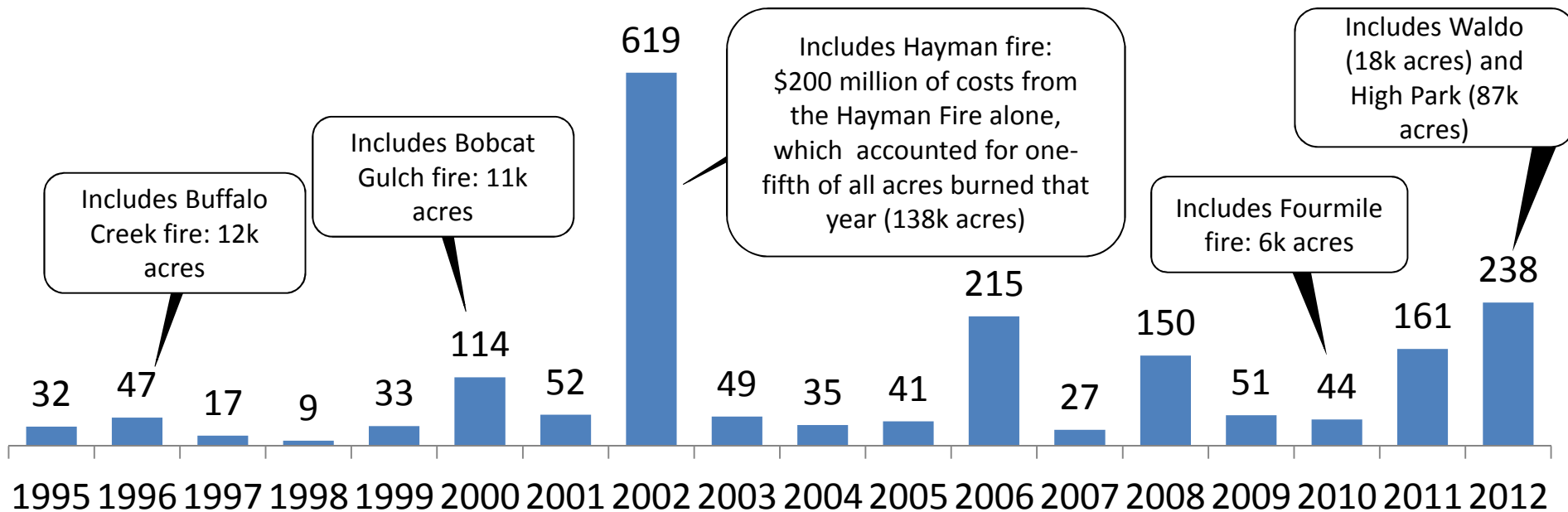
5. Break	12:00 – 12:30

6. Update on wildlife sub-team (Lynne)	12:30 – 12:45
7. Revisit understory sub-team charter (Paula)	12:45 – 1:00
8. Update on Jonas Transects (Jonas)	1:00 – 1:15
9. Recap old business:	1:15 – 1:50
1. Decision-making process and deadlines for Roundtable CFLR recommendations	
2. CFLR requirements for national indicators – what data to use and how to analyze and report it	
3. Review open action items in team work plan	
10. Plan next steps (including agenda for 12/12; 2013 calendar)	1:50 – 2:00



Colorado's Fire Seasons

Thousands of acres of wildfire per year (Total = 1.9 million acres of wildfire since 1995)



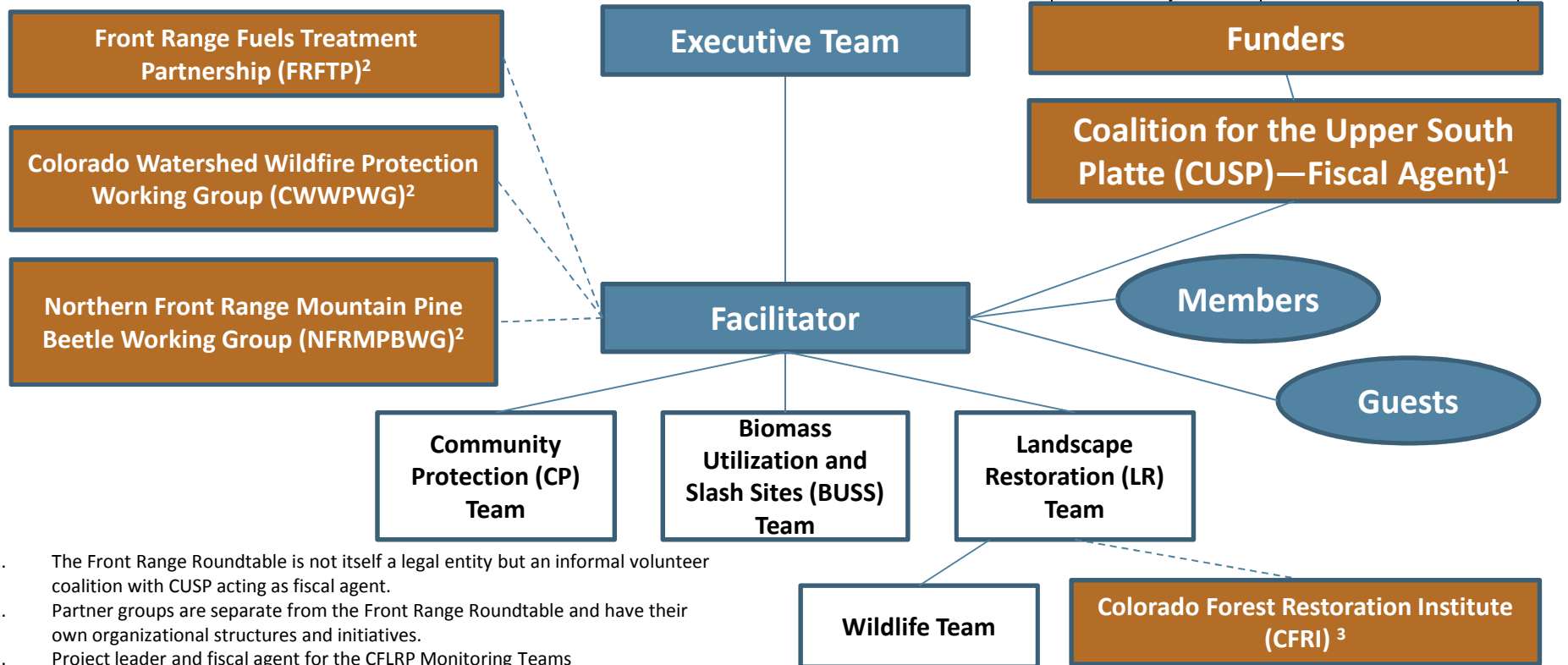
Sources: 1995 – 2010: Rocky Mountain Area and Coordination Center Annual Activity Report (2001-2004); Wildland Fire Activity by Cause, Combining Federal and Non-federal Agencies Within Each State (www.fs.fed.us/r2/fire/oo_annual_report.pdf); 2011 – 2012: http://www.nifc.gov/fireInfo/fireInfo_statistics.html



Roundtable Organization

- Roundtable
- Partners
- Mixed teams

Boulder County	National Forest Foundation
Clear Creek County	USFS-AR
Douglas County	USFS-Pike
Gilpin County	CSFS
El Paso County	TNC
Jefferson County	West Range Reclamation
Larimer County	RMRS
Park County	Denver Water
Teller County	NRCS



1. The Front Range Roundtable is not itself a legal entity but an informal volunteer coalition with CUSP acting as fiscal agent.
2. Partner groups are separate from the Front Range Roundtable and have their own organizational structures and initiatives.
3. Project leader and fiscal agent for the CFLRP Monitoring Teams

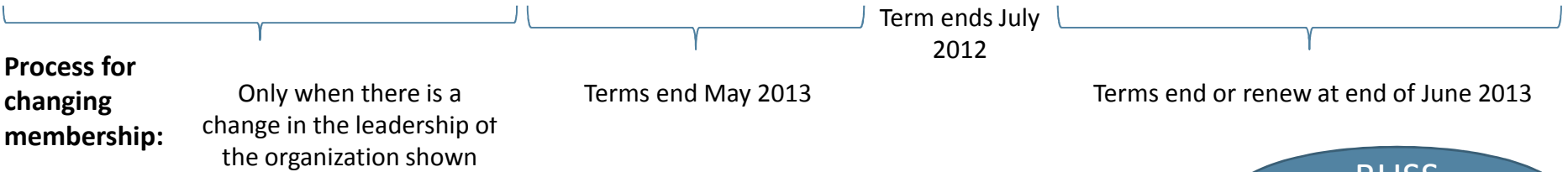


Executive Team Structure and Change Process

Size: At least 6 or no more than 9 members⁴

- Dedicated to certain organizations¹
- Dedicated to certain stakeholder groups²
- Open to other stakeholder groups³

Current Executive Team Membership								
USFS-AR Supervisor Glenn Casamassa	USFS-PSI Supervisor Jerri Marr	CSFS State Forester Joe Duda	Conserva- tion NGO Paige Lewis, The Nature Conservancy	County Commis- sioner— North Cindy Domenico, Boulder County	County Commis- sioner— South John Tighe, Park County	Treasurer Carol Ekarius, Coalition for the Upper South Platte	Landscape Restoration Team Liaison Pam Motley, West Range Reclamation	Community Protection Team Liaison Megan Davis, Boulder County



BUSS
liaison?

1. Three seats are dedicated permanently to these leadership positions from these organizations shown
2. Two seats are dedicated to these stakeholder groups shown with the representing organization rotating each year, as desired
3. One seat is dedicated for the fiscal agent of the Roundtable, one seat is for each of the two main working teams: the Community Protection Team and the Landscape Restoration Team. One or two seats are open to additional or other stakeholder groups with the stakeholder type and/or representing organization rotating each year as desired among: Conservation, County Commissioner, Energy, Insurance, Local Government, Planning, Private, Recreation, Science / Academic, State Government, Timber, or Water
4. Membership size can vary depending on the decisions of the Executive team and Roundtable needs / number of applicants

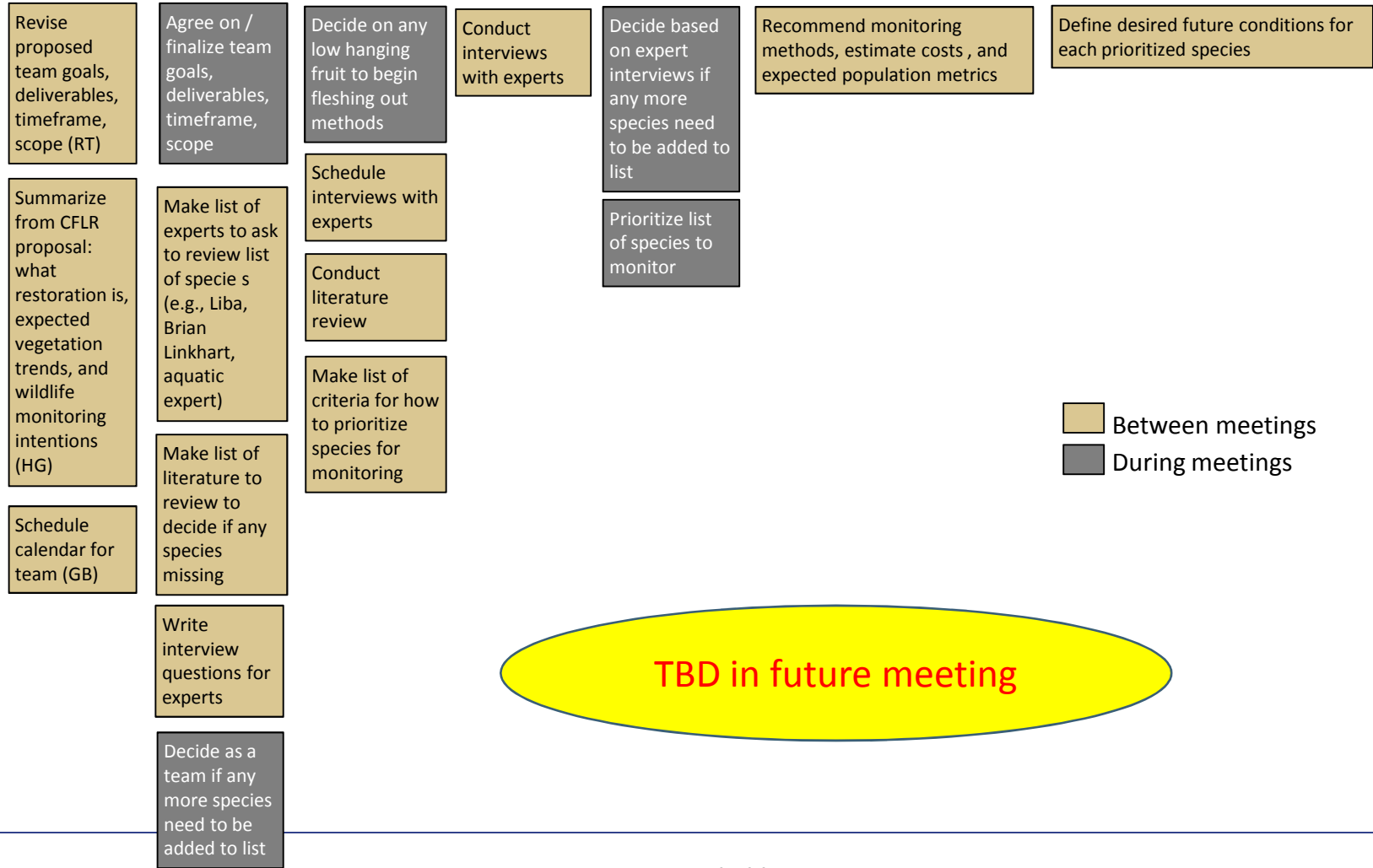


LR Team—Wildlife Sub-Team *DRAFT* High Level Work Plan

Roundtable Quarterly meeting: 11/30/12

Roundtable Quarterly meeting: 3/8/13

Roundtable Quarterly meeting: 5/31/13 Field season starts?

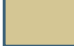


Between meetings (tan box)
During meetings (grey box)

TBD in future meeting



Proposed Decision Making Process within the Landscape Restoration Team

 Recommendation

1. Sensing tools:

1. Sensing tool: Thumbs up / down / sideways

2. Decision making Options:

1. → Consensus
 1. Win-Win: everyone supports idea (enthusiasm not required, all thumbs up but with reservations) (**proposed #1**)
 2. Can live with (**proposed fall back**)
 3. Win-lose / cannot live with (that person needs to come back with a solution, can't just halt progress)
2. Voting (majority, supermajority) - **proposed that this is uncollaborative**
3. Delegation to elected subteam (e.g., USFS rep, NGO rep, Science rep, etc.)
4. Fun (Avoidance, paper scissors, arm wrestling, tyranny (Pam = Exec Team liaison))

3. Timing =

1. Small decision: restrict decisions to “those in the room”
2. Big decisions: Set decisions needed in the future with time for members to process and give feedback (expectation that everyone reads notes and outcomes from meetings, provide input in advance if can't attend a meeting)
3. No decisions are irrevocable pending approval of home organizations



Landscape Restoration Team: CFLR Decisions Needed Through

CFLR-related decisions needed

Type of decision and expected timing

- | | |
|--|--|
| <p>1. How to allocate workloads on LR team (LR Team decides)</p> <p>a) When to update monitoring plan?</p> <p>b) What funding opportunities to pursue?</p> <p>c) What sub-teams to have and what are their missions?</p> | <p>1. Mix of spontaneous and scheduled decisions</p> <p>a) Scheduled decision – date TBD</p> <p>b) Spontaneous</p> <p>c) Variable (OK to launch an effort, if anyone has a problem they need to come to next meeting to voice)</p> |
| <p>2. What recommendations to make to USFS about priorities (LR Team makes recommendations to the Roundtable, the Roundtable makes recommendations to the USFS, the USFS makes final decisions)</p> <p>a) Adaptive management process</p> <p>b) Are treatments effective?</p> <p>c) What monitoring to do and how? (e.g., CSE designs) –</p> <p>d) Spending \$ on implementation vs. monitoring</p> <p>e) Treatment designs</p> <p>f) What are the desired conditions?</p> | <p>2. Scheduled decision</p> <p>a) November 2012</p> <p>b) Start talking in January, make decision in March 2013 [possible delay – new hire]</p> <p>c) To influence Summer of 2013, Start talking in January, make decision by April 2013.</p> <p>d) tbd</p> <p>e) To influence Summer of 2014, start talking in March 2013, make decision by Oct. 2013</p> <p>f) 2018? (input from subteams: wildlife, understory, spatial heterogeneity, S&E, Upper Monument Creek (Spring 2013); will have more information by Oct. 2013)</p> |



Variables available to the LR Team for national reporting on ecological indicators

1. See Kathie & Yvette's variables
2. Peter's similar to Yvette's
3. Jenny, Jonas & Paula:
 1. Fire regime restoration
 1. CSE variables
 2. Wildlife habitat
 1. CSE variables
 2. Wildlife use list
 3. Invasive species
 1. Understory list: species richness, cover, biodiversity index, species presence



National Indicators: Invasive species

1. **Desired condition:** Prevent / minimize the spread of invasive species from treatment actions (where areas are invaded, not spread them; where not invaded, not introduce them)
2. **Species:** List from the monitoring plan (12)? Forest service invasive species list?
3. **Monitoring method:**
 1. Pre-treatment: CSE + qualitative assessment compared with invasive species maps from planning;
 2. Post-treatment: CSE + qualitative review by invasive species experts
4. **Variables:**
 1. CSE plots: post-treatment area of invaded species vs. pre-treatment area
 2. Treatments sites that are not CSE plots: post-treatment presence / absence of species on a site
5. **Analysis:**
 1. Assess the vectors that brought the weeds in to the treatment areas that were invaded (e.g., possible vectors: not washing equipment)
 2. Correlation between bare soil immediately post treatment and infestation
 3. Did the forest treat the invasive species?
6. **Questions / Next steps:**
 1. Does the CSE need to be changed?
 2. For CSE, reduce list of 12 species to 10? For expert review; expand to include entire noxious weed list?
7. **Indicator statement:** ____ (%) of the CFLR landscape area was restored by reducing invasive species severity (**preventing**, controlling, or eradicating targeted invasive species) to meet desired conditions by ____ date.
[current invasion is essentially zero %; landscape is ~3 m acres, projects are ~30k acres]
 1. Landscape scale score: Target = NA
 2. Project scale score: Target = 100% (0 additional infestation) by 2025



National Indicators: Fire Regime

1. Desired condition:

1. Landscape desired conditions:
 1. Mixed severity fires that trends towards surface fires
 2. Reduce crown fire potential at 90th percentile weather (as modeled in fire behavior models)
 3. Decreased litter and duff
 4. Decreased or similar coarse woody debris
 5. (Fire Regime Condition Class 1)?
2. Project scale desired conditions: Move percent of forests modeling at active crown fire potential from 0.5% to 0.1%; passive crown fire potential from 33.7% to 6%; surface fire potential from 62.6% to 90.7%, and no fire potential stays the same at 3.2%

2. Monitoring method:

1. Landscape modeling: Landsum
2. Project scale modeling: FVS

3. Variables:

1. CSE plots: overstory trends?
2. Treatments sites that are not CSE plots:

4. Analysis:

5. Questions / Next steps:

6. **Indicator statement:** ____ change (relative to the desired condition) occurs across ____% of the landscape area by ____ date.

1. Landscape scale score: Target =

Front Range Roundtable & LR 2013 Calendar

(Page 1 of 2)

Team	Event	Location	Location / Call Details	Date	Time
LR	LR Mtg 24	in person	USFWS offices, 134 Union Boulevard, Lakewood, 80228	Wednesday, December 12, 2012	10 -1 pm
LR	LR Mtg 25	in person	USFWS offices, 134 Union Boulevard, Lakewood, 80228	Wednesday, January 9, 2013	10 -1 pm
LR	LR Mtg 26	phone	888-858-2144, access code is: 5527423# Host adds (after access code): *6943#	Wednesday, January 23, 2013	10 - 11:30 am
LR	LR Mtg 27	in person	USFWS offices, 134 Union Boulevard, Lakewood, 80228	Wednesday, February 13, 2013	10 -1 pm
LR	LR Mtg 28	phone	888-858-2144, access code is: 5527423# Host adds (after access code): *6943#	Wednesday, February 27, 2013	10 - 11:30 am
LR	LR Mtg 29	in person	USFWS offices, 134 Union Boulevard, Lakewood, 80228	Wednesday, March 13, 2013	10 -1 pm
RT	Q1 RT Meeting	in person	USFS Regional Office, 740 Simms St. Golden, CO 80401	Friday, March 15, 2013	9:30 – 3:30
LR	LR Mtg 30	phone	888-858-2144, access code is: 5527423# Host adds (after access code): *6943#	Wednesday, March 27, 2013	10 - 11:30 am
LR	LR Mtg 31	in person	USFWS offices, 134 Union Boulevard, Lakewood, 80228	Wednesday, April 10, 2013	10 -1 pm
LR	LR Mtg 32	phone	888-858-2144, access code is: 5527423# Host adds (after access code): *6943#	Wednesday, April 24, 2013	10 - 11:30 am
LR	LR Mtg 33	in person	USFWS offices, 134 Union Boulevard, Lakewood, 80228	Wednesday, May 8, 2013	10 -1 pm
LR	LR Mtg 34	phone	888-858-2144, access code is: 5527423# Host adds (after access code): *6943#	Wednesday, May 22, 2013	10 - 11:30 am
RT	Q2 RT Meeting	in person	TBD	Friday, May 31, 2013	9:30 – 3:30
LR	LR Mtg 35	in person	USFWS offices, 134 Union Boulevard, Lakewood, 80228	Wednesday, June 12, 2013	10 -1 pm
LR	LR Mtg 36	phone	888-858-2144, access code is: 5527423# Host adds (after access code): *6943#	Wednesday, June 26, 2013	10 - 11:30 am

Front Range Roundtable & LR 2013 Calendar

(Page 2 of 2)

Team	Event	Location	Location / Call Details	Date	Time
LR	LR Mtg 37	in person	USFWS offices, 134 Union Boulevard, Lakewood, 80228	Wednesday, July 10, 2013	10 -1 pm
LR	LR Mtg 38	phone	888-858-2144, access code is: 5527423# Host adds (after access code): *6943#	Wednesday, July 24, 2013	10 - 11:30 am
LR	LR Mtg 39	in person	USFWS offices, 134 Union Boulevard, Lakewood, 80228	Wednesday, August 14, 2013	10 -1 pm
LR	LR Mtg 40	phone	888-858-2144, access code is: 5527423# Host adds (after access code): *6943#	Wednesday, August 28, 2013	10 - 11:30 am
LR	LR Mtg 41	in person	USFWS offices, 134 Union Boulevard, Lakewood, 80228	Wednesday, September 11, 2013	10 -1 pm
RT	Q3 RT Meeting	in person	TBD	Friday, September 13, 2013	9:30 – 3:30
LR	LR Mtg 42	phone	888-858-2144, access code is: 5527423# Host adds (after access code): *6943#	Wednesday, September 25, 2013	10 - 11:30 am
LR	LR Mtg 43	in person	USFWS offices, 134 Union Boulevard, Lakewood, 80228	Wednesday, October 9, 2013	10 -1 pm
LR	LR Mtg 44	phone	888-858-2144, access code is: 5527423# Host adds (after access code): *6943#	Wednesday, October 23, 2013	10 - 11:30 am
LR	LR Mtg 45	in person	USFWS offices, 134 Union Boulevard, Lakewood, 80228	Wednesday, November 13, 2013	10 -1 pm
RT	Q4 RT Meeting	in person	TBD	Friday, November 22, 2013	9:30 – 3:30
LR	LR Mtg 46	phone	888-858-2144, access code is: 5527423# Host adds (after access code): *6943#	Wednesday, November 27, 2013	10 - 11:30 am
LR	LR Mtg 47	in person	USFWS offices, 134 Union Boulevard, Lakewood, 80228	Wednesday, December 11, 2013	10 -1 pm

