

FRONT RANGE ROUNDTABLE

2011 ANNUAL REPORT

April 20, 2012



In 2011, the Front Range Roundtable continued its mission to “serve as a focal point for diverse stakeholder input into efforts to reduce wildland fire risks and improve forest health through sustained fuels treatment along the Colorado Front Range.”

The Roundtable is a coalition of about 200 individuals from state and federal agencies, local governments, environmental and conservation organizations, the academic and scientific communities, and industry and user groups, all with a commitment to forest health and fire risk mitigation along Colorado’s Front Range. The Roundtable’s focus area encompasses 10 Front Range counties: Boulder, Clear Creek, Douglas, El Paso, Gilpin, Grand, Jefferson, Larimer, Park and Teller.

In 2011, the Roundtable made progress on its mission in a number of ways:

1. After extensive literature review, research, and discussions led by the Colorado Forest Restoration Institute, the Roundtable’s Collaborative Forest Landscape Restoration Program (CFLRP) Monitoring Team published the first CFLRP Monitoring Guide for the Front Range in June 2011.¹
2. The CFLRP Monitoring Team attended field trips to discuss CFLRP treatments on the Arapaho-Roosevelt and Pike-San Isabel National Forests.
3. The Outreach and Policy Team organized a Colorado CFLRP delegation to Washington, D.C., to advocate for CFLRP in partnership with Uncompahgre Partnership.² (CFLRP received full funding from Congress for the 2012 fiscal year.)
4. The Implementation and Mapping Team selected the Western Boulder County Healthy Forest Initiative as a partner in demonstrating forest restoration and wildfire mitigation through a competitive review of candidate partner communities in priority landscapes. The team worked with the HFI to define its organization and partnership with the Roundtable.
5. The Roundtable Biomass Utilization and Slash Sites (BUSS) Team held its second annual talking point workshop during which it renewed agreement on many points and added new points of agreement on trucking weight limits on federal highways and explaining Colorado’s biomass climate.³
6. Roundtable representatives participated in forest stakeholder meeting at state Capitol in January to discuss policy proposals.
7. The Roundtable hosted approximately 20 elected officials and their staff on field trips of Fourmile Canyon Fire area in August.⁴
8. In November, the Roundtable reconvened its Science and Monitoring team after a year-long hiatus to allow members to serve on CFLRP Monitoring Team. (The SM Team will continue to serve as the CFLRP collaborative monitoring group, and has made that effort its top goal.)

¹ http://frontrangeroundtable.org/uploads/Roundtable_CFLRP_Monitoring_Plan_062511.pdf

² http://frontrangeroundtable.org/uploads/Roundtable_UP_DC_trip_briefing_091311_v6.pdf

³ http://frontrangeroundtable.org/uploads/New_2011_BUSS_Talking_Points-Draft.pdf


⁴ http://frontrangeroundtable.org/uploads/Roundtable_Fourmile_Tour_082411.pdf

9. The Roundtable Executive Team and Outreach and Policy Team launched a WUI policy effort to explore ways to move forward on the 2006 Roundtable recommendation to “change local policy to limit the growth of fire risk in the Wildland-Urban Interface.”

To implement the accomplishments above, the Roundtable convened four quarterly meetings in 2011 in March, May, August and October. During the year, 99 different people participated in at least one quarterly meeting.

In addition to the quarterly Roundtable meetings, the executive team and the four working teams held another 77 meetings and conference calls involving 89 team members focused on the team goals noted below. Since 2006, the Roundtable has worked or communicated with (via its email distribution list) 386 people from more than 91 organizations.

The Roundtable thanks all its members, guests, funders, and teams for helping the Roundtable achieve most of its 2011 goals.



Front Range Roundtable 2011 Goals

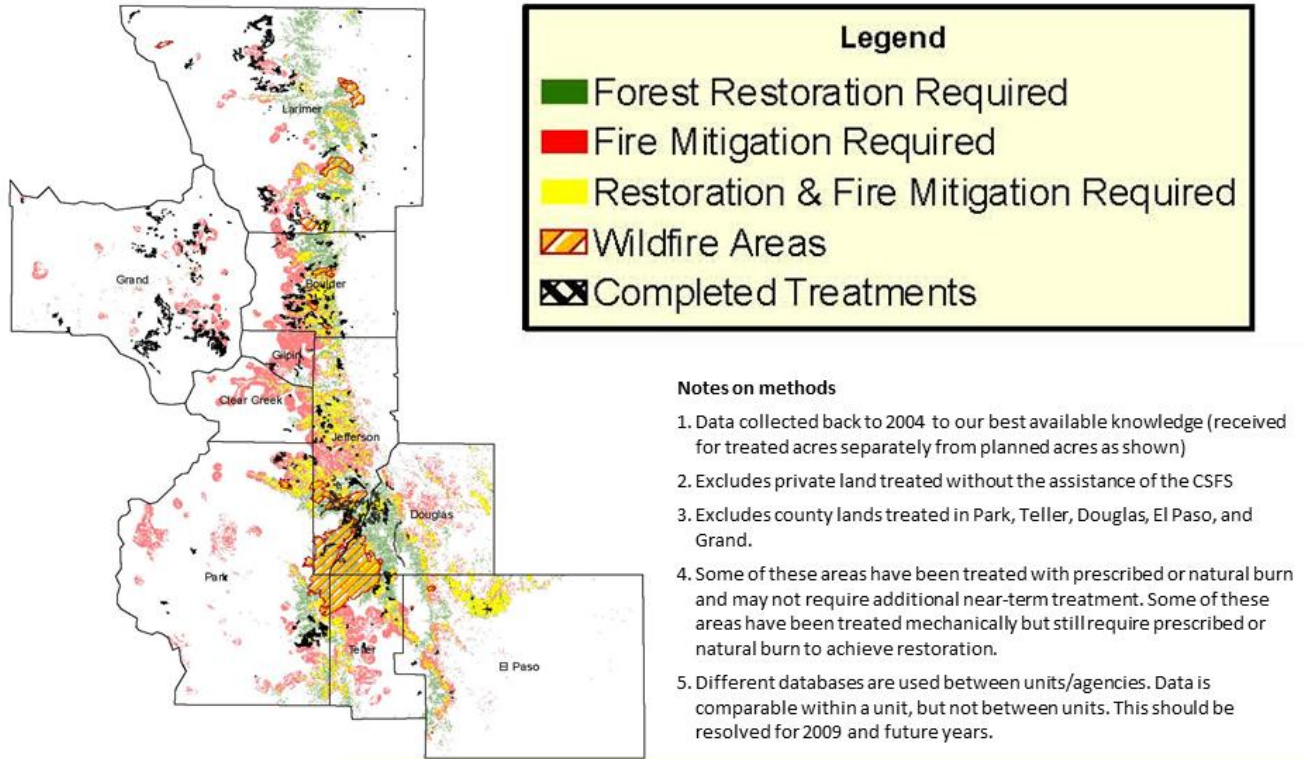
Executive Team	<ul style="list-style-type: none">• Lead in forming a coalition to recommend policy initiatives to limits fire risks in the WUI.• Lead the Roundtable to agree on a collaborative adaptive management process• Fundraise at least \$40,000
Implementation and Mapping (IM) Team	<ul style="list-style-type: none">• Select one or more communities to partner with on developing and attracting funding for a turn-key project around at least one of the highest priority landscape identified.
Outreach & Policy (OP) Team	<ul style="list-style-type: none">• Conduct outreach to elected local officials to highlight Front Range forest health and fire risk issues (including field tours, speaking engagements, and a visit by Roundtable representatives and partners to Washington D.C)
Biomass Utilization and Slash Sites (BUSS) Team	<ul style="list-style-type: none">• Share information about biomass utilization developments across the Front Range, update biomass utilization talking points at one workshop to be held during the year, and continue to track biomass status by county
Science & Monitoring Team	<ul style="list-style-type: none">• Help the Roundtable agree on target metrics for ecological restoration in the Lower Montane
CFLRP Monitoring Team	<ul style="list-style-type: none">• Develop an ecological, economic, and social monitoring plan for CLFRP grant awarded to the USFS

Contact: gall@behconsulting.com

0

Figure 1. 2011 Front Range Roundtable Team Goals

2009 Map of Priorities: Accomplishments vs. 2006 Recommendations



Source: Map by USFS-ARP

Front Range Roundtable © 2012. All rights reserved.

Figure 2. The Front Range Roundtable has identified 1.5 million acres of lower montane forest in need of restoration and/or fuels reduction.

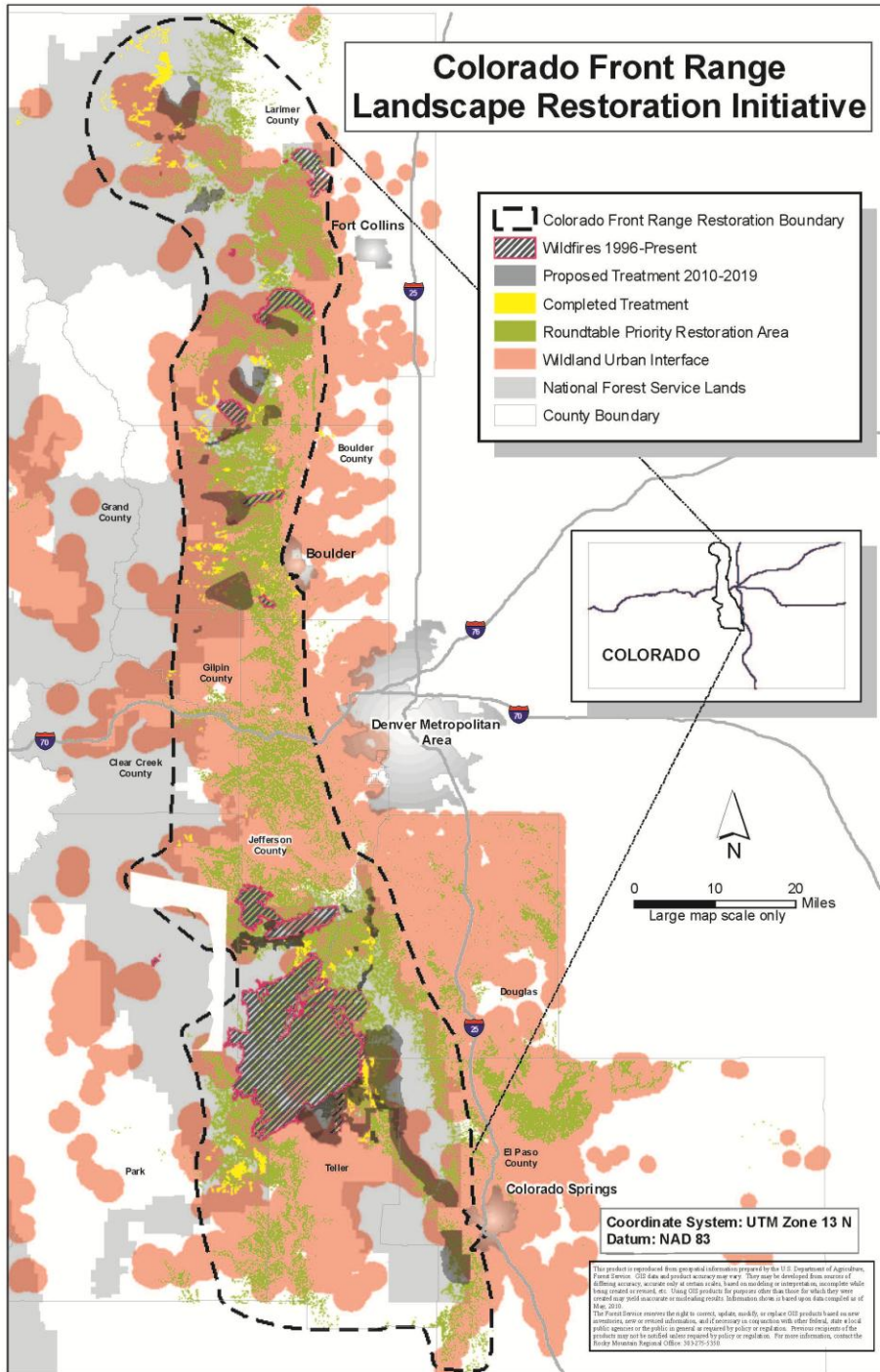


Figure 3. The Collaborative Forest Landscape Restoration Program map