



# Executive Team Meeting

Quarter 4, October 11, 2013

Facilitated by:



Front Range Roundtable

© 2013. All rights reserved.

# Today's Agenda

- **12:30 – 12:35 – Welcome, introductions**
- **12:35 – 2:00, Plan next Roundtable meeting Nov 22. :**
  - Which agenda items from the September cancelled meeting do we carry over to November? (see slide 13)
  - Upper Fountain Creek (Carol/Paige) & Lyon Buttonrock (Chad Julian)
  - UMC (Paige)
  - Report from the Missoula Fire Lab (suggested by Paige)
  - Working Team Progress Updates?
  - Next steps on 40 year vision - send questions to RT members ahead of time
- **2:00 – 2:30, Letter to DNR and CSFS:** Discuss letter to the Department of Natural Resources and the Colorado State Forest Service (and other applicable groups involved with prescribed fires). The topic is “Maintain Prescribed Fire Capacity.” (slide 8 has Roundtable input)
- **2:30 – 3:00, Housekeeping:**
  - Report on fundraising (Carol) and expenses (Gali)
  - Review remaining 2013 calendar: Roundtable & ET
  - Plan 2014 calendar
- **3:00 – 3:30: other next steps?**



# Front Range Roundtable 2013-2015 Goals

## Executive Team

1. Annually fundraise at least \$50,000
2. Plan and execute quarterly Roundtable meetings and agendas
3. Respond to letter of support requests as needed

## Community Protection (CP) Team [draft goals]

4. The community protection team will serve as a communication, networking, and information exchange among professionals working on community wildfire protection, wildfire mitigation, and private landowner education.
5. Increase stakeholder involvement in the Community Protection Team and devote one of the four larger Roundtable meetings each year to community protection issues.

## Biomass Utilization and Slash Sites (BUSS) Team

6. Share information on a monthly basis and by email about biomass utilization developments across the Front Range (via monthly calls)

## Landscape Restoration (LR) Team

7. Serve as the Front Range CFLR project multi-party monitoring group
8. Develop an adaptive management process and recommendations
9. Revise the June 2011 CFLR monitoring plan (through addendums until funding identified for a re-write)

## Wildlife Team

10. By Spring 2014, recommend a wildlife monitoring plan for the CFLRP by prioritizing an abridged list of species to monitor, hypothesizing expected post-treatment population trends for each target species, and proposing data collection and monitoring methods for each target species, with budgets

## 40 Year Treatment Plan

11. Goal still to be defined (starting with review of USFS long terms treatment plans at May 31 meeting; then possibly refine priority acres, based on feasibility [slope, access], other consideration of other forest types, such as mixed conifer)

## Prescribed Fire Initiative

12. Goal still to be defined (starting with checking in with prescribed fire council)

## Policy Initiative

13. Goal still to be defined (Community Protection team will brainstorm ideas)

## Implementation initiatives

14. Work with a community to develop a project plan and attract funding for a turn-key project in a priority landscapes
15. Update the Front Range 10-County map of completed treatments



= Top priorities

Front Range Roundtable

© 2013. All rights reserved.

= If capacity allows / in planning stages

# The Front Range Roundtable

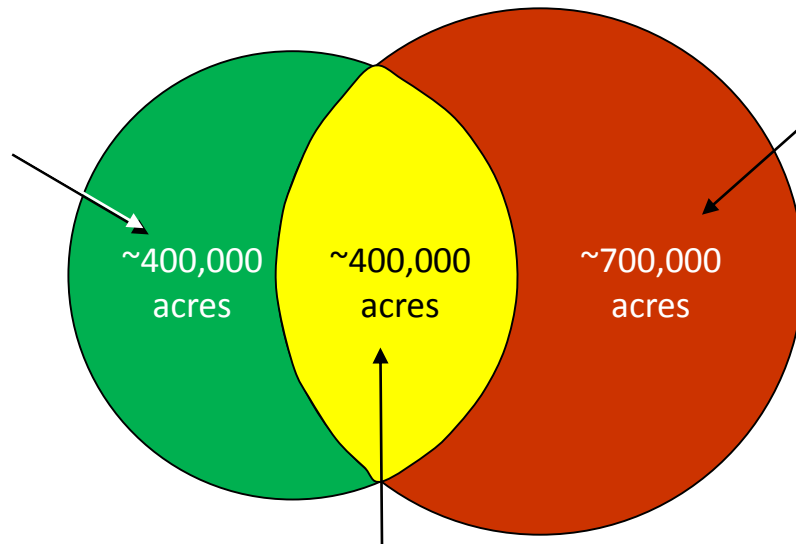
## Mission

The Front Range Roundtable was formed to “serve as a focal point for diverse stakeholder input into efforts to reduce wildland fire risks and improve forest health through sustained fuels treatment along the Colorado Front Range.”

## Vision

The Front Range roundtable has reached consensus that **1.5 million acres of Front Range forests require treatments to reduce fire risk and/or achieve ecological restoration.**

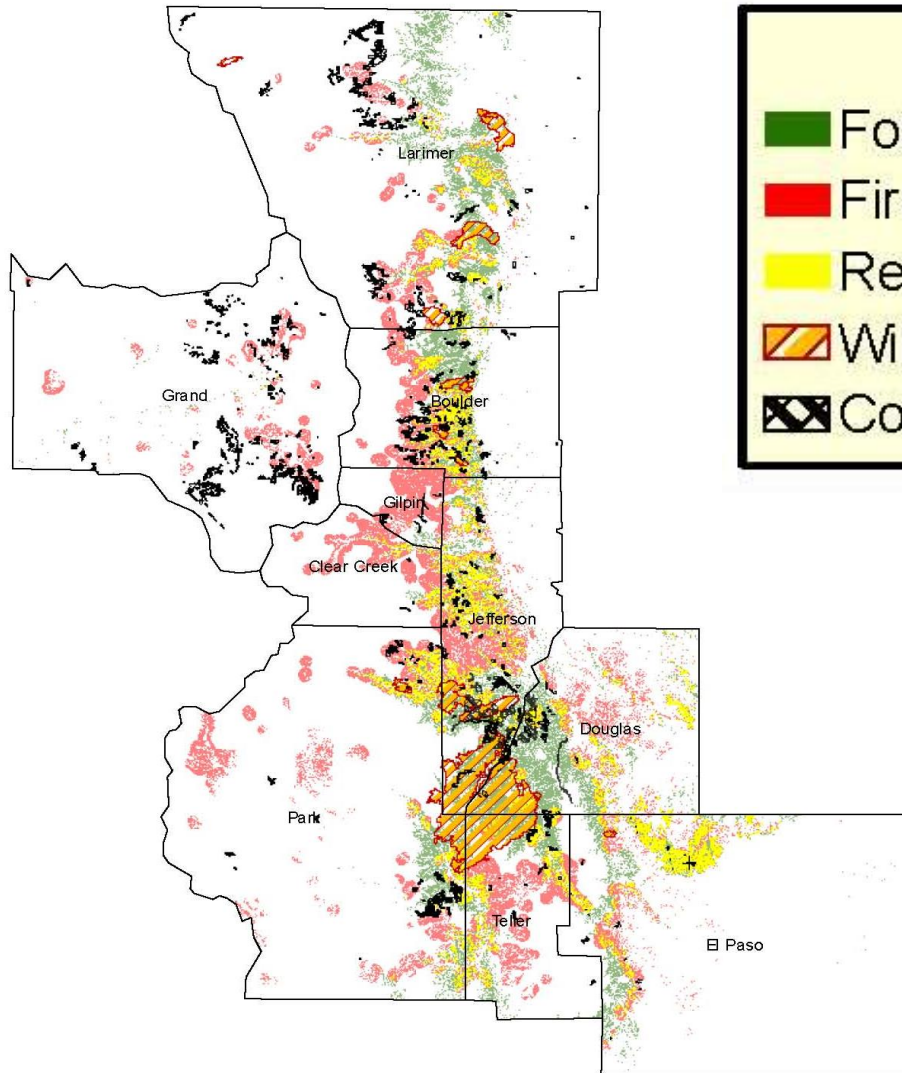
**Ecological  
Restoration  
Goals**



**Fire Risk  
Mitigation Goals**

**Overlap of goals**

# 2009 Map of Priorities: Accomplishments vs. 2006 Recommendations



## Notes on methods

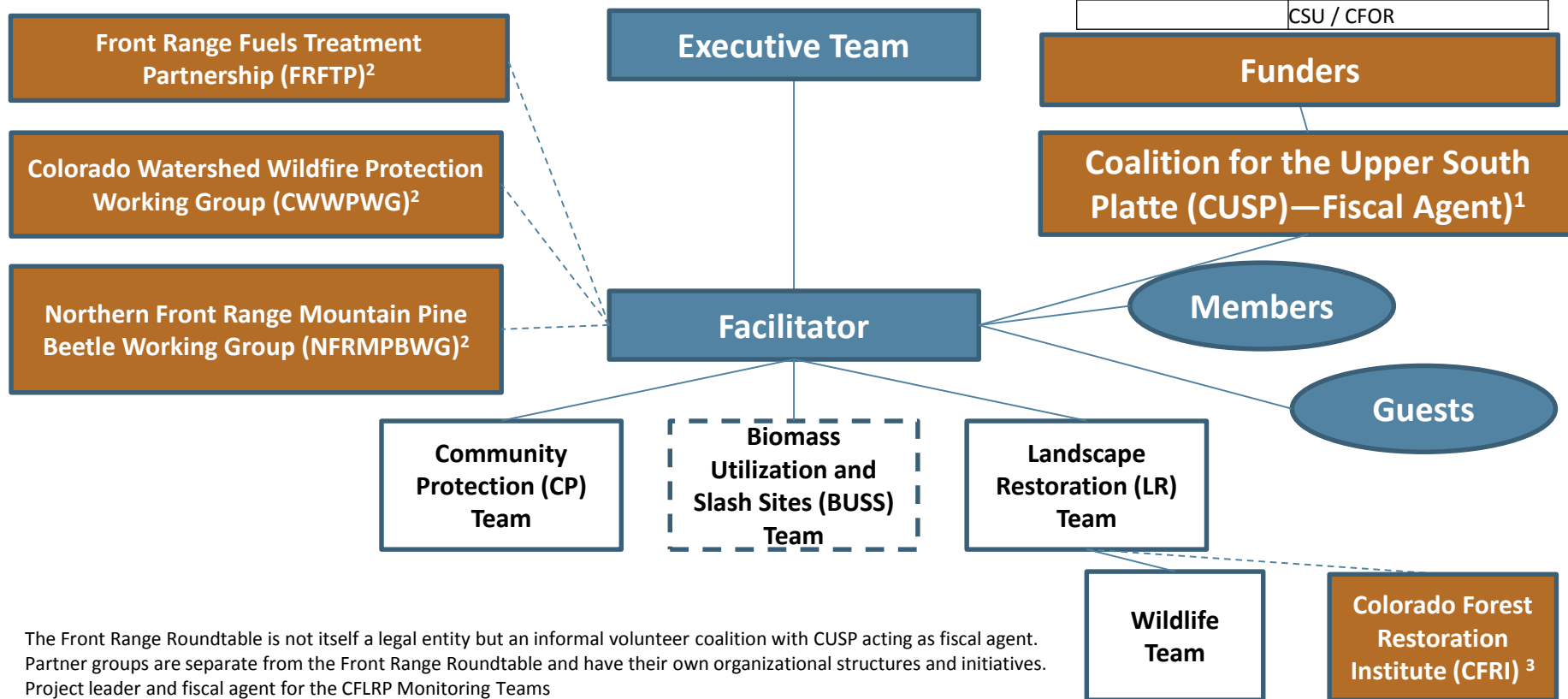
1. Data collected back to 2004 to our best available knowledge (received for treated acres separately from planned acres as shown)
2. Excludes private land treated without the assistance of the CSFS
3. Excludes county lands treated in Park, Teller, Douglas, El Paso, and Grand.
4. Some of these areas have been treated with prescribed or natural burn and may not require additional near-term treatment. Some of these areas have been treated mechanically but still require prescribed or natural burn to achieve restoration.
5. Different databases are used between units/agencies. Data is comparable within a unit, but not between units. This should be resolved for 2009 and future years.

# Roundtable Organization

- Roundtable
- Partners
- Mixed teams

Since 2006, 438 people from 150 organizations have participated in the Roundtable (210 active subscribers to email list; to join, see [www.frontrangeroundtable.org](http://www.frontrangeroundtable.org) → “Join Us”)

Boulder County	National Forest Foundation
Clear Creek County	USFS-AR
Douglas County	USFS-Pike
Gilpin County	CSFS
El Paso County	TNC
Jefferson County	West Range Reclamation
Larimer County	RMRS
Park County	Denver Water
Teller County	NRCS
	CSU / CFOR



1. The Front Range Roundtable is not itself a legal entity but an informal volunteer coalition with CUSP acting as fiscal agent.
2. Partner groups are separate from the Front Range Roundtable and have their own organizational structures and initiatives.
3. Project leader and fiscal agent for the CFLRP Monitoring Teams



# Executive Team Structure and Change Process

Size: At least 6 or no more than 9 members<sup>4</sup>

- Dedicated to certain organizations<sup>1</sup>
- Dedicated to certain stakeholder groups<sup>2</sup>
- Open to other stakeholder groups<sup>3</sup>

## Current Executive Team Membership

USFS-AR Supervisor  Glenn Casamassa	USFS-PSI Supervisor  Jerri Marr	CSFS State Forester  Mike Lester	Conserva- tion NGO  Paige Lewis, The Nature Conservancy	County Commis- sioner— North  Cindy Domenico, Boulder County	County Commis- sioner— South  Sallie Clark El Paso County	Treasurer  Carol Ekarius, Coalition for the Upper South Platte	Landscape Restoration Team Liaison  Pam Motley, West Range Reclamation	Community Protection Team Liaison  Megan Davis, Boulder County
---	--	---	--	--	--	--	--	---

### Process for changing membership:

Only when there is a change in the leadership of the organization shown

Terms end (or renew) May 2014

Term ends (or renews) Dec. 2013

Terms end (or renew) at end of June 2014

1. Three seats are dedicated permanently to these leadership positions from these organizations shown
2. Two seats are dedicated to these stakeholder groups shown with the representing organization rotating each year, as desired
3. One seat is dedicated for the fiscal agent of the Roundtable, one seat is for each of the two main working teams: the Community Protection Team and the Landscape Restoration Team. One or two seats are open to additional or other stakeholder groups with the stakeholder type and/or representing organization rotating each year as desired among: Conservation, County Commissioner, Energy, Insurance, Local Government, Planning, Private, Recreation, Science / Academic, State Government, Timber, or Water
4. Membership size can vary depending on the decisions of the Executive team and Roundtable needs / number of applicants



# Roundtable Input on Increasing Prescribed Fires

- A member suggested reviewing Air Curtain Burners for the Roundtable discussion, Unit and FFMO, Royal Gorge BLM Field Office, Pike San Isabel NF, (See PDF)
- I believe the Division of Fire Prevention and Control will be undergoing a rule-making process per last year's legislative law moving all wildfire functions out of Colorado State Forest Service to the Division addressing non-federal lands. The FRRT might want to weigh in as a group to proposals and proceedings — I am guessing many individuals belonging to the FRRT will be involved, but I'm wondering if, as a group, we want to provide input.
- Most foresters agree its not if but when these forests will burn. Why don't we pick the days they burn, when conditions are ideal, rather than waiting for Red Flag days when there is very little that humans can do to control these fires.
- I believe the best way to increase appropriate application of prescribed fire and wildland fire use as a management tool in the short term is to focus on doing everything we can to encourage communities to become fire-adapted (more thinning, better defensible space, fuelbreaks, improved access, full implementation of CWPP's, more good neighbor work on adjacent public lands). In the current situation, there are limited opportunities for "appropriate application of prescribed fire and wildand fire use" in the heavily developed Front Range.





# Next Steps from Q1-13 January 31 ET Call

- ✓ 1. The new Roundtable initiative to do “large scale planning for future treatments to meet the Roundtable’s 40 year vision:” **Glenn** and **Jeri** will speak to their respective staffs about pulling together the USFS’s long term treatment plans to share with the Roundtable at the May 31 meeting, as a starting point to collaboratively developing a long term treatment plan.
- ✓ 2. The new Roundtable initiative to “increase social acceptance of smoke management and prescribed fire:” **Megan** will bring this topic to the Community Protection Team to see if that team’s work can address this issue. 5/9 update: Group discussed it, but didn’t want to take it on as a team initiative
- ⊙ 3. The new Roundtable initiative to “support policies that stabilize funding at adequate levels to meet management objectives:” The ET did not see a clear role for the Roundtable on this effort other than federal legislative outreach (e.g., DC trips) and supporting ad hoc outreach efforts of local counties and municipalities. **The ET agreed to bring this question back to the Roundtable about what the counties and local gov’ts would like to see the Roundtable actively do.**
4. The next quarterly Roundtable meeting:
  - ✓ 1. **Glenn** is helping Gali confirm Dan Jiron’s timing (10:30am – 12pm) and a location for 3/8 (we are still having trouble finding a room big enough but have feelers out to two more locations – please let us know if you have other suggestions than USFS RO and Jeffco, which are both booked)
  - ✓ 2. Tony Cheng recommended a guest speaker—Dr. Susan McCaffrey—to speak about social science aspects of forest restoration and treatments; the ET decided to expand this topic into a panel and **Terra** will work with Tony to invite Dr. McCaffrey and authors from another social science study that Glenn recommended (Public Perceptions of the Mountain Pine Beetle in Three Study Areas in Northern Colorado and Southern Wyoming, see documents below)
  - ✓ 3. **Gali** will send a draft agenda to the ET after the other potential speakers are confirmed. In addition to speakers, the agenda will allow plenty of time for debriefing from the 11/30/12 meeting when the Roundtable prioritized 3 new long-term initiatives. We will break into groups and also discuss in plenary how to proceed on each initiative.
- ✓ 5. The Colorado Collaboration Award: **Carol** and **Megan** will look into possibly applying for this grant, with the support of a CUSP staff member, Helen Dyer. 5/9 update: no MOU was an issue



= Completed



= On track

Front Range Roundtable



= Needs attention



= Deferred

# Next Steps from Q1-13 March 8 Roundtable Meeting

1. **John Ring:** Help on the teacher training / outreach initiative led by Shawna Crocker
2. **Carol Ekarius:** Work with Mike McHugh to plan two summer field trips for elected officials to Waldo and High Park fire sites (Shawna Crocker offered to coordinate using CSU's vans which can seat 12 passengers each); 5/9 update: just for elected officials, not as part of the RT mtg; 7/23: Mike selecting date in late August; tour sites already selected; look into CSU's or Boulder County vans for transportation, otherwise, rent a bus
3. **Peter Brown:** Look into planning a science / education symposium, perhaps in partnership with the Colorado Forest Collaboratives group led by Lisa Dale, perhaps in partnership with the CFLR Coalition or the NFF's CFLR webinars. Activities may include: writing a letter to CFRI and others to coordinate a science synthesis; 5/9 update:
4. **Rob Addington:** Work with Mike Babler to speak with the state Prescribed Fire Council to get ideas about the Roundtable can participate in promoting the increased use of prescribed fire
5. **Hal Gibbs:**
  1. Work with Mark Martin & Craig Jones on thinking through the future of the BUSS team (biomass utilization and slash site); ask Mike Smith how the Roundtable can best stay up to date on biomass utilization opportunities, challenges, progress and needs
  2. Work with data providers and a GIS expert on updating the 2009 Roundtable map of where forest treatments have taken place, in relation to where the Roundtable recommended that forests be treated for forest restoration and/or fire risk mitigation



= Completed



= On track

Front Range Roundtable

© 2013. All rights reserved.



= Needs attention



= Deferred

# Next Steps from Q2-13 May 31 Roundtable Meeting

## 1. **Gali Beh:** Facilitate the Executive Team to:

- ✓ a. Plan the agenda for the Quarter 3 Roundtable meeting. Several agenda items were suggested at the Q2-13 Roundtable meeting:
  - a. Report on UMC project by Paige
  - b. Present biomass legislation issues by Rob Davis
  - c. Report from the Missoula Fire Lab (suggested by Paige)
- ✓ b. Write a letter to the Department of Natural Resources and the Colorado State Forest Service (and other applicable groups involved with prescribed fires). The topic is “Maintain Prescribed Fire Capacity.” Send points to Terra and she can craft the letter. 7/23: happy to have the conversation we had on 5/31, look forward to working with multiple agencies on PF in the future; this is a priority for the RT; or maybe also draft a rulemaking to the DPS; recommend that CSFS staff with PF capacity be allowed to participate in non-state lands PF; send letter to RT members to seek who is interested in signing on to letter, do letter as private / outside of the RT, so it doesn't have to be watered down

## 2. **Megan Davis:** Send Boulder County's mountain landowner information (aerial maps) to the Roundtable

## 3. **Trey Schille:** Send Roadless Rule information and link to GIS data to the Roundtable

## 4. **Paige Lewis:** Look into news article about Lyle Laverty regarding the CFLRP project litigated

## 5. **Terra Lenihan:**

- ✓ a. Send BUSS team members to Craig Jones
- ✓ b. Ask Karl Kumli (Bennet's office) and Andrew Notbohm (Boulder County FPD) if they'd like to join the Roundtable (they attended Q2-13; Notbohm was previously a member with Colo Spgs FPD)
- ✓ c. Find a location for the Quarter 3 Roundtable meeting (waiting to here from Jenny Briggs on the USGS location)

## 6. **Lisa Dale:** Let the Roundtable know who is serving on the Wildfires Review Committee (when known) (Lisa emailed in June that they committee hasn't been formed yet; she'll let us know when it is)

## 7. **Mark Martin:** overlay the Roadless Rule Boundary onto the 2009 map of the Roundtable priority treatment areas



✓ = Completed

○ = On track

Front Range Roundtable

○ = Needs attention

○ = Deferred

# Next Steps from Q3-13 July 23 Executive Team Meeting

## 1. “40 year vision” initiative:

- 1. Add new roadless rule boundaries (Mark M)
- 2. Update 2009 implementation map (Hal G)
- 3. November RT meeting agenda
  - 1. Develop 5 year vision for now? 10 years priority acres?
  - 2. Revisit original report? – rethink mixed conifer, discuss lodgepole again?

Red = move to 10/11 slide

## 2. Carol

- 1. Assign Jon to lead fire adapted communities panel at the 9/13 RT meeting
- 2. Lead insurance report discussion
- 3. Invite new CUSP CPA, Adam Newburn, to next ET meeting (not ready to join yet, but will soon)
- 4. Ask staff to send Megan invoices for counties that have not paid
- 5. Ask West Range Reclamation to contribute
- 6. Let gali know outcome of work plan discussion and next steps for contracting

## 3. Megan:

- 1. Designate lead for CPT presentation
- 2. Confirm that Cindy will stay through May 2014
- 3. Work with Cindy to send outstanding invoices to County – Jefferson only one left

## 4. Paige:

- 1. Check in with Rob Davis on leading biomass policy agenda item
- 2. With Carol, lead letter on prescribed fire

## 5. Terra

- 1. Create agenda, location doc – send agenda to ET to confirm
- 2. Send save the date
- 3. Send RT request for people who want to participate in letter on prescribed fire (see slide 8)
- 4. Add [Adam@uppersouthplatte.org](mailto:Adam@uppersouthplatte.org) to ET list
- 5. Move ET meeting to 10/11, find room, confirm with Glenn & Sallie



= Completed



= On track

Front Range Roundtable



= Needs attention



= Deferred

# Next Steps from Q4-13 Oct. 11 Executive Team Meeting

- Sallie:

- 1. Reach out to Larimer County to see if we can get attendance on 11/22

- Carol

- 1. Confirm Jonathan to lead/recruit CP panel
- 2. Recruit speakers for Insurance Task Force discussion 11/22; ask Kelly from insurance, Scott Woods, Kevin Klein (OEM)
- 3. Follow up with Cindy to ask her to fundraise from Jefferson County
- 4. Ask Greeley Water to donate (refer to Sallie in “ask”)
- 5. Hold call with Paige re: Funding and also JSFP funding/RFP – report to RT in Nov on research opportunity to find out how past fires contributed to recent flooding.
- 6. Resend letter extending contract to Gali.

- Paige

- 1. Confirm Rob/Mike for Biomass panel
- 2. Lead and recruit speakers for policy/legislative panel 11/22. Include information on flood insurance and what’s going on at national policy level.
- 3. Talk to Carol regarding funding as well as fires/flooding/flood insurance.

- Terra:

- 1. schedule call with Lisa Dale for early November (Paige, Carol, Gali, Lisa) to discuss state moratorium on broadcast fire – invite other ET members after we select date; may want to talk Paul Cook (DFPC – fire prev and control) after Lisa; bring results of this call to RT mtg 11/22 as part of prescribed fire discussion; wait until after 11/22 to write letter
- 2. Create 11/22 agenda, location doc – send agenda to ET to confirm first, then Roundtable
- 3. Send save the date for 11/22
- 4. Confirm all logistics for 11/22
- 5. Confirm CFLR speakers for 11/22
- 6. Ask Lynne and Rick to attend next LR meeting to integrate CFLR comments
- 7. Check with Megan – CP Team update at 11/22 meeting
- 8. RSVP paige, Pam, Mike, Carol, Sallie to 11/22
- 9. Propose 2 Fridays for each month that we would meet: (Sallie – can’t do 2/3d Fri each month – check CCI calendar – ccionline.org)
  - 1. ET: Jan/Apr/July/Oct (early in the month – except for CCI conflict dates: 3<sup>rd</sup> or 4<sup>th</sup> )
  - 2. RT: Feb/May/Sept (early)/Nov (late)



= Completed



= On track

Front Range Roundtable



= Needs attention



= Deferred

# Preliminary Agenda for November 22

## Roundtable Meeting

### November 22 Agenda:

Topic	Sub-topic	Timing	Duration
Opening: Check-in, social, and networking time		9:00	0:30
Welcome: Introductions, announcements, about the Front Range Roundtable		9:30	0:30
Partner Updates		10:00	0:15
Debrief from Landscape Restoration Team's CFLR Monitoring Field Trips held in July – give feedback to the USFS on assessment of restoration implementation	Sara, Hal, Peter (Terra): Hal & Jeff should also give overview of what we saw for people who were not there; LR team should meet in August to develop consensus recommendations, select photos to show Roundtable ; Work with wildlife team to share feedback with LR team and integrate (Terra)	10:15	1:00
Strategic Planning on 3 New Long Term Initiatives:	Next steps on 40 year vision - send questions to RT members ahead of time Further plan other two initiatives - next steps on prescribed fire -- 10 minutes Brainstorm ideas for new Roundtable initiative to “support policies that stabilize funding at adequate levels to meet management objectives” (bumped from May agenda)	11:15	0:30
Lunch (break)		11:45	0:30
Community Protection focus / panel discussion:	Fire adapted communities: Lead: Jonathan Bruno (Carol to assign) , others TBD, Lisa Mason, CSFS, National effort?; what is fire adapted community program at nat'l level, what is the CSFS doing as state-wide lead, what is happening locally, e.g., CUSP; ask Tony Cheng to work with Jon on his piece) - 45 minutes (Carol to confirm with Jonathan) CPT update - Megan (15 minutes) (Terra to cofirm) Insurance task force report (final report out) - Carol to lead panel/discussion and recruit all speakers; ask Kelly from insurance, Scott Woods, Kevin Klein (OEM), (30 minutes) Policy and legislation discussion to plan for next state legislature session (including flood insurance), Paige (30 min); Paige to check with Sally before meeting for update on flood); discuss how RT members want to be notified of leg issues between meetings	12:15	2:00
Break		2:15	0:05
Present biomass legislation issues	Rob Davis & Mike Eckhoff (Paige to confirm)	2:20	0:45
Housekeeping	Fundraising (Carol and Paige to plan update; ask Cindy @ Jefferson) Contractor expenses to date and work plan for coming year Calendar	3:05	0:20
Wrap-Up: Next steps, 2013 calendar, and thanks		3:25	0:10
Closing: Clean up, social, and networking time		3:30	
Total (should be 6 hours)			6:00
Jan 2014 agenda?	Upper Fountain Creek (Carol/Paige) & Lyon Buttonrock (Chad Julian) UIMC (Paige)		

# Fundraising Update

Income				Expenses	
Entity	Requested	Received	Approved Agreement	Item	
Aurora Water	\$1,000.00	\$1,000.00		Contractor expense to date	14,700.32
BLM	\$500.00			Non-personnel (shipping, copying)	17.43
Boulder County	\$2,500.00	\$2,500.00		Total	14717.75
Clear Creek County	\$1,000.00	\$1,000.00			
Colo Mtn Club	\$500.00				
Colo State Forest Svc	\$5,000.00	\$5,000.00			
Colo Spgs Utilities	\$1,000.00	\$1,000.00			
CTIA	\$200.00			CUSP INKIND Contribution	
Denver Water	\$2,500.00	\$2,500.00		Staff Expenses	3141.28
DNR	\$200.00				
Douglas County	\$2,500.00	\$2,500.00			
El Paso County	\$2,500.00				
Environ Energy Partners	\$200.00				
Forest Energy Colorado	\$500.00				
Gilpin County	\$250.00	\$250 thru ARP			
Grand County	\$1,000.00				
Jefferson County	\$2,500.00				
Larimer County	\$500.00				
Park County	\$1,000.00	\$1,000.00			
Southern Rockies Con Alliance	\$500.00				
Teller County	\$1,000.00	\$1,000.00			
TNC	\$3,181.43	\$3,181.43			
USFWS	\$2,999.00	\$2,999.00			
USFS--Including RMRS	\$20,965.00		\$20,965.00		
Total	\$53,995.43	\$23,930.43	\$20,965.00		



# Budget Update and Planning

- Previous year's expenses (July 2011 – June 2012): \$52.5k
  - Includes NFF funding: \$2.7k
- Last year's fees and expenses (July 2012 – June 2013): ~\$30k
  - Includes NFF funding: \$6.4k
  - Includes CSU funding: \$5k
  - Other Roundtable member funding: \$18.6k
- This year's budget for fees and expenses (July 2013 – June 2014): **TBD**
  - No outside funding (NFF or CSU) as of June 2013
  - Expenses from July to September 2013: \$8,596.25 → annualized estimate: ~\$35k

Month-year	Full name	Role	Sum of Total Time	Average of Billing rate	Sum of Total billing
2013, 07. July	Gali Beh	Principal	39:15	\$55.00	\$2,158.75
	Terra Lenihan	Associate	63:15	\$40.00	\$2,530.00
2013, 07. July Total			102:30	\$47.14	\$4,688.75
2013, 08. August	Gali Beh	Principal	19:00	\$55.00	\$1,045.00
	Terra Lenihan	Associate	34:00	\$40.00	\$1,360.00
2013, 08. August Total			53:00	\$48.04	\$2,405.00
2013, 09. September	Gali Beh	Principal	3:30	\$55.00	\$192.50
	Terra Lenihan	Associate	32:45	\$40.00	\$1,310.00
2013, 09. September Total			36:15	\$45.89	\$1,502.50
Grand Total			191:45	\$47.04	\$8,596.25

