



Executive Team Meeting

Quarter 4, September 26, 2014

GoTo Meeting

Facilitated by:



Front Range Roundtable

© 2014. All rights reserved.

Today's Agenda

- **9:30 -- 9:45: Welcome, introductions/ice breaker, Welcome Chuck if he is able to attend**
- **9:45 – 10:00: About the Roundtable**
- **10:00 – 10:15: Update on working teams:**
 - Will we provide coordination / project management support to the new Roundtable Vision & Recommendations Team,” the BUSS team(Mike Eckhoff, Andi Perri) , and continue to support the Wildlife Team in Phase II?
 - National Indicators (LR team)
- **10:15 – 11:00: Plan next Roundtable meeting:**
 - Location in Denver?
 - Agenda items
- **11:00 – 11:15: Letters of Support for Community Groups**
- **Issues to resolve:**
 1. How we govern ourselves and make decisions re: adaptive mgmt process (maybe best worked out at LR team with rec's to the Roundtable– have only discussed it in context of CFLRP)
- **11:15 – 12:00: Housekeeping:**
 - Review open action items from prior ET and RT meetings
 - Report on fundraising (Carol) and expenses (Gali)
 - Plan remaining 2014 calendar and 2015 calendar: Roundtable & ET

Terra: add
how to a

Terra: add
time for c



Today's Agenda

- **9:30 -- 9:45: Welcome, introductions/ice breaker, Welcome Chuck if he is able to attend**
- **9:45 – 10:00: About the Roundtable**
- **10:00 – 10:15: Update on working teams:**
 - Will we provide coordination / project management support to the "Recommendations Team," the BUSS team (Mike Eckhoff, Andi Perri) and the Wildlife Team in Phase II?
 - National Indicators (LR team)
- **10:15 – 11:00: Plan next Roundtable meeting:**
 - Location in Denver?
 - Agenda items
- **11:00 – 11:15: Letters of Support for Community Groups**
- **Issues**
- **11:15 – 12:00: Housekeeping:**
 - Review open action items from prior ET and RT meetings
 - Report on fundraising (Carol) and expenses (Gali)
 - Plan remaining 2014 calendar and 2015 calendar: Roundtable & ET

1. Small team working
2. Share rec's on
incorpor
3. Share pre-read with
4. Hold special meeting
10/24 – 11/5 (work
5. Submit resu
6. Region submits

Nex

1. Terra: nag small
needed, notify sm
reads for LR tea
n
2. Notify



Executive Team Structure and Change Process

Size: At least 6 or no more than **11** members⁴

- Dedicated to certain organizations¹
- Dedicated to certain stakeholder groups²
- Dedicated to members based on Roundtable roles³

Current Executive Team Membership

USFS-AR Supervisor Glenn Casamassa / (Ron Archuleta Acting through 8/15)	USFS-PSI Supervisor Erin Connelly	CSFS State Forester Mike Lester	Conservation NGO Paige Lewis, The Nature Conservancy	County Commissioner – Northern Front Range Cindy Domenico, Boulder County	County Commissioner – Southern Front Range Sallie Clark El Paso County	Forest Industry Chuck Dennis, West Range Reclamation	Treasurer Carol Ekarius, Coalition for the Upper South Platte	Landscape Restoration Team Liaison Greg Aplet, The Wilderness Society	Community Protection Team Liaison Megan Davis, Boulder County
Process for changing membership: Only when there is a change in the leadership of the organization shown			Terms end (or renew) May 2015	Term ends (or renews) Dec 2014	Term ends (or renews) Sept 2015	Terms end (or renew) at end of June 2015			

1. Three seats are dedicated permanently to these leadership positions from these organizations shown
2. Four seats are dedicated to the stakeholder groups shown with specific representation changing each year, as desired
3. One seat is dedicated for the fiscal agent of the Roundtable, one seat is for each of the two main working teams: the Community Protection Team and the Landscape Restoration Team.
4. Membership size can vary depending on the decisions of the Executive team and Roundtable needs / number of applicants. **Also currently recruiting someone from emergency management. Considering (but not seeking) representatives from Academia and Wildlife (back burner for now)**

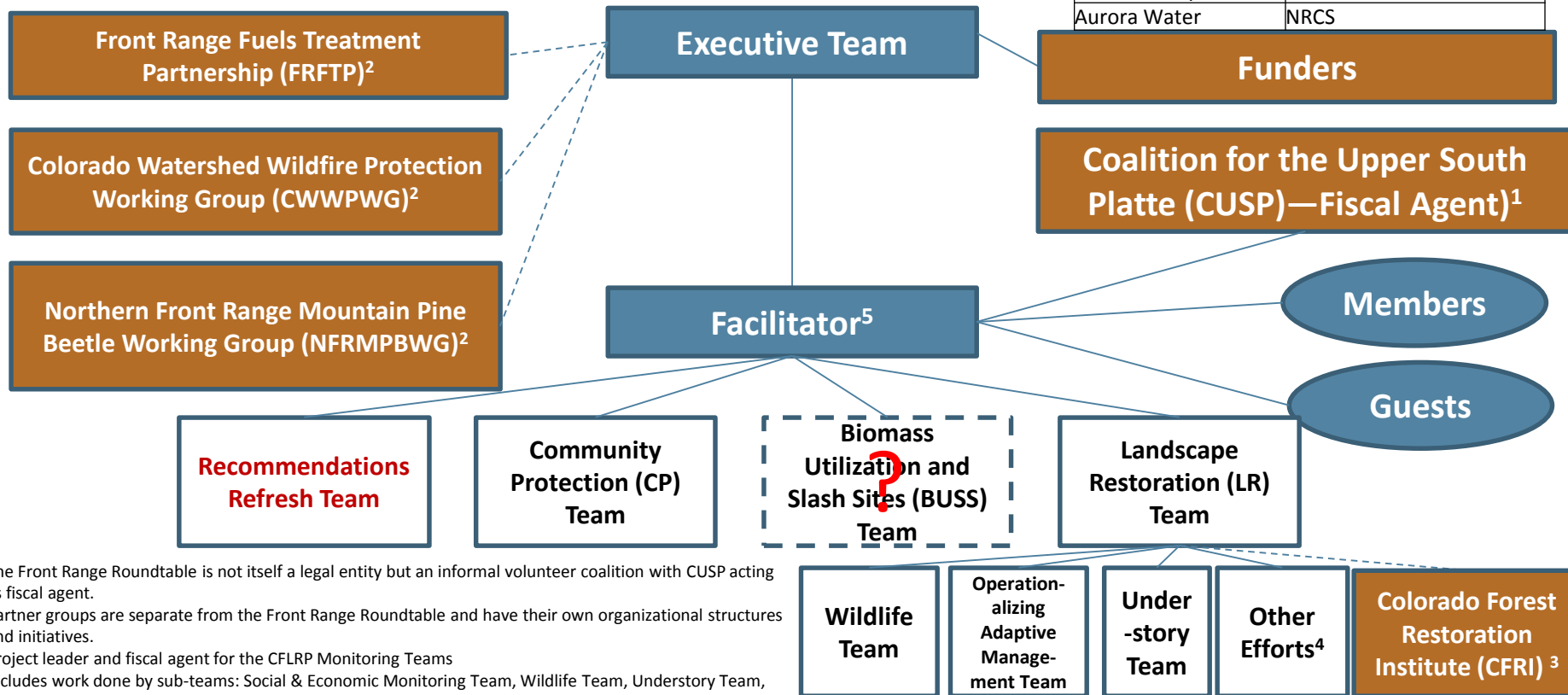


Roundtable Organization

- Roundtable
- Partners
- Mixed teams

Since 2006, 590 people from 175 organizations have participated in the Roundtable (226 active subscribers to email list; to join, see www.frontrangeroundtable.org → “Join Us”)

Boulder County	National Forest Foundation
Clear Creek County	USFS-AR
Douglas County	USFS-Pike
Gilpin County	CSFS
El Paso County	CSU/CFRI
Jefferson County	TNC
Larimer County	West Range Reclamation
Park County	RMRS
Teller County	Denver Water
Aurora Water	NRCS



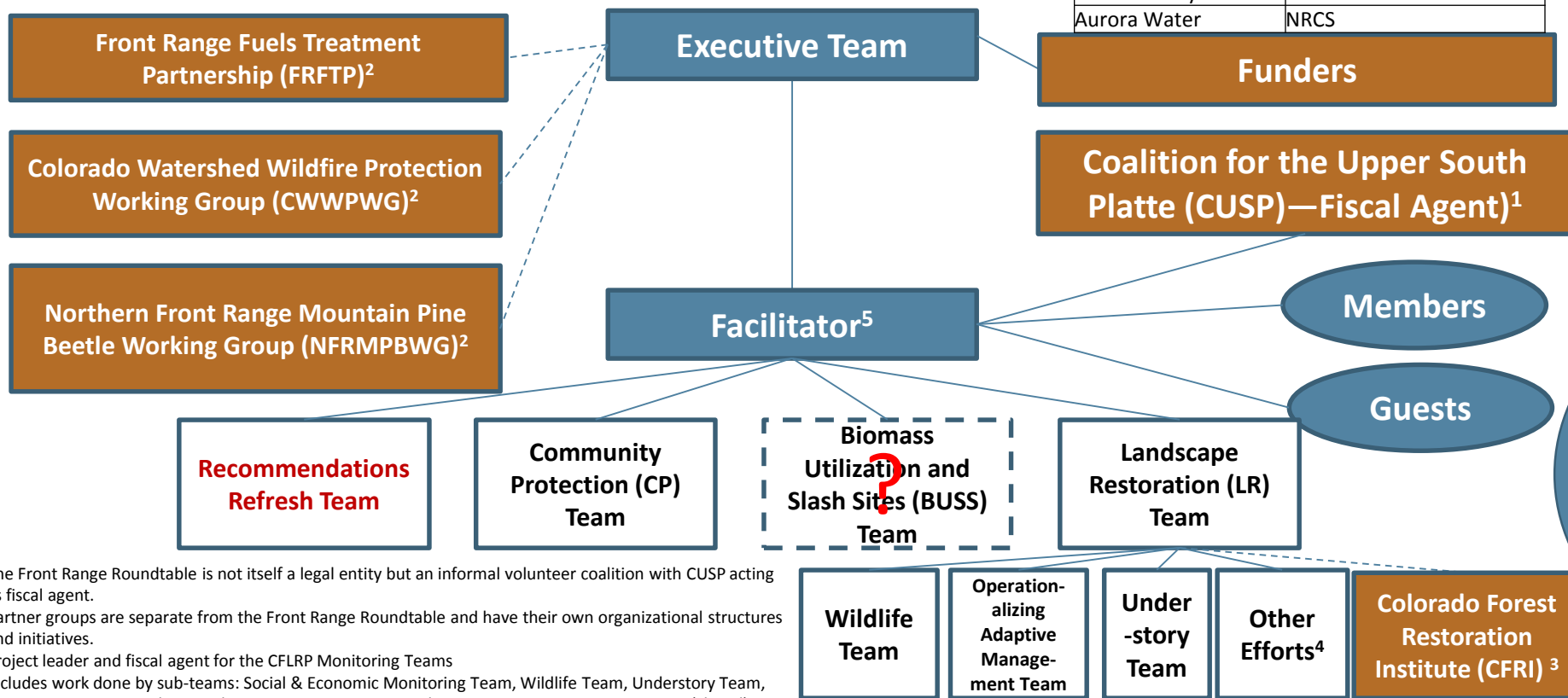
1. The Front Range Roundtable is not itself a legal entity but an informal volunteer coalition with CUSP acting as fiscal agent.
2. Partner groups are separate from the Front Range Roundtable and have their own organizational structures and initiatives.
3. Project leader and fiscal agent for the CFLRP Monitoring Teams
4. Includes work done by sub-teams: Social & Economic Monitoring Team, Wildlife Team, Understory Team, Upper Monument Creek; Spatial Heterogeneity Team; Stand Reconstruction Team; Monitoring (closed); Operationalizing Adaptive Management Team; GTR Team; AR South Zone project
5. Facilitation support provided to Roundtable overall, the Executive Team, the LR Team and the Wildlife Team

Roundtable Organization

- Roundtable
- Partners
- Mixed teams

Since 2006, 590 people from 175 organizations have participated in the Roundtable (226 active subscribers to email list; to join, see www.frontrangeroundtable.org → “Join Us”)

Boulder County	National Forest Foundation
Clear Creek County	USFS-AR
Douglas County	USFS-Pike
Gilpin County	CSFS
El Paso County	CSU/CFRI
Jefferson County	TNC
Larimer County	West Range Reclamation
Park County	RMRS
Teller County	Denver Water
Aurora Water	NRCS



1. The Front Range Roundtable is not itself a legal entity but an informal volunteer coalition with CUSP acting as fiscal agent.
2. Partner groups are separate from the Front Range Roundtable and have their own organizational structures and initiatives.
3. Project leader and fiscal agent for the CFLRP Monitoring Teams
4. Includes work done by sub-teams: Social & Economic Monitoring Team, Wildlife Team, Understory Team, Upper Monument Creek; Spatial Heterogeneity Team; Stand Reconstruction Team; Monitoring (closed); Operationalizing Adaptive Management Team; GTR Team; AR South Zone project
5. Facilitation support provided to Roundtable overall, the Executive Team, the LR Team and the Wildlife Team

Front Range Roundtable 2013-2015 Goals

Executive Team

1. Annually fundraise at least \$50,000
2. Plan and execute quarterly Roundtable meetings and agendas
3. Respond to letter of support requests as needed

Community Protection (CP) Team [draft goals]

4. The community protection team will serve as a communication, networking, and information exchange among professionals working on community wildfire protection, wildfire mitigation, and private landowner education.
5. Increase stakeholder involvement in the Community Protection Team and devote one of the four larger Roundtable meetings each year to community protection issues.

Landscape Restoration (LR) Team

1. Gather, analyze, and evaluate CFLR monitoring data in order to report to the Roundtable and Congress on whether forest treatments are trending towards desired conditions.
2. Gather, analyze, and evaluate new science and research methods to refine definitions of desired conditions
3. Implement Upper Monument Creek project as a model for collaborative forest treatment planning and implementation; identify similar opportunities for collaborative implementation planning on the AR

Wildlife Team

10. By Spring 2014, recommend a wildlife monitoring plan for the CFLRP by prioritizing an abridged list of species to monitor, hypothesizing expected post-treatment population trends for each target species, and proposing data collection and monitoring methods for each target species, with budgets

Roundtable Vision and Recommendations Team

11. Refine treatment priorities: Goal still to be defined pending organizing meeting of the new sub-team tasked with this initiative.
12. Update the Front Range 10-County map of completed treatments

Prescribed Fire Initiative



12. Goal still to be defined (starting with checking in with prescribed fire council)

Policy Initiative



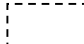
13. Goal still to be defined (Community Protection team will brainstorm ideas)



 = Top priorities

Front Range Roundtable

© 2014. All rights reserved.

 = If capacity allows / in planning stages

Proposed 2015 Calendar

Meeting	Possible Dates	Selected Dates	Location
Q1 Executive Team Meeting (<i>could be Dec 14</i>)	12/5/14, 12/12/14, 1/9, 1/16 (Friday before MLK weekend), 1/23, 1/30, 2/6 (out for CK & GA), 2/13 (out for Gali, also Fri before Pres day), 2/20, 2/27 (Erin tentative out), 3/6 (out for CK & GA), 3/13, 3/20 (prefer out for Gali or AM call only), (3/27 out for Gali)	12/5/14	In person , Denver, 12:30 – 3:30
Q1 Roundtable Meeting		2/20 – top choice for now	Colorado Springs
Q2 Executive Team Meeting	4/3 (prefer out for Gali), 4/10 (out for Gali), 4/17, 4/24, 5/1 (out for CK & GA), 5/8, 5/15, 5/22 (Friday before Memorial day), 5/29, 6/5, 6/12, 6/19, 6/26	3/20	Virtual - 9:30 – 12pm
Q2 Roundtable Meeting		5/15 – top choice for now 5/29	Denver
Q3 Executive Team Meeting	7/10 (Carol out), 7/17, 7/24, 7/31, 8/7 (out for CK & GA), 8/14, 8/21, 8/28, 9/11, 9/18, 9/25	6/26	In person, Denver 12:30 – 3:30
Q3 Roundtable Meeting		8/28 – top choice	Longmont
Q4 Executive Team Meeting	10/2 (out for CK & GA), 10/9, 10/16, 10/23, 10/30, 11/6 (out for CK & GA), 11/13, 11/20, 12/4 (out for CK & GA), 12/11, 12/18	9/25	Virtual
Q4 Roundtable Meeting		11/13 – top choice	Denver

2015 Weekday Holidays: 1/1-New Years Day, 1/19-MLK Day, 2/16-President's Day, 5/25-Memorial Day, 7/3-Independence Day observed, 9/7-Labor Day, 10/12-Columbus Day, 11/11-Veteran's Day, 11/26-Thanksgiving, 12/25-Christmas



Roundtable Policy on Letters of Support for Communities

When we may support:

1. Community is in the Roundtable priority area
2. Community provides a letter to Roundtable about the goals of the project
3. Community has a CWPP specific to the community?

When we may not support:

1. When executive team members serve on the grant review committee? – recuse?

Notes:

1. Our letter needs to clarify that we will not support one community over another in local grants when multiple communities from the Front Range counties are competing
2. Next steps:
 1. Create a form on the website that applicants have to fill out when they request letters of support (optional for them to also submit their application):
 1. How does your project fit the goals of the Front Range Roundtable?
 2. Is the community in the Front Range Roundtable prioritized area?
 3. Forested?
 4. We need 3 weeks notice



Front Range Roundtable Roles

Executive Team

1. Propose strategic, organizational, and operational priorities for the Roundtable's consideration at Quarterly meetings
2. In between Quarterly meetings, make decisions on behalf of the Roundtable as needed
3. Approve agendas for Roundtable Quarterly meetings (proposed by Facilitator)
4. Meet once each quarter between Quarterly Roundtable meetings
5. Provide letters of support for regional programs in grant applications (but not to individual communities, which may be competing within the Front Range); provide our recommendations and funding criteria to major grantors on an annual basis

Facilitator

1. Schedule, arrange, and facilitate Roundtable Quarterly meetings, Executive Team meetings, and some working team meetings (where the Executive Team has decided to provide that level of support to working teams)
2. Support select working teams (at discretion of the Executive Team) in achieving their goals by providing organizational, administrative, and logistical support (e.g., keeping work plans) —not content or legwork
3. Act as the central point of contact for all Roundtable internal and external communications (e.g., email distribution list, website maintenance)

Working Teams

1. Execute on the Roundtable's strategic goals, according to work plans developed jointly by the teams
2. Present progress updates at Quarterly Roundtable meetings
3. Attend working team meetings as scheduled, typically two calls per month with some in person meetings as determined by the team

Members

1. Attend quarterly Roundtable meetings and, when required, approve or change proposals by the Executive Team
2. Share relevant announcements and updates to Quarterly Roundtable meetings; productively contribute to discussions, honoring the obligation to dissent when necessary
3. Volunteer for working teams if able and/or want to see something done by the Roundtable



11/14 Roundtable Agenda Ideas

Agenda items

- **Mastication** – 2:30 hours
 - Purpose: Share information on the science of mastication and develop a Roundtable statement on the role of mastication in the Roundtable vision (when is it appropriate, how much is appropriate, where does it make sense and not?). Ask speakers to provide not only results but their personal opinions on what the RT recommendations should be.
 1. Brett Wolk – summarize other research? What exactly? Moderator for the 4 speakers?
 2. Chad Hoffman – present findings from paper he authored on what we know about fire in masticated forests:
 3. Paula Fornwalt – impacts on understory plants:
 4. Mike Battaglia – fuels and forest regeneration:
 5. Chuck Rhodes – expert on nutrient cycling – soil impacts from mastication
 - Set up as a panel, give 5 minutes each to give the gist of what they know based on their research, open to audience questions and facilitated discussion (and drafting of the recommendation)
 - Terra: ask for pre-reads and distribute to Roundtable with expectation that people come prepared
 - 2 hours requested – all speakers have been confirmed!
- **National Indicators** (also a special virtual meeting being planned) – 15 minutes (post-decision update)
- **Colo Leg Bills:** review of the bills, implications for RT's work – led by Sallie or Cindy, with guest Rep. Exum – 1:15 hours
 - Use information sharing to gauge how we're feeling about how we're progressing on our policy-oriented RT recommendations

Previously considered agenda items:

- Ecological monitoring report from aerial imagery approach and CSE, as well as the socio-economic monitoring report (Rob Addington)
- Spatial Heterogeneity presentation (Kristen Pelz)
- Update from the Community Protection Team (Megan Davis)
- Update from Recommendations Refresh team? Or scoping / brainstorming on this topic?
- Wood Utilization group update
- Update RT scorecard?
- Biomass legislation update (Rob Davis)?
- Lyon Buttonrock (Chad Julian) – no longer appropriate?
- Mark Finney & Dave Caulkin from Missoula Fire Lab (Paige) – not available



11/14 Roundtable Agenda Ideas

Agenda items

- Mastication – 2 hours
 - Purpose: Share information on the science of mastication and develop a Roundtable statement on the role of mastication in the Roundtable vision (when is it appropriate, how much is appropriate, where does it make sense and not?). Ask speakers to provide not only results but their personal opinions on what the RT recommendations should be.
 1. Brett Wolk – summarize other research? What exactly? Moderator for the 4 speakers?
 2. Chad Hoffman – present findings from paper he authored on what we know about fire in masticated forests:
 3. Paula Fornwalt – impacts on understory plants:
 4. Mike Battaglia – fuels and forest regeneration:
 5. Chuck Rhodes – expert on nutrient cycling – soil impacts from mastication
 - Set up as a panel, give 5 minutes each to give the gist of what they know based on their research, open to audience questions and facilitated discussion (and drafting of the recommendation)
 - Terra: ask for pre-reads and distribute to Roundtable with expectation that people come prepared
 - 2 hours requested – all speakers have been confirmed!
- National Indicators (also a special virtual meeting being planned) – 15 minutes
- Ecological monitoring report from aerial imagery approach and CSE, as well as the socio-economic monitoring report (Rob Addington)
- Spatial Heterogeneity presentation (Kristen Pelz)
- Update from the Community Protection Team (Megan Davis)
- Wood Utilization group update

Previously considered agenda items:

- Biomass legislation update (Rob Davis)?
- Lyon Buttonrock (Chad Julian)
- Mark Finney & Dave Caulkin from Missoula Fire Lab (Paige) – not available



11/14 Roundtable Agenda Ideas

Agenda items

- Ecological monitoring report from aerial imagery approach and CSE, as well as the socio-economic monitoring report (Rob Addington)
- Spatial Heterogeneity presentation (Kristen Pelz)
- Update from the Community Protection Team
- National Indicators (also a special video)
- Wood Utilization group update
- Mastication – the science
 - Brett Wolk – summary
 - Chad Hoffman – presentation on masticated forests
 - Paula Fornwalt – impact
 - Mike Battaglia – fuels and
 - Chuck Rhodes – expert on
 - 2 hours requested – all speakers

Action item:

Terra to find location in Denver for
11/14

Previously considered agenda items:

- Biomass legislation update (Rob Davis)?
- Lyon Buttonrock (Chad Julian)
- Mark Finney & Dave Caulkin from Missoula Fire Lab (Paige) – not available

11/14 Roundtable Meeting Agenda:

Topic	Sub-topic	Timing	Duration
Opening: Check-in, social, and networking time		9:00 - 9:30	
Welcome: Introductions, announcements, about the Front Range Roundtable		9:30 - 10:00	0:30
Partner Updates: Local spotlight: Where/Who?		10:00 - 10:15	0:15
Lunch (break)			0:30
Break			0:10
Housekeeping	Fundraising		
	Contractor work plan for coming year		
	Calendar	2:55-3:25	0:30
Wrap-Up: Next steps, thanks		3:25-3:30	0:05
Closing: Clean up, social, and networking time		3:30-4:00	
Total (should be 6 hours)			6:10
Previously considered agenda items			
	Working Team Progress Updates?		
	Biomass legislation update (Rob Davis)?		
	Lyon Buttonrock (Chad Julian)		

Next Steps from Q4-14 September 26

Executive Team Meeting

Terra

- Add to Nov LR meeting agenda: how to apply AM to non-CFLRP work
- Add to standing ET agenda time for open issue resolution / discussion
- National Indicators special meeting: nag small group on date (call if needed, notify small group of need for pre-reads for LR team and the RT special meeting)
 - Notify/invite the RT ASAP
- Team support:
 - BUSS team - Talk to Mike E. about what he needs, maybe start with 3 then drop down to 2 or less.
 - Wildlife team - Ask Lynne/Rick if they want to move to Level 2 or 1, do they need support in creating report? What wouldn't get done if we drop from 3?
- 11/14 Meeting:
 - Find a meeting location
 - Updated Front Range Roundtable roles slide (page 10 of this presentation) - insert and explain at 11/14 RT meeting
 - Ask for pre-reads and distribute to Roundtable with expectation that people come prepared (mastication topic)
 - Clarify with Brett on his role – e.g. introduce the issue for laypeople? And facilitate the panel (Gali to be recorder)
 - Provide pre-read to RT on decision from national indicators special meeting
- Follow up with Megan & Paige on all open action items (see action items June 27)
- Check with Executive Team on final 2014 meeting

Paige

- Review the levels of support options on page 6 of this presentation. Think about what needs you have for the Recommendations Refresh team and let the Executive Team know.
- Invite Jeannie Nicholson to speak at 11/14 Roundtable meeting to discuss what's coming out of the Wildfire Reviews Committee, what she expects to see in the legislature, what input from the Roundtable they might value to get bills on the floor that get more work done on the ground, not just post-fire reaction (Paige to advise if she or Gali should ask Jeannie)

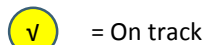
Greg

- Team support: ask LR team to do more self-governance, who will be co-chair? Set agenda, follow up as needed

Continued Next Page



= Completed



= On track

Front Range Roundtable



= Needs attention



= Deferred

Next Steps from Q4-14 September 26

Executive Team Meeting, continued

Continued...

Sallie

- Check CCCI and CCCJ calendars and let Terra know dates for 2015 you are available/unavailable
- Lead discussion

Carol

- Send to Cindy/Sallie the update on counties that need calls

Mike, Glenn, Paige, Cindy, Megan

- Check page 8 of this presentation and let Terra know what 2015 dates you are available.

RC

- Talk to Sallie about leading the discussion on review of Colorado bills at 11/14 Roundtable meeting; ask someone from the committee to attend too (and maybe ask Rep. Exum if Nicholson can't come)
-



= Completed



= On track

Front Range Roundtable



= Needs attention



= Deferred

Next Steps from Q3-14 June 27 Executive Team Meeting

Terra

- ✓ Send Erin two Roundtable Vision booklet.
- ✓ Make Sallie's seat on the Executive Team Structure orange (it's a dedicated seat).
- ✓ Look at the old team Implementation and Mapping team – look at their tracking PowerPoint slide and send it to Mark.
- Send Paige an invite for the next LR team meeting
- ✓ Talk to Casey about the goat topic. Who would be the speaker? How long (short?)
- Add to possible Roundtable agendas (possible agenda items) “support policies that stabilize funding...” from January Roundtable meeting.
- ✓ Invite LR team
- ✓ Look into Prairie facility in Longmont or the fairgrounds. If not ask Megan to check on Boulder.
- ✓ Invite the Executive Team to the field trips.
- ✓ Take names of possible Executive Team members off the presentation before posting.
- ✓ Send Gali an invite to the LR field trips.
- ✓ Move line on Roundtable Organization chart from Funders to Executive Team (now it's pointing to CUSP).
- ✓ Ask the Roundtable what issues they would like to bring up at the 9/5 meeting for discussion.
- ? Write up a draft form for communities asking for our support/endorsement, for Exec committee to agree on.

Executive Team

- ? Send draft form for communities asking for our support back to Terra and Gali within 3 weeks.

Megan

- ? Send information to the Executive team on Colorado Climate Network team – they are...
- ? Send customized fundraising letter to Carol.
- ✓ Megan to book the Prairie room for the 9/5 Roundtable.

Carol: will send to Cindy/Sallie the update on counties that need calls



= Completed



= On track

Front Range Roundtable



= Needs attention



= Deferred

Next Steps from Q3-14 June 27 Executive Team Meeting

Mark

- Updating Maps - Talk to Glenn about prioritizing the map.
 - He will talk to Brett about the data he already has.
 - Talk to Scott Woods.

Paige

- Get JSFS results (so we know what' been funded)

Paige & Megan

- Next CPT meeting have Jeannie Nicholson attend to talk about Colorado Climate Network.

Mike (with Greg)

- Call Chuck about his possible position on the Roundtable. Ask if he could represent the industry. Mike will initiate. They will provide feedback for next Executive Team.

Carol

- Talk to Marilyn Gally about an emergency management seat on the Executive Team Roundtable.
- Put together pre-proposal for Resource Conservation Partnership program.

Erin

- Let Terra and Gali know when Dianna Trujillo begins so she can be her backup on the Executive Team.

Cindy

- Send invoice to Larimer and Grand counties.

Terra: follow up with Megan & Paige on all open action items (specifically Jeanne invite)



= Completed



= On track

Front Range Roundtable

© 2014. All rights reserved.



= Needs attention



= Deferred

Next Steps 4-11-14 Roundtable Meeting

- ✓ • **Terra** – Send Jim McGannon, Marcia Pfleiderer and Shawna Crocker a copy of the Roundtable booklet
- ✓ • **Terra** - Talk to ET about moving the next Roundtable from August 29 to September 5 (Aug 29 is the Friday before Labor Day).
- ✓ • **Mark:** Work on maps of where treatments are. It's been about a year since this has been updated.
- ✗ • **Andrew Perri** – Lead a meeting to discuss biomass and the Roundtable. The following folks will attend: **Chuck Dennis, Mike Lester, Jim McGannon and Mike Eckhoff.**
- ✓ • **Paige** - Start a group discussion around updating the 40-year treatment. Led by Paige and will include Caesy, Rob, Paige, Greg, James Schriever, Matt Schulz, Chuck, Mike McHugh. Paige will also ask the larger group.
- ✓ • **Terra** - to change next Roundtable meeting to ~~8/22~~ 9/5.

Completed



= Completed



= On track

Front Range Roundtable















= Needs attention



= Deferred

Next Steps from Q1-14 Feb. 28 Executive Team Meeting

- Glenn:
 -  • AR / Farm Bill designation project: Let ET / Roundtable know status of project and need for support as needed
 -  • Let Carol et al know what you learn about the USFS/NRCS 2-Chief collaboration – find out mechanics of the program and how we can be a part of it
 -  • Help Mark M. prioritize updating the treatment map
- Gali
 -  • Ask Roundtable who can join a new team to launch a process to update the 40 year vision (including updating the treatment plan, using new USFS tools to identify areas of greatest exposure to fire risks,)
 -  • Ask LR team to designate new liaison to ET → ask LR team to come up with their nomination, if none, ask Greg, Casey, Jenny
- Terra
 - Add Roadless Rule map to “About Roundtable” documents (replace old treatment map)
 -  • Find out if any ET members need to be recused from Crystal Lakes letter
 -  • Put on future ET agenda to define criteria for when to write letters for future community requests (e.g., community specific CWPP, in RT vision area, Firewise community, active participant in county wide CWPP)
- Paige:
 -  • Ask Mark Finney & Dave Caulkin from Missoula Fire Lab (Paige) about presenting to RT
 -  • Call Carol to talk about Funding
- Everyone on ET:
 -  • Come early or state late on 4/11 to talk about 2015 contractor billing rates
- Carol:
 -  • Ask Donna at Greeley water to donate
 -  • Coordinate pre- or post- 4/11 meeting with ET to discuss 2015 contracting (reserve a private room at meeting location)



= Completed



= On track

Front Range Roundtable



= Needs attention



= Deferred

Fundraising Update

As of January 2014

Entity	Income			Expenses	
	Requested	Received	Approved Agreement	Item	
Aurora Water	\$1,000.00	\$1,000.00		Contractor expense to date	14,700.32
BLM	\$500.00			Non-personnel (shipping, copying)	17.43
Boulder County	\$2,500.00	\$2,500.00		Total	14717.75
Clear Creek County	\$1,000.00	\$1,000.00			
Colo Mtn Club	\$500.00				
Colo State Forest Svc	\$5,000.00	\$5,000.00			
Colo Spgs Utilities	\$1,000.00	\$1,000.00			
CTIA	\$200.00			CUSP INKIND Contribution	
Denver Water – LT CONTRACT	\$2,500.00	\$2,500.00		Staff Expenses	3141.28
DNR	\$200.00				
Douglas County	\$2,500.00	\$2,500.00			
El Paso County	\$2,500.00				
Environ Energy Partners	\$200.00				
Forest Energy Colorado	\$500.00				
Gilpin County – PAID 2014	\$250.00	\$250 thru ARP			
Grand County	\$1,000.00				
Greeley Water	\$1,000.00				
Jefferson County	\$2,500.00				
Larimer County	\$500.00				
Park County	\$1,000.00	\$1,000.00			
Southern Rockies Con Alliance	\$500.00				
Teller County	\$1,000.00	\$1,000.00			
TNC	\$3,181.43	\$3,181.43			
USFWS	\$2,999.00	\$2,999.00			
USFS--Including RMRS	\$20,965.00		\$20,965.00		
Total	\$54,995.43	\$23,930.43	\$20,965.00		



Budget Update—2014 YTD Expenses & 2015

Budget Planning

2014 Expenses YTD and Annualized Estimate

Month-year	Full name	Hours	Billing rate per hour	Fees	Expenses	Total Fees + Expenses
2014, 01. January	Gali Beh	18:45	\$55.00	\$1,031.25		
	Terra Lenihan	82:00	\$40.00	\$3,280.00		
2014, 01. January Total		100:45	\$44.84	\$4,311.25	\$318.99	\$4,630.24
2014, 02. February	Gali Beh	4:30	\$55.00	\$247.50		
	Terra Lenihan	37:45	\$40.00	\$1,510.00		
2014, 02. February Total		42:15	\$41.80	\$1,757.50	\$30.00	\$1,787.50
2014, 03. March	Gali Beh	8:00	\$55.00	\$440.00		
	Terra Lenihan	39:15	\$40.00	\$1,570.00		
2014, 03. March Total		47:15	\$47.06	\$2,010.00	\$23.00	\$2,033.00
2014, 04. April	Gali Beh	18:00	\$55.00	\$990.00		
	Terra Lenihan	52:00	\$40.00	\$2,080.00		
2014, 04. April Total		70:00	\$44.09	\$3,070.00	\$154.14	\$3,224.14
2014, 05. May	Gali Beh	4:15	\$55.00	\$233.75		
	Terra Lenihan	32:45	\$40.00	\$1,310.00		
2014, 05. May Total		37:00	\$41.73	\$1,543.75	\$0.00	\$1,543.75
2014, 06. June	Gali Beh	6:30	\$55.00	\$357.50		
	Terra Lenihan	39:00	\$40.00	\$1,560.00		
2014, 06. June Total		45:30	\$42.25	\$1,917.50	\$63.10	\$1,980.60
2014, 07. July	Gali Beh	0:30	\$55.00	\$27.50		
	Terra Lenihan	16:30	\$40.00	\$660.00		
2014, 07. July Total		17:00	\$42.00	\$687.50	\$0.00	\$687.50
2014, 08. August	Gali Beh	0:15	\$55.00	\$13.75		
	Terra Lenihan	48:30	\$40.00	\$1,940.00		
2014, 08. August Total		48:45	\$40.75	\$1,953.75	\$5.00	\$1,958.75
Grand Total		408:30	\$44.67	\$12,692.50	\$526.13	\$17,845.48
Annualized estimate						\$26,768.22

For Discussion: 2015 Budget Planning

	YTD 2014	Proposed rates		
Gali's hours	60:45	\$	90.00	\$ 5,467.50
Terra's hours	347:45	\$	55.00	\$ 19,126.25
YTD comparison	408:30			\$ 24,593.75
Annualized estimate				\$ 36,890.63



2014 Front Range Roundtable, LR & Wildlife

Team	Event	Location	Date	Time
Roundtable	Quarterly Meeting	Colorado Department of Wildlife - Colorado Springs	Friday, January 10, 2014	9-3:30
LR	LR Meeting 39	JeffCo Taj Bldg, 100 Jefferson County Pkwy, Golden	Thursday, January 23, 2014	10am - 3pm
WWT	Monthly Meeting	Colorado Department of Parks & Wildlife, 6060 Broadway, Denver	Tuesday, January 21, 2014	10am - 3pm
LR	LR Meeting 40	JeffCo Taj Bldg, 100 Jefferson County Pkwy, Golden	Wednesday, February 12, 2014	10am - 3pm
WWT	Monthly Meeting	GoTo Meeting	Tuesday, February 18, 2014	10am - 1pm
ET	Quarterly Meeting	USFS Regional Office, 740 Simms St. Golden – Cargill Room	Friday, February 22, 2014	9:30-12:30
LR	LR Meeting 41	GoTo Meeting		11:30am-3pm
WWT	Monthly Meeting	USFS Regional Office, 740 Simms St. Golden		10am - 3pm
LR	LR Meeting 42	JeffCo Taj Bldg, 100 Jefferson County Pkwy, Golden		10am - 3pm
Roundtable	Quarterly Meeting	Denver	Friday, February 22, 2014	9:30-12:30
WWT	Monthly Meeting	USFS Regional Office, 740 Simms St. Golden		10am - 3pm
LR	LR Meeting 43	GoTo Meeting		10am - 3pm
WWT	Monthly Meeting	USFS Regional Office, 740 Simms St. Golden		10am - 3pm
LR	LR Meeting 44	USFS-RO		10am - 3pm
WWT	Monthly Meeting	USFS Regional Office, 740 Simms St. Golden		10am - 3pm
ET	Quarterly Meeting	USFS Regional Office, 740 Simms St. Golden– Cargill Room – IN PERSON	Friday, February 22, 2014	12:30 – 3:30 pm
LR	LR Field Trip	Field Trip to the AR	Wednesday, August 13, 2014	11:30am-3pm
LR	LR Field Trip	Field Trip to the Pikes	Wednesday, August 20, 2014	10am - 3pm
Roundtable	Quarterly Meeting	Boulder/Longmont	Friday, September 5, 2014	9-3:30
LR	LR Meeting 45	GoTo Meeting	Wednesday, September 10, 2014	11:30am-3pm
ET	Quarterly Meeting	USFS Regional Office, 740 Simms St. Golden– Cargill Room – PHONE	Friday, September 26, 2014	9:30 – 12:00
LR	LR Meeting 48	USFS-RO	Wednesday, October 22, 2014	10am - 3pm
Roundtable	Special Meeting for National Indicators	GoTo Meeting	October 24-November 5, 2014	1 ½ hours
LR	LR Meeting 49	GoTo Meeting	Wednesday, November 12, 2014	11:30am-3pm
Roundtable	Quarterly Meeting	Denver	Friday, November 14, 2014	9-3:30
LR	LR Meeting 50	JeffCo Taj Bldg. 100 Jefferson County Pkwy. Golden	Wednesday, December 10, 2014	10am - 3pm

Terra: check with others on 12/5 (Carol & Erin can't do 12/12), if 12/5 not good may need another day (not Friday)

Red = changes



Executive Team Meeting

Completed Work Plans (Don't Print)

Facilitated by:



Front Range Roundtable

© 2014. All rights reserved.

Next Steps from Q1-13 January 31 ET Call

- ✓ 1. The new Roundtable initiative to do “large scale planning for future treatments to meet the Roundtable’s 40 year vision:” **Glenn** and **Jeri** will speak to their respective staffs about pulling together the USFS’s long term treatment plans to share with the Roundtable at the May 31 meeting, as a starting point to collaboratively developing a long term treatment plan.
- ✓ 2. The new Roundtable initiative to “increase social acceptance of smoke management and prescribed fire:” **Megan** will bring this topic to the Community Protection Team to see if that team’s work can address this issue. 5/9 update: Group discussed it, but didn’t want to take it on as a team initiative
- ✗ 3. The new Roundtable initiative to “support policies that stabilize funding at adequate levels to meet management objectives:” The ET did not see a clear role for the Roundtable on this effort other than federal legislative outreach (e.g., DC trips) and supporting ad hoc outreach efforts of local counties and municipalities. **The ET agreed to bring this question back to the Roundtable about what the counties and local gov’ts would like to see the Roundtable actively do.**
4. The next quarterly Roundtable meeting:
 - ✓ 1. **Glenn** is helping Gali confirm Dan Jiron’s timing (10:30am – 12pm) and a location for 3/8 (we are still having trouble finding a room big enough but have feelers out to two more locations – please let us know if you have other suggestions than USFS RO and Jeffco, which are both booked)
 - ✓ 2. Tony Cheng recommended guest speaker—Dr. Susan McCaffrey—to speak about social science aspects of forest restoration and treatments; the ET decided to expand this topic into a panel and **Terra** will work with Tony to invite Dr. McCaffrey and authors from another social science study that Glenn recommended (Public Perceptions of the Mountain Pine Beetle in Three Study Areas in Northern Colorado and Southern Wyoming, see documents below)
 - ✓ 3. **Gali** will send a draft agenda to the ET after the other potential speakers are confirmed. In addition to speakers, the agenda will allow plenty of time for debriefing from the 11/30/12 meeting when the Roundtable prioritized 3 new long-term initiatives. We will break into groups and also discuss in plenary how to proceed on each initiative.
- ✓ 5. The Colorado Collaboration Award: **Carol** and **Megan** will look into possibly applying for this grant, with the support of a CUSP staff member, Helen Dyer. 5/9 update: no MOU was an issue

Completed



= Completed



= On track

Front Range Roundtable



= Needs attention



= Deferred

Next Steps from Q2-13 May 31 Roundtable Meeting

1. **Gali Beh:** Facilitate the Executive Team to:

- ✓ a. Plan the agenda for the Quarter 3 Roundtable meeting. Several agenda items were suggested at the Q2-13 Roundtable meeting:
 - a. Report on UMC project by Paige
 - b. Present biomass legislation issues by Rob Davis
 - c. Report from the Missoula Fire Lab (suggested by Paige)
- ✗ b. Write a letter to the Department of Natural Resources and the Colorado State Forest Service (and other applicable groups involved with prescribed fires). The topic is “Maintain Prescribed Fire Capacity.” Send points to Terra and she can craft the letter. 7/23: happy to have the conversation we had on 5/31, look forward to working with multiple agencies on PF in the future; this is a priority for the RT; or maybe also draft a rulemaking to the DPS; recommend that CSFS staff with PF capacity be allowed to participate in non-state lands PF; send letter to RT members to seek who is interested in signing on to letter, do letter as private / outside of the RT, so it doesn't have to be watered down

2. **Megan Davis:** Send Boulder County's mountain landowner information (aerial maps) to the Roundtable

3. **Trey Schille:** Send Roadless Rule information and link to GIS data to the Roundtable

4. **Paige Lewis:** Look into news article about Lyle Lavery regarding the CFLRP project litigated

5. **Terra Lenihan:**

- ✓ a. Send BUSS team members to Craig Jones
- ✓ b. Ask Karl Kumli (Lenihan's office) and Andrew Notbohm (Boulder County FPD) if they'd like to join the Roundtable (they attended Q2-13; Notbohm was previously a member with Colo Spgs FPD)
- ✓ c. Find a location for the Quarter 3 Roundtable meeting (waiting to here from Jenny Briggs on the USGS location)

6. **Lisa Dale:** Let the Roundtable know who is serving on the Wildfires Review Committee (when known) (Lisa emailed in June that they committee hasn't been formed yet; she'll let us know when it is)

7. **Mark Martin:** overlay the Roadless Rule Boundary onto the 2009 map of the Roundtable priority treatment areas

Completed



✓ = Completed

● = On track

Front Range Roundtable

● = Needs attention

✗ = Deferred

Next Steps from Q3-13 July 23 Executive Team Meeting

1. Carol
 - 1. Assign Jon to lead fire adapted communities panel at the 9/13 RT meeting
 - 2. Lead insurance report discussion
 - 3. Invite new CUSP CPA, Adam Newburn, to next ET meeting (not ready to join yet, but will soon)
 - 4. Ask staff to send Megan invoices for counties that have not paid
 - 5. Ask West Range Reclamation to contribute
 - 6. Let Gali know outcome of work plan discussion and next steps for contracting

2. Megan:
 - 1. Designate lead for CPT presentation
 - 2. Confirm that Cindy will stay through May 2014
 - 3. Work with Cindy to send outstanding invoices to County – ~~Jefferson only, one left~~

3. Paige:
 - 1. Check in with Rob Davis on leading biomass policy agenda item
 - 2. With Carol, lead letter on prescribed fire to Governor re broadcast burning

4. Terra
 - 1. Create agenda, location doc – send agenda to ET to confirm
 - 2. Send save the date
 - 3. Send RT request for people who want to participate in letter on prescribed fire (see slide 8)
 - 4. Add Adam@uppersouthplate.org to ET list
 - 5. Move ET meeting to 10/11, find room, confirm with Glenn & Sallie

Completed



= Completed



= On track

Front Range Roundtable



= Needs attention



= Deferred

Next Steps from Q4-13 Oct. 11 Executive Team Meeting

- Sallie:

- 1. Reach out to Larimer County to see if we can get attendance on 11/22

- Carol

- 1. Confirm Jonathan to lead/recruit CP panel
- 2. Recruit speakers for Insurance Task Force discussion 11/22; ask Kelly from insurance, Scott Woods, Kevin Klein (OEM)
- 3. Follow up with Cindy to ask her to fundraise from Jefferson County
- 4. Ask Greeley Water to donate (refer to Sallie in "ask")
- 5. Hold call with Paige re: Funding and also JSFP funding/RFP – report to RT in Nov on research opportunity to find out how past fires contributed to recent flooding.
- 6. Resend letter extending contract to Gali.

- Paige

- 1. Confirm Rob/Mike for Biomass panel
- 2. Lead and recruit speakers for policy/legislative panel 11/22. Include information on flood insurance and what's going on at national policy level.
- 3. Talk to Carol regarding funding as well as fires/flooding/flood insurance

- Terra:

- 1. schedule call with Lisa Dale for early November (Paige, Pam, Gali, Lisa) to discuss state moratorium on broadcast fire – invite other ET members after we select date; may want to talk Paul Cook (DFPC – fire prev and control) after Lisa; bring results of this call to RT mtg 11/22 as part of prescribed fire discussion; wait until after 11/22 to write letter
- 2. Create 11/22 agenda, location doc – send agenda to ET to confirm first, then Roundtable
- 3. Send save the date for 11/22
- 4. Confirm all logistics for 11/22
- 5. Confirm CFLR speakers for 11/22
- 6. Ask Lynne and Rick to attend next LR meeting to integrate CFLR comments
- 7. Check with Megan – CP Team update at 11/22 meeting
- 8. RSVP paige, Pam, Mike, Carol, Sallie to 11/22
- 9. Propose 2 Fridays for each month that we would meet: (Sallie – can't do 2/3d Fri each month – check CCI calendar – ccionline.org)
 - 1. ET: Jan/Apr/July/Oct (early in the month – except for CCI conflict dates: 3rd or 4th)
 - 2. RT: Feb/May/Sept (early)/Nov (late)

Completed



= Completed



= On track

Front Range Roundtable



= Needs attention



= Deferred

Next Steps from Q1-13 March 8 Roundtable Meeting

1. **John Ring:** Help on the teacher training / outreach initiative led by Shawna Crocker
2. **Carol Ekarius:** Work with Mike McHugh to plan two summer field trips for elected officials to Waldo and High Park fire sites (Shawna Crocker offered to coordinate using CSU's vans which can seat 12 passengers each); 5/9 update: just for elected officials, not as part of the RT mtg; 7/23: Mike selecting date in late August; tour sites already selected; look into CSU's or Boulder County vans for transportation, otherwise, rent a bus
3. **Peter Brown:** Look into planning a science / education symposium, perhaps in partnership with the Colorado Forest Collaboratives group led by Lisa Dale, perhaps in partnership with the CFLR Coalition or the NFF's CFLR webinars. Activities may include: writing a letter to CFLR and others to coordinate a science synthesis; 5/9 update:
4. **Rob Addington:** Work with Mike Faber to speak with the state Prescribed Fire Council to get ideas about the Roundtable can participate in promoting the increased use of prescribed fire
5. **Hal Gibbs:**
- 1. Work with Mark Martin & Craig Jones on thinking through the future of the BUSS team (biomass utilization and slash site); ask Mike Smith how the Roundtable can best stay up to date on biomass utilization opportunities, challenges, progress and needs
 - 2. Work with data providers and a GIS expert on updating the 2009 Roundtable map of where forest treatments have taken place, in relation to where the Roundtable recommended that forests be treated for forest restoration and/or fire risk mitigation

Completed



= Completed



= On track

Front Range Roundtable



= Needs attention



= Deferred