



Landscape Restoration Team

Meeting 36

Wednesday, November 13, 2013

Facilitated by:



Front Range Roundtable

© 2013. All rights reserved.

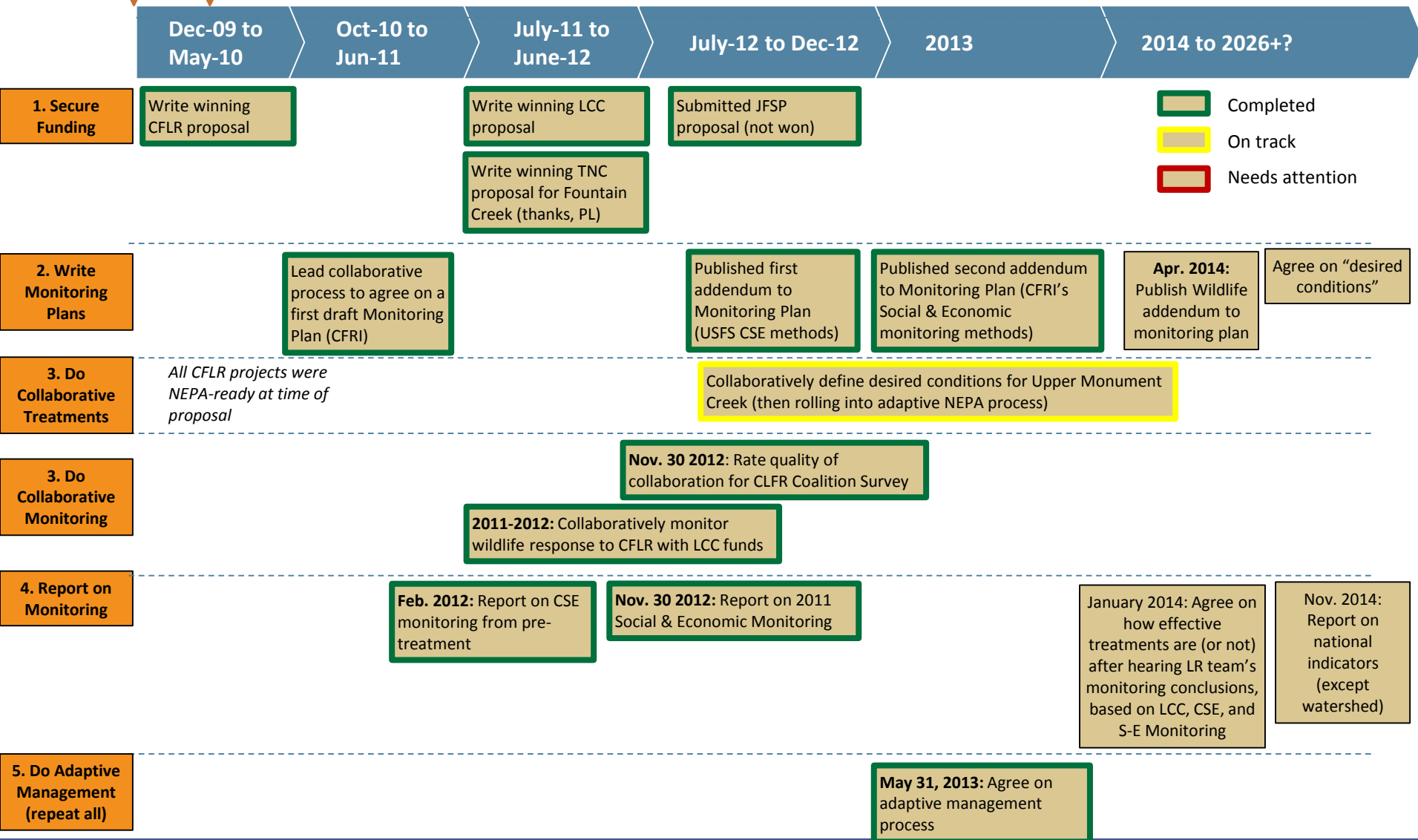
LR Team Meeting 36 Agenda

1. Introductions / ice breaker / review agenda (10-10:15)
2. 2012 Social Economic Report findings – Kathie Mattor (10:15-11)
3. Forming a sub-team to recommend a standard report and method for the CSE monitoring results - Rob (11-11:10)
4. Implementation Monitoring addendum (11:10-11:25)
5. Lunch (11:25-11:45)
6. National Indicators (11:45-3)



Front Range CFLRP: High Level Work Plan

Dec. 2009: Proposal written
 May 2010: Proposal awarded



Completed
 On track
 Needs attention



Landscape Restoration Team: Near Term High Level Work Plan

Mar 8, 2013: Q1 Roundtable meeting

May 31, 2013: Q2 Roundtable meeting

Sept 13, 2013: Q3 Roundtable meeting

Nov. 22, 2013: Q4 Roundtable meeting

Jan-Mar, 2013

Apr-Jun, 2013

Jul-Sep, 2013

Oct-Dec, 2013

Jan. 9, 2013: Report on results from historic reconstruction research at Hall & Heil Ranches

Jan. 9 – Feb. 13, 2013: Agree on recommendations to Roundtable on adaptive management process

Feb 19-20: Hold field trips to Long John & Waldo (UMC)

Feb – May: Plan ARP and PSI field trip sites

July 9 (AR), & 11 (PSI): Hold field trips to ARP treatment sites

March 13: Report on LCC monitoring results

March 13 : Report on CSE results

May 31, 2013: Propose recommendations to Roundtable on adaptive management process

April-May: Write more detailed description of adaptive management process

April-Sept: Apply adaptive management process to UMC

April-Dec: Agree on extent to which CFLR treatments from 2011 and 2012 are on trend towards meeting objectives

May - July: Define assumptions and uncertainties in CFLR project

Sept 11: Report on spatial heterogeneity

Sept 11: Update from Wildlife team

Oct 9: Devote monthly meeting to national indicators

Nov 13: Review GTR draft

Nov 13: Report on 2012 social & economic monitoring

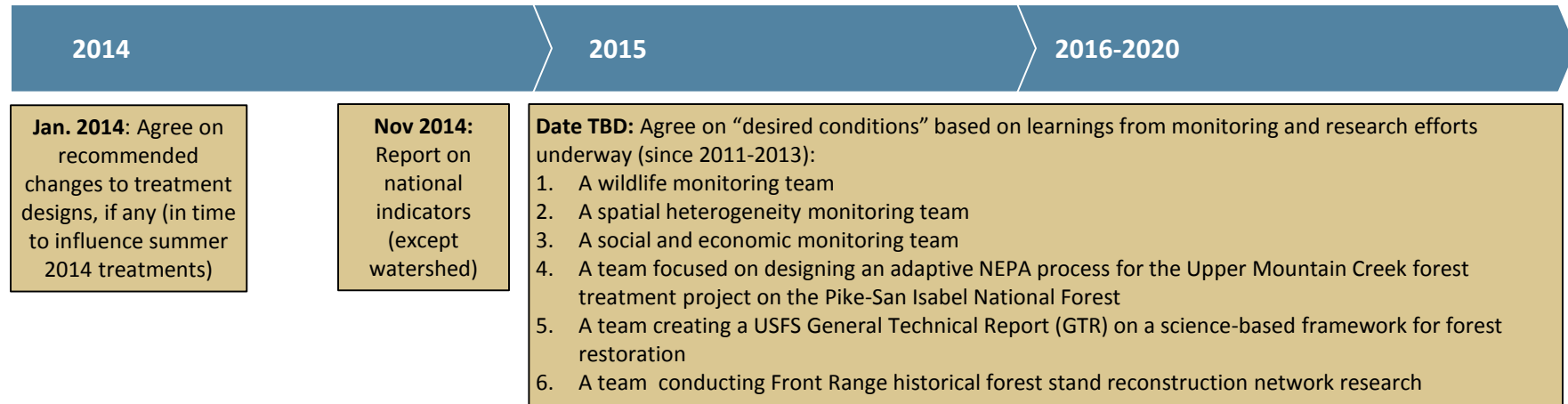
Dec: Report on new LCC Monitoring findings?






Sept 11: Form a CSE Report sub-team to agree on a standard report and methods

- Deliverable or decision point
- Completed
- On track
- Needs attention
- Tentative



Landscape Restoration Team: Long Term High Level Work Plan

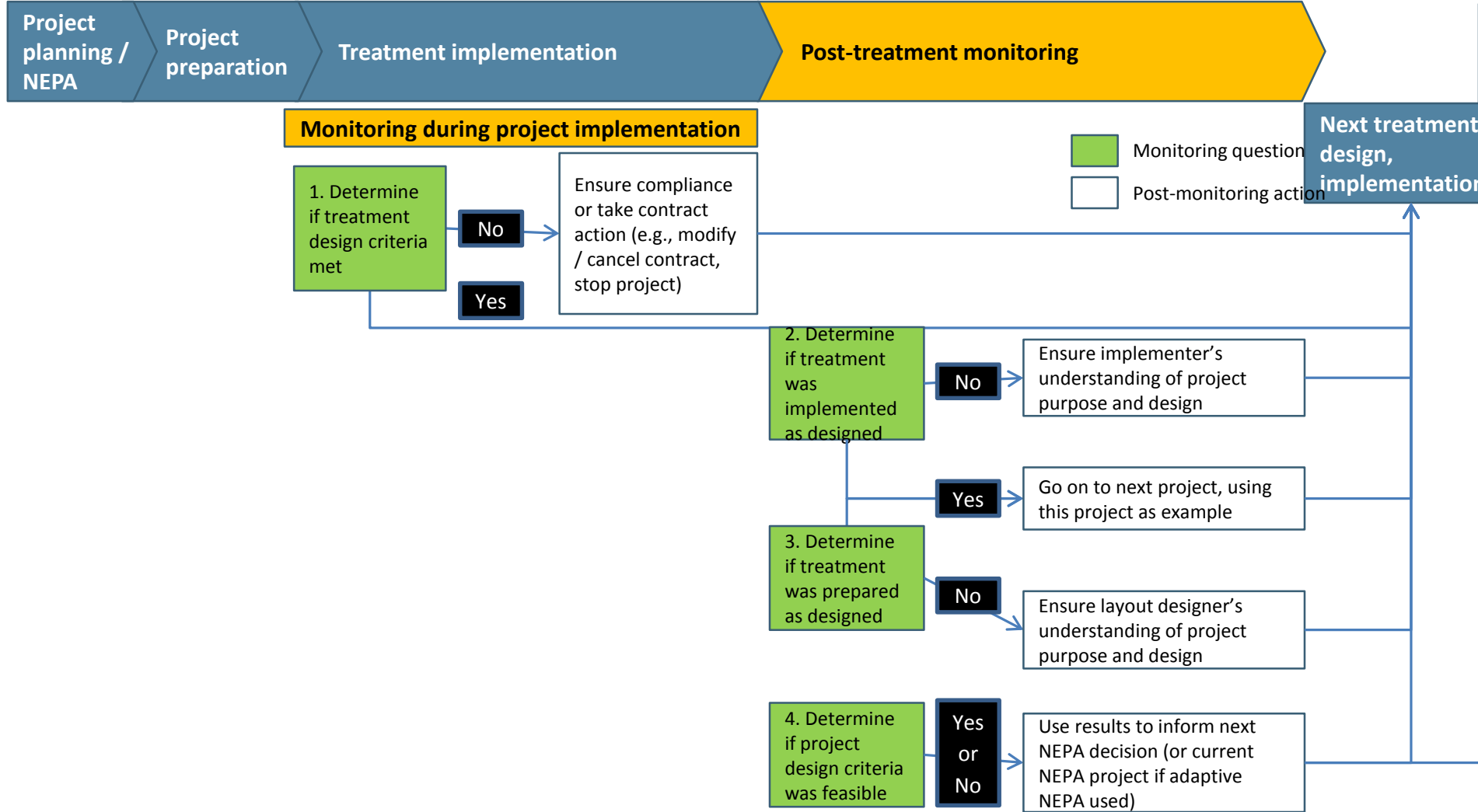


-  Deliverable or decision point
-  Completed
-  On track
-  Needs attention
-  Tentative



Implementation Monitoring

Current NEPA Project



Roundtable Wildlife Team—Project Outline

Team Roundtable Wildlife Team	Mission <i>Prioritize an abridged list of species to monitor for the CFLRP Monitoring Plan, predict population trends for each target species if forest restoration is achieved, and recommend data collection and monitoring methods for each target species given funding constraints and monitoring methods available.</i>	Deliverables A final report building from existing CFLR monitoring plan and including:
Timeline Team Launched Nov. 13, 2012; will complete work by February of 2014.	Goals <ol style="list-style-type: none"> 1. Identify primary and secondary species for monitoring that meet CFLRP and FS needs 2. Develop hypothesized species response (\approx population trends) for each 1° and 2° species 3. Explicitly integrate spatial and temporal scales in species selection and sampling approach 4. Establish range of monitoring options that encompass cost and rigor spectrums as needed 5. Identify field sampling protocols for selected species 6. Describe potential analytical methods 7. Identify opportunities for collaborating entities to contribute to monitoring implementation 	<ol style="list-style-type: none"> 1. Overview of field protocols, sampling approaches, and potential analytical approaches 2. Options: balancing rigorous monitoring of 1° species and casual monitoring of 2° species 3. Wildlife Team’s recommendations: based on funding, rigor, public interest

Rick & Lynne to edit

Scope

1. **Focus:** past efforts have focused on vegetation structure and assumptions that if we do good things for structure, the wildlife will benefit. This effort will focus on the need for wildlife monitoring, informed by but not dependent upon desired conditions for vegetation
2. **Species:** Open to including any species; will consult list of species from 2011 CFLR Monitoring Plan but we will not be limited by the past plan
3. **Scale:** Will include both landscape scale and site scale considerations in recommending monitoring methods and estimating expected outcomes; we will need to define “landscape” as well, possibly by species (will refer to language developed by other related efforts to define restoration and desired conditions) – *Rick to edit*
4. **Methods:** Will consider the best, most effective, and efficient monitoring methods; will not be constrained by the USFS’s Common Stand Exam or currently available funding. We will only recommend monitoring species with existing established or emerging monitoring protocols—we will not invent new protocols. If preliminary protocols don’t already exist for a species, that species will not be included in the monitoring recommendations.
5. **Places:** Recommended wildlife sampling will be within the CFLRP project area (both on and off treatment sites) and will not be constrained by Common Stand Exam (CSE) monitoring plots.

Why this / why now?

1. In the past, CFLR monitoring has focused on vegetation structure with the assumption that if we do what is right for the forest, then we’re doing what is right for the wildlife. We need to test this assumption to see if it is true. Monitoring wildlife is the only way to know if this assumption is correct. Sometimes there are struggles between fuels reduction for fire risk mitigation and restoration for habitats for species. The impact of this struggle is that sometimes forest planners want to pick up every piece of litter and duff to reduce fire risk but this does not restore wildlife habitats. Downed woody debris plays an important role for wildlife habitat restoration. Treatments may increase forage for elk but they may reduce forage for songbirds, so we need to decide for which species we’re restoring habitats and what impacts we expect forest restoration to have on them.
2. Wildlife monitoring has historically been de-prioritized in USFS budgets. It’s costly and difficult. There is not as much public demand for this as for other resource objectives. Statutes are not clear on what is required to monitor populations in a rigorous manner. It will be a cultural shift for the USFS to start focusing on wildlife monitoring as well as vegetation monitoring. Few groups have spent time thinking these issues through. The USFS has always reacted to legal suits rather than be proactive to do the hard thinking on if and how to do wildlife monitoring.
3. The Roundtable wants to monitor wildlife use pre- and post-treatment to learn if what we’re doing has any beneficial or detrimental effects to wildlife. A team of representative stakeholders is needed to arrive at the compromises necessary to do wildlife monitoring effectively and cost-efficiently.



Front Range Roundtable, LR & Wildlife Team Calendar

Team	Event	Location	Location / Call Details	Date	Time
LR	Meeting 31	in person	JeffCo Taj Mahal, 100 Jefferson County Pkwy, Golden, CO 80419, Kittridge/Pleasantview rooms (1563/64)	Wednesday, May 8, 2013	10 am-3 pm
Wildlife	Meeting 8	in person	USFS Regional Office, 740 Simms St. Golden	Tuesday, May 21, 2013	10 am -3 pm
RT	Q2 RT Meeting	in person	Boulder County Clerk & Recorder, 1750 33rd Street, Boulder, CO 80301	Friday, May 31, 2013	9:30 – 3:30
LR	Meeting 32	in person	JeffCo Taj Mahal, 100 Jefferson County Pkwy, Golden, CO 80419, Kittridge/Pleasantview rooms (1563/64)	Wednesday, June 12, 2013	10 am-3 pm
Wildlife	Meeting 9	in person	USFS Regional Office, 740 Simms St. Golden	Tuesday, June 18, 2013	10 am -3 pm
LR & Wildlife	Field Trip – AR	In person		Tuesday, July 9, 2012	8am – 5pm
LR & Wildlife	Field Trip – PSI	In person		Thursday, July 11, 2012	8am – 5pm
Wildlife	Monthly Meeting	in person	USFS Regional Office, 740 Simms St. Golden	Tuesday, July 23, 2013	10 am-3 pm
LR	LR Mtg 34	in person	JeffCo Taj Mahal, 100 Jefferson County Pkwy, Golden, CO 80419, Kittridge/Pleasantview rooms (1563/64)	Wednesday, August 14, 2013	10 am-3 pm
Wildlife	Monthly Meeting	in person	USFS Regional Office, 740 Simms St. Golden	Tuesday, August 20, 2013	10 am-3 pm
LR	LR Mtg 35	in person	GoTo Meeting https://global.gotomeeting.com/join/712868381	Wednesday, September 11, 2013	11:30-3 pm
RT	Q3 RT Meeting	in person	USGS – Denver Federal Center	Friday, September 13, 2013	9:30 – 3:30
Wildlife	Monthly Meeting	in person	USFS Regional Office, 740 Simms St. Golden	Tuesday, September 17, 2013	10 am-3 pm
LR	LR Mtg 36	in person	USFWS offices, 134 Union Boulevard, Lakewood	Wednesday, October 9, 2013	10 am-3 pm
Wildlife	Monthly Meeting	in person	USFS Regional Office, 740 Simms St. Golden	Tuesday, October 22, 2013	10 am-3 pm
LR	LR Mtg 37	in person	JeffCo Taj Mahal, 100 Jefferson County Pkwy, Golden, CO 80419, Kittridge/Pleasantview rooms (1563/64)	Wednesday, November 13, 2013	10 am-3 pm
Wildlife	Monthly Meeting	in person	Colorado Division of Parks & Wildlife	Tuesday, November 19, 2013	10 am-3 pm
RT	Q4 RT Meeting	in person	El Paso Citizen Center, Colorado Springs	Friday, November 22, 2013	9:30 – 3:30
LR	LR Mtg 38	in person	JeffCo Taj Mahal, 100 Jefferson County Pkwy, Golden, CO 80419, Kittridge/Pleasantview rooms (1563/64)	Wednesday, December 11, 2013	10 am-3 pm
Wildlife	Monthly Meeting	in person	USFS Regional Office, 740 Simms St. Golden	Tuesday, December 17, 2013	10 am-3 pm





Appendix

Meeting 36

Wednesday, November 13, 2013

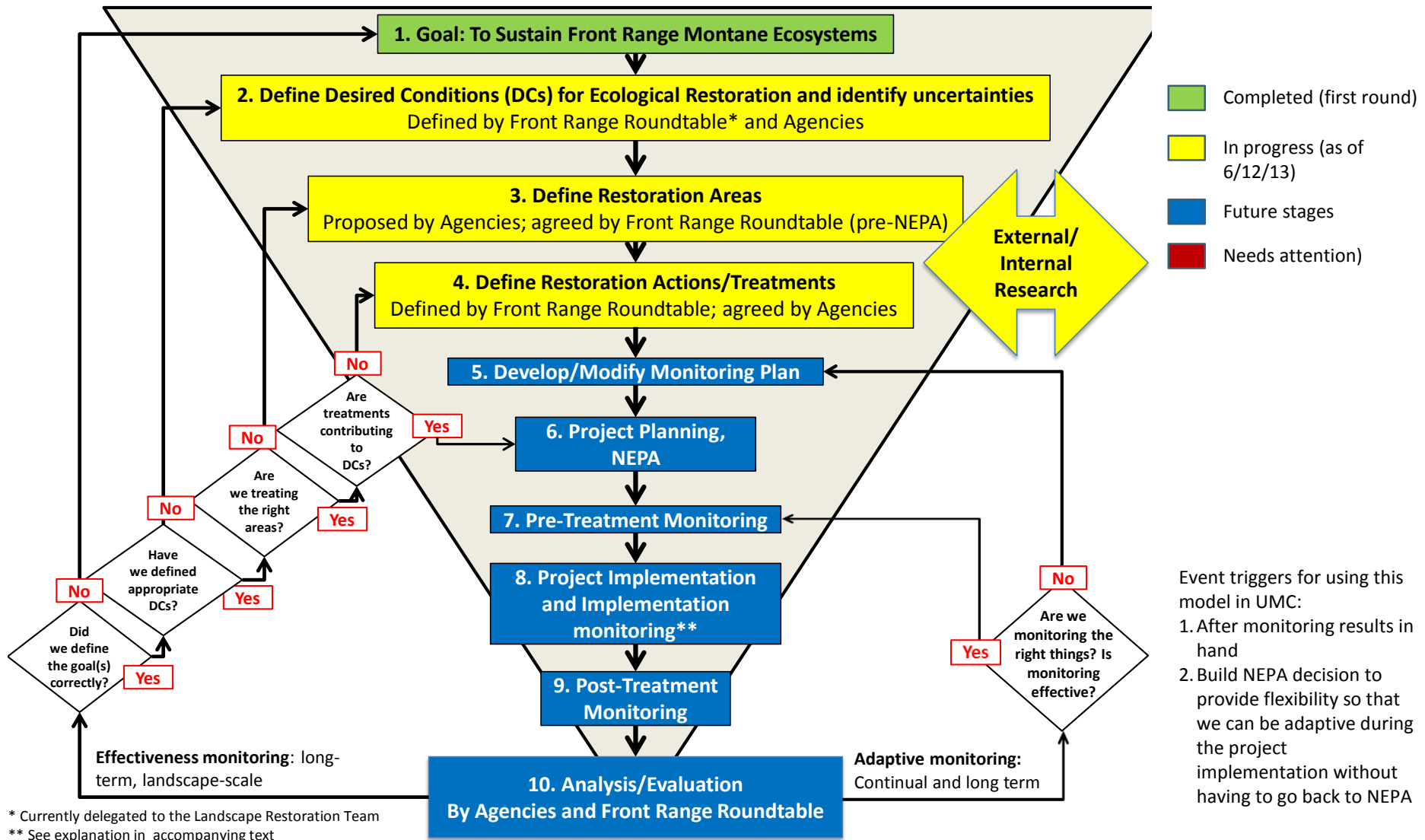
Facilitated by:



Front Range Roundtable

© 2013. All rights reserved.

Adaptive Management Model – In Use with UMC



National Indicators: Invasive species

1. **Desired condition:** Prevent / minimize the spread of invasive species from treatment actions (where areas are invaded, not spread them; where not invaded, not introduce them)
2. **Species:** List from the monitoring plan (12)? Forest service invasive species list?
3. **Monitoring method:**
 1. Pre-treatment: CSE + qualitative assessment compared with invasive species maps from planning;
 2. Post-treatment: CSE + qualitative review by invasive species experts
4. **Variables:**
 1. CSE plots: post-treatment area of invaded species vs. pre-treatment area
 2. Treatments sites that are not CSE plots: post-treatment presence / absence of species on a site
5. **Analysis:**
 1. Assess the vectors that brought the weeds in to the treatment areas that were invaded (e.g., possible vectors: not washing equipment)
 2. Correlation between bare soil immediately post treatment and infestation
 3. Did the forest treat the invasive species?
6. **Questions / Next steps:**
 1. Does the CSE need to be changed?
 2. For CSE, reduce list of 12 species to 10? For expert review; expand to include entire noxious weed list?
7. **Indicator statement:** ____ (%) of the CFLR landscape area was restored by reducing invasive species severity (**preventing**, controlling, or eradicating targeted invasive species) to meet desired conditions by ____ date.
[current invasion is essentially zero %; landscape is ~3 m acres, projects are ~30k acres]
 1. Landscape scale score: Target = NA
 2. Project scale score: Target = 100% (0 additional infestation) by 2025



National Indicators: Fire Regime

1. Desired condition:

1. Landscape desired conditions:
 1. Mixed severity fires that trends towards surface fires
 2. Reduce crown fire potential at 90th percentile weather (as modeled in fire behavior models)
 3. Decreased litter and duff
 4. Decreased or similar coarse woody debris
 5. (Fire Regime Condition Class 1)?
2. Project scale desired conditions: Move percent of forests modeling at active crown fire potential from 0.5% to 0.1%; passive crown fire potential from 33.7% to 6%; surface fire potential from 62.6% to 90.7%, and no fire potential stays the same at 3.2%

2. Monitoring method:

1. Landscape modeling: Landsum
2. Project scale modeling: FVS

3. Variables:

1. CSE plots: overstory trends?
2. Treatments sites that are not CSE plots:

4. Analysis:

5. Questions / Next steps:

6. **Indicator statement:** ____ change (relative to the desired condition) occurs across ____% of the landscape area by ____ date.

1. Landscape scale score: Target =