



Landscape Restoration Team

Meeting 38

Wednesday, December 11, 2013

Facilitated by:



Front Range Roundtable

© 2013. All rights reserved.

LR Team Meeting 38 Agenda

1. Introductions / ice breaker / review agenda (10-10:15)
2. ~~LCC results – **Jenny, Jonas, & Paula** (10:15-11) (Move to January)~~
3. ~~Report on Upper Fountain Creek Watershed Restoration Project - **Mike Babler** (11-12) (Ask Paige @ January)~~
4. Lunch (12-12:25)
5. Wildlife Team Update – **Rick** (12:25-12:50)
6. Plan understory monitoring methods in time to influence next field season – **Paula** (12:50-?)
7. Next Steps & 2014 Calendar – **Gali** (2:45-3)



LR Meeting Planned Agenda Topics

Dec (Completed)

1. Wildlife Team Update (Rick) - December
2. Plan understory monitoring methods in time to influence next field season (Paula) - December

Jan. 23

3. LCC results – Jenny, Jonas, & Paula – January (confirmed)
4. Presentation on heterogeneity work (Yvette) – January (confirmed)
5. Report on Upper Fountain Creek Watershed Restoration Project (Paige) – January?
6. Update on progress towards an understory team (Paula)
7. Update on progress towards an operationalizing adaptive management team (Rob)

Feb

8. Update on the “analysis / evaluation” phase of the adaptive management process by piloting it on the CSE monitoring results and the July field trips – Operationalizing AM Team - Feb
9. National indicators – February (fill in percentages for poor/fair/good), watershed & invasives
10. Pre-1860 stand structure report (Peter) – Feb

March

11. GTR draft report - March 2014



Next Steps from Dec. LR Meeting

Meeting Date: 12/11/13
Note: all action items due by next meeting unless otherwise shown

1. **Terra:**
 - a. Move 1/15 LR meeting to 1/23 (Thursday) – check with Yvette, Jenny, Jonas that they can present that day
 - b. Ask Paige if she can present on UFCWRP on January 23 (also ask if there is someone else from TNC that can start regularly attending LR meetings now that Mike is retiring)
 - c. Ask Kathie to send the S-E monitoring results for 2012 to post on website
 - d. When Rob sends you 2012 CSE monitoring results, post to website
 - e. Ask Jenny for 2011 LCC monitoring results for posting on website
 - f. Check with Peter on if he loaded the movie he wants to show on 1/10 on the FTP site (and if so, let Gali know to download it to her laptop)
 - g. Create new calendar slide for LR team

2. **Paula:**
 - a. Schedule meeting with Claudia, Hal, Steve Olson, Steve Popovich
 - b. Identify possible team members for understory team:
 - a. Claudia Regan – email her first, she expressed interest in the past (include Hal in conversation, also Steve Olson from Pike)
 - b. Approach CSU/CU candidates
 - c. Last year's team nominees—Casey, Greg, Yvette, Hal, Steve Olson, **Ed Biery (Pike)**, Tom Banks, Steve Popovich, Sheila Lamb, Rob Addington, Sara Mayben, Andy Crass, Claudia Regan, Lynne Deibel

3. **Hal:** Talk to Steve Popovich about understory team launch

4. **Jeff:** Talk to Steve Olson about understory team launch; let Sara know too

5. **Rob:** Talk to Tony about if CFRI can offer capacity to understory team

6. **Greg:** turn the AM paper into an “addendum to the CFLR monitoring plan” that we can post to the website



= Completed



= On track



= Needs attention



= Deferred

Next steps from Nov. LR Meeting

Meeting Date: 11/13/13
Note: all action items due
by next meeting unless
otherwise shown

1. Rob:
 1. Form and lead an “operationalizing adaptive management” team to:
 1. Create standard CSE report – accelerate timeline, by Feb 2014
 2. Answer “so whats” from the monitoring results – by Dec 2014
 3. Hold an annual monitoring results stakeholder meeting – by Spring 2014 (April/May) [2012 – 2013 data to be included]
 4. Team: Kathie, Jenny, Kristen, Jonas, Peter, Greg, Mark, Jeff, Paige
 5. Next steps:
 - ✓ 1. Follow up with LR team by email to see who else is interested – by 12/11
 - ⊙ 2. schedule and hold organizing meeting to set goals and work plan – by Jan LR meeting
 - ✓ 2. Submit CSE ecological monitoring report for 2011-2012 (send to Terra to post to RT website) – by 12/11 – (12/11: should be coming by 12/18)
2. Jenny:
 - ✓ 1. Confirm with Paula desired deliverables from Understory team: addendum to the monitoring plan with methods for specific species (not just life forms as currently monitored in CSE) – 12/11
3. Evan:
 - ✓ 1. Ask Ed to dig up Pike data on understory; ask for methods used – 12/11
4. Paula:
 - ✓ 1. Share status report on current understory data and methods from LLC team and forests that are collecting abbreviated version of understory data – possibly at the Dec 11 meeting



= Completed



= On track



= Needs attention



= Deferred

Next steps from Nov. LR Meeting

Meeting Date: 11/13/13
Note: all action items due
by next meeting unless
otherwise shown

1. Terra:
 - ✓ 1. Confirm that Paula can attend 12/11 meeting to share understory results
 - ✓ 2. Send Peter FTP site password so he can load movie he wants to show on 11/22
2. Kathie:
 1. Send Terra prescribed fire talking points from outreach focus groups (for use in the letter ET is writing)
3. Greg:
 1. Incorporate feedback from 11/13 team meeting into narrative, note that the process is mostly done by USFS but there are opportunities for other stakeholders to contribute at specific points; add what we'll do in an annual multiparty monitoring assessment. – 12/11
4. Hal:
 1. Estimate acres of PP in CFLR landscape; figure out what watershed boundaries encompass the project area and how many acres that is (use HUC-6, same as Spatial Heterogeneity team) – Jan meeting
5. Peter:
 1. Put on FTP site the movie you want to show at the 11/22 RT



= Completed



= On track

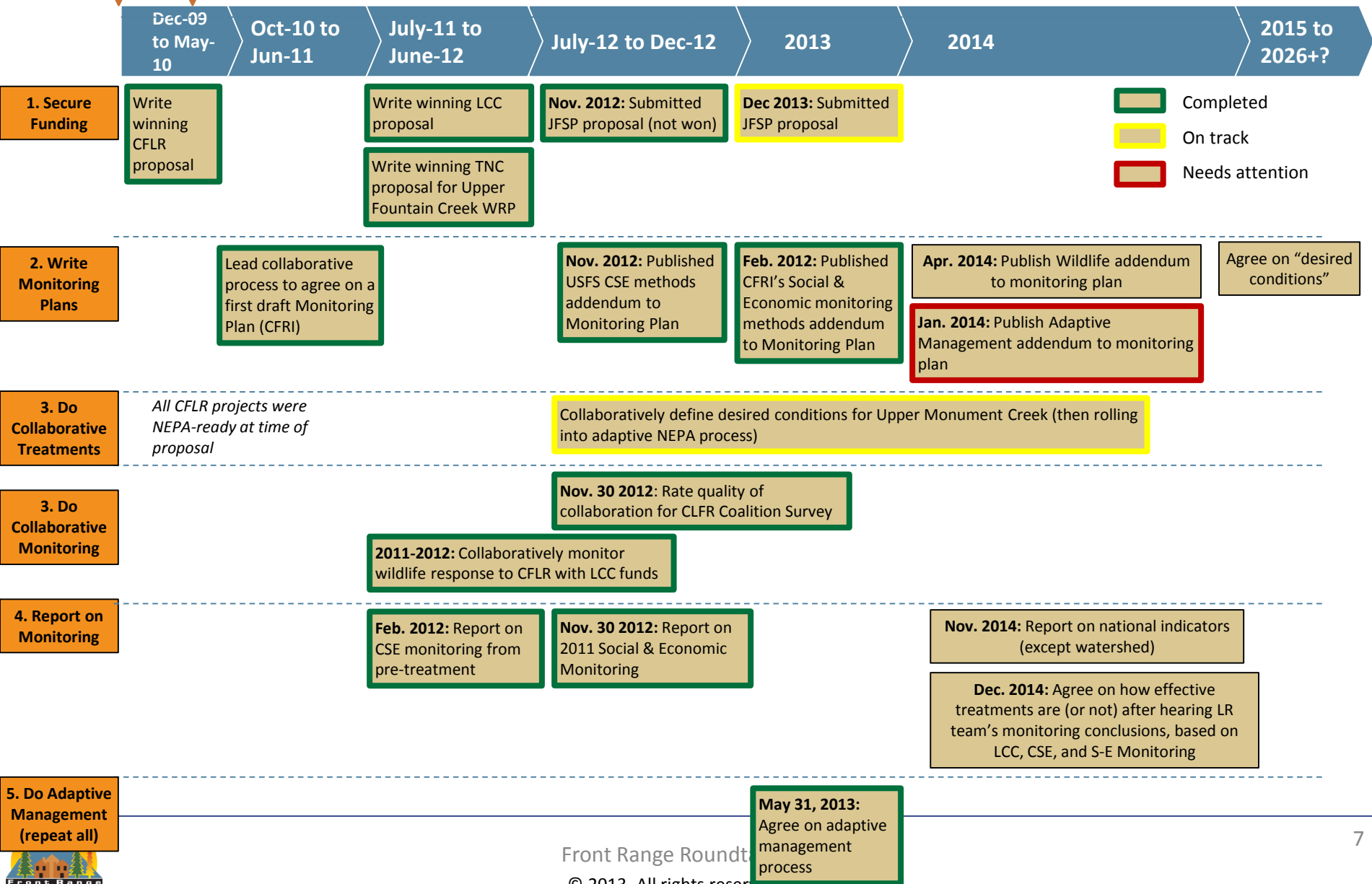


= Needs attention



Front Range CFLRP: High Level Work Plan

Dec. 2009: Proposal written
 May 2010: Proposal awarded



Landscape Restoration Team: Near Term High Level Work Plan

Mar 8, 2013: Q1 Roundtable meeting

May 31, 2013: Q2 Roundtable meeting

Sept 13, 2013: Q3 Roundtable meeting

Nov. 22, 2013: Q4 Roundtable meeting

Jan-Mar, 2013

Apr-Jun, 2013

Jul-Sep, 2013

Oct 2013 – March 2014

Jan. 9, 2013: Report on results from historic reconstruction research at Hall & Heil Ranches

Jan. 9 – Feb. 13, 2013: Agree on recommendations to Roundtable on adaptive management process

Feb 19-20: Hold field trips to Long John & Waldo (UMC)

Feb–May: Plan ARP and PSI field trip sites

March 13: Report on LCC monitoring results

March 13: Report on CSE results

April-Dec: Agree on extent to which CFLR treatments from 2011 and 2012 are on trend towards meeting objectives

April: Review GTR PPT

May - July: Define assumptions and uncertainties in CFLR project

Sept – Oct: Flood and Gov't shutdown

July 9 (AR), & 11 (PSI): Hold field trips to ARP treatment sites

May 31, 2013: Propose recommendations to Roundtable on adaptive management process

April-May: Write more detailed description of adaptive management process

Sept 11: Decide if adaptive management model ready for publishing as addendum to CFLR Monitoring Plan

Nov 13: Devote monthly meeting to national indicators

Nov 13: Report on 2012 social & economic monitoring

Nov. 13: Form a CSE Report sub-team to agree on a standard report and methods

Dec 11: Update from Wildlife team

Jan 15: Report on new LCC Monitoring findings?

Jan 15: Report on spatial heterogeneity

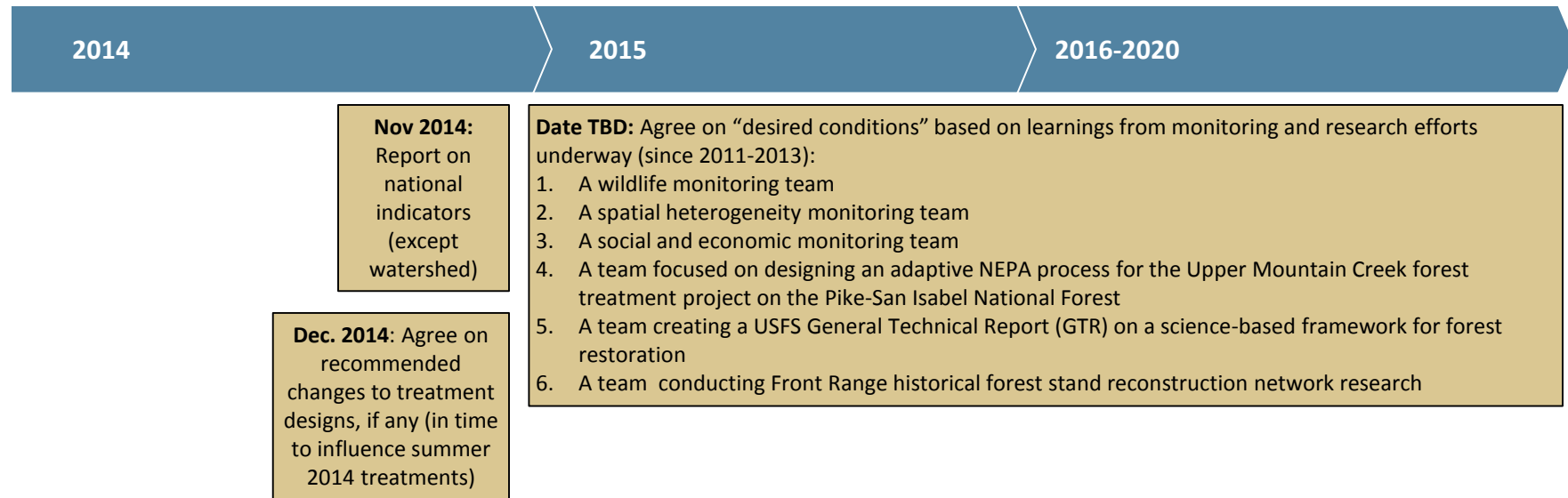
March 2014: Review GTR draft






April-Sept: Apply adaptive management process to UMC

- Deliverable or decision point
- Completed
- On track
- Needs attention
- Tentative



Landscape Restoration Team: Long Term High Level Work Plan



-  Deliverable or decision point
-  Completed
-  On track
-  Needs attention
-  Tentative

Front Range Roundtable, LR & Wildlife Team Calendar - 2014

Team	Event	Location	Location / Call Details	Date	Time
LR	LR Mtg 38	in person	JeffCo Taj Bldg, 100 Jefferson County Pkwy, Golden (1563/64)	Wednesday, December 11, 2013	10 am-3 pm
WWT	Monthly Meeting	in person	USFS Regional Office, 740 Simms St. Golden	Tuesday, December 17, 2013	10 am-3 pm
Roundtable	Roundtable	in person	Colorado Department of Wildlife - Colorado Springs	Friday, January 10, 2014	9-3:30
LR	LR Mtg 39	in person	JeffCo Taj Bldg, 100 Jefferson County Pkwy, Golden (1563/64)	Wednesday, January 23, 2014	10am - 3pm
WWT	Monthly Meeting	in person	USFS Regional Office, 740 Simms St. Golden (Cargill)	Tuesday, January 21, 2014	10am - 3pm
LR	LR Mtg 40	in person	JeffCo Taj Bldg, 100 Jefferson County Pkwy, Golden (1563/64)	Wednesday, February 12, 2014	10am - 3pm
WWT	Monthly Meeting	In person	USFS Regional Office, 740 Simms St. Golden (Cargill)	Tuesday, February 18, 2014	10am - 3pm
LR	LR Mtg 41	In person	JeffCo Taj Bldg, 100 Jefferson County Pkwy, Golden (1563/64)	Wednesday, March 12, 2014	10am - 3pm
WWT	Monthly Meeting	In person	USFS Regional Office, 740 Simms St. Golden (Cargill)	Tuesday, March 18, 2014	10am - 3pm
LR	LR Mtg 42	In person	JeffCo Taj Bldg, 100 Jefferson County Pkwy, Golden (1563/64)	Wednesday, April 9, 2014	10am - 3pm
WWT	Monthly Meeting	In person	USFS Regional Office, 740 Simms St. Golden (Cargill)	Tuesday, April 15, 2014	10am - 3pm
Roundtable	Roundtable	Quarterly Meeting	TBD	Friday, May 9, 2014	9-3:30
LR	LR Mtg 43	In person	JeffCo Taj Bldg, 100 Jefferson County Pkwy, Golden (1563/64)	Wednesday, May 14, 2014	10am - 3pm
WWT	Monthly Meeting	In person	USFS Regional Office, 740 Simms St. Golden (Cargill)	Tuesday, May 20, 2014	10am - 3pm
LR	LR Mtg 44	In person	USFS Regional Office, 740 Simms St. Golden (Pinchot)	Wednesday, June 11, 2014	10am - 3pm
WWT	Monthly Meeting	In person	JeffCo Taj Bldg, 100 Jefferson County Pkwy, Golden (1563/64)	Tuesday, June 17, 2014	10am - 3pm
LR	LR Mtg 45	In person	JeffCo Taj Bldg, 100 Jefferson County Pkwy, Golden (1563/64)	Wednesday, July 9, 2014	10am - 3pm
LR	LR Mtg 46	In person	JeffCo Taj Bldg, 100 Jefferson County Pkwy, Golden (1563/64)	Wednesday, August 13, 2014	10am - 3pm
Roundtable	Roundtable	In person	TBD	Friday, August 29, 2014	9-3:30
LR	LR Mtg 47	In person	USFS Regional Office, 740 Simms St. Golden	Wednesday, September 10, 2014	10am - 3pm
LR	LR Mtg 48	In person	USFS Regional Office, 740 Simms St. Golden	Wednesday, October 8, 2014	10am - 3pm
LR	LR Mtg 49	In person	JeffCo Taj Bldg, 100 Jefferson County Pkwy, Golden (1563/64)	Wednesday, November 12, 2014	10am - 3pm
Roundtable	Roundtable	In person	TBD	Friday, November 14, 2014	9-3:30
LR	LR Mtg 50	In person	JeffCo Taj Bldg, 100 Jefferson County Pkwy, Golden (1563/64)	Wednesday, December 10, 2014	10am - 3pm





Appendix

Meeting 38

Wednesday, December 11, 2013

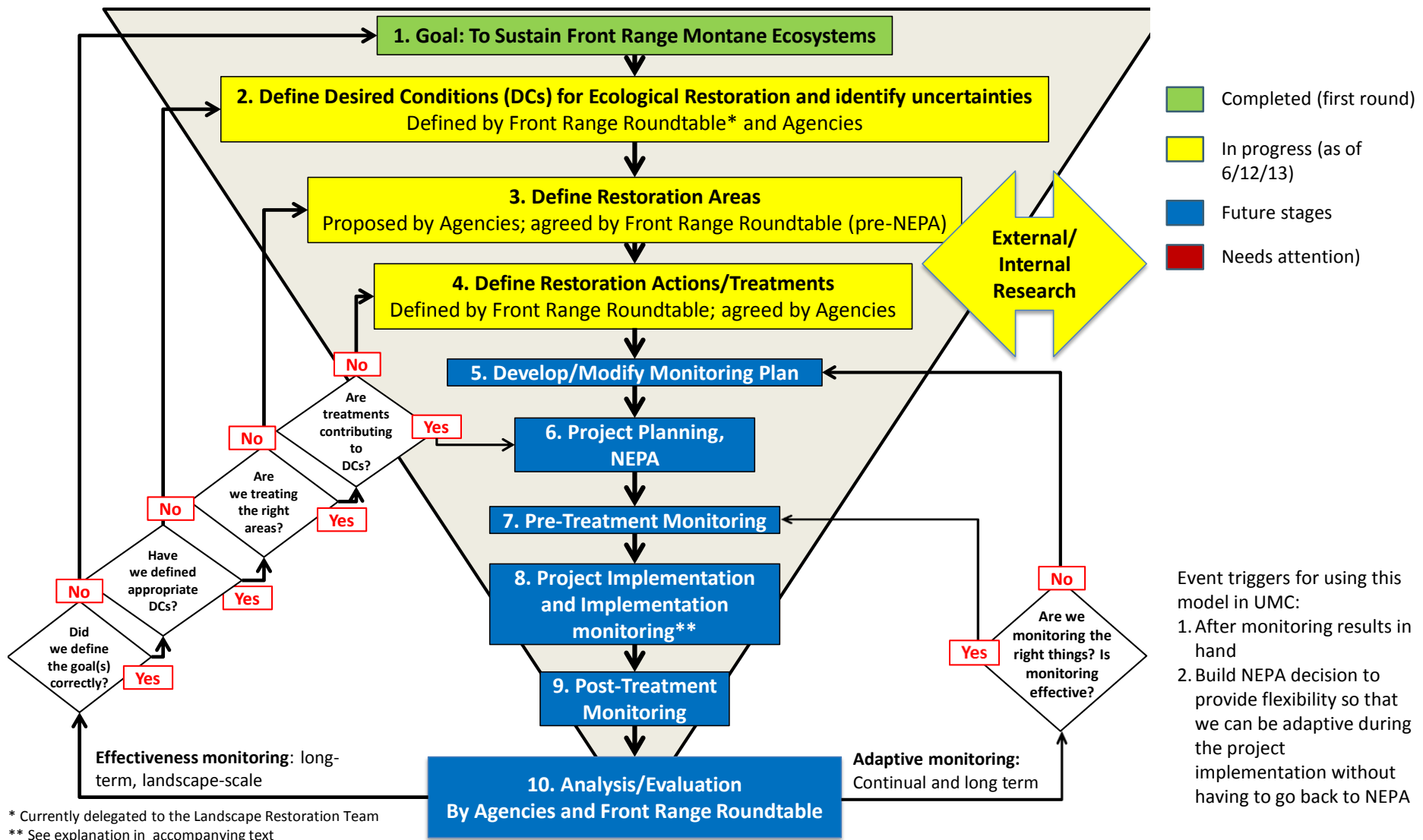
Facilitated by:



Front Range Roundtable

© 2013. All rights reserved.

Adaptive Management Model – In Use with UMC



National Indicators: Invasive species

1. **Desired condition:** Prevent / minimize the spread of invasive species from treatment actions (where areas are invaded, not spread them; where not invaded, not introduce them)
2. **Species:** List from the monitoring plan (12)? Forest service invasive species list?
3. **Monitoring method:**
 1. Pre-treatment: CSE + qualitative assessment compared with invasive species maps from planning;
 2. Post-treatment: CSE + qualitative review by invasive species experts
4. **Variables:**
 1. CSE plots: post-treatment area of invaded species vs. pre-treatment area
 2. Treatments sites that are not CSE plots: post-treatment presence / absence of species on a site
5. **Analysis:**
 1. Assess the vectors that brought the weeds in to the treatment areas that were invaded (e.g., possible vectors: not washing equipment)
 2. Correlation between bare soil immediately post treatment and infestation
 3. Did the forest treat the invasive species?
6. **Questions / Next steps:**
 1. Does the CSE need to be changed?
 2. For CSE, reduce list of 12 species to 10? For expert review; expand to include entire noxious weed list?
7. **Indicator statement:** ____ (%) of the CFLR landscape area was restored by reducing invasive species severity (**preventing**, controlling, or eradicating targeted invasive species) to meet desired conditions by ____ date.
[current invasion is essentially zero %; landscape is ~3 m acres, projects are ~30k acres]
 1. Landscape scale score: Target = NA
 2. Project scale score: Target = 100% (0 additional infestation) by 2025



National Indicators: Fire Regime

1. **Desired condition:**

1. Landscape desired conditions:
 1. Mixed severity fires that trends towards surface fires
 2. Reduce crown fire potential at 90th percentile weather (as modeled in fire behavior models)
 3. Decreased litter and duff
 4. Decreased or similar coarse woody debris
 5. (Fire Regime Condition Class 1)?
2. Project scale desired conditions: Move percent of forests modeling at active crown fire potential from 0.5% to 0.1%; passive crown fire potential from 33.7% to 6%; surface fire potential from 62.6% to 90.7%, and no fire potential stays the same at 3.2%

2. **Monitoring method:**

1. Landscape modeling: Landsum
2. Project scale modeling: FVS

3. **Variables:**

1. CSE plots: overstory trends?
2. Treatments sites that are not CSE plots:

4. **Analysis:**

5. **Questions / Next steps:**

6. **Indicator statement:** ____ change (relative to the desired condition) occurs across ____% of the landscape area by ____ date.

1. Landscape scale score: Target =