

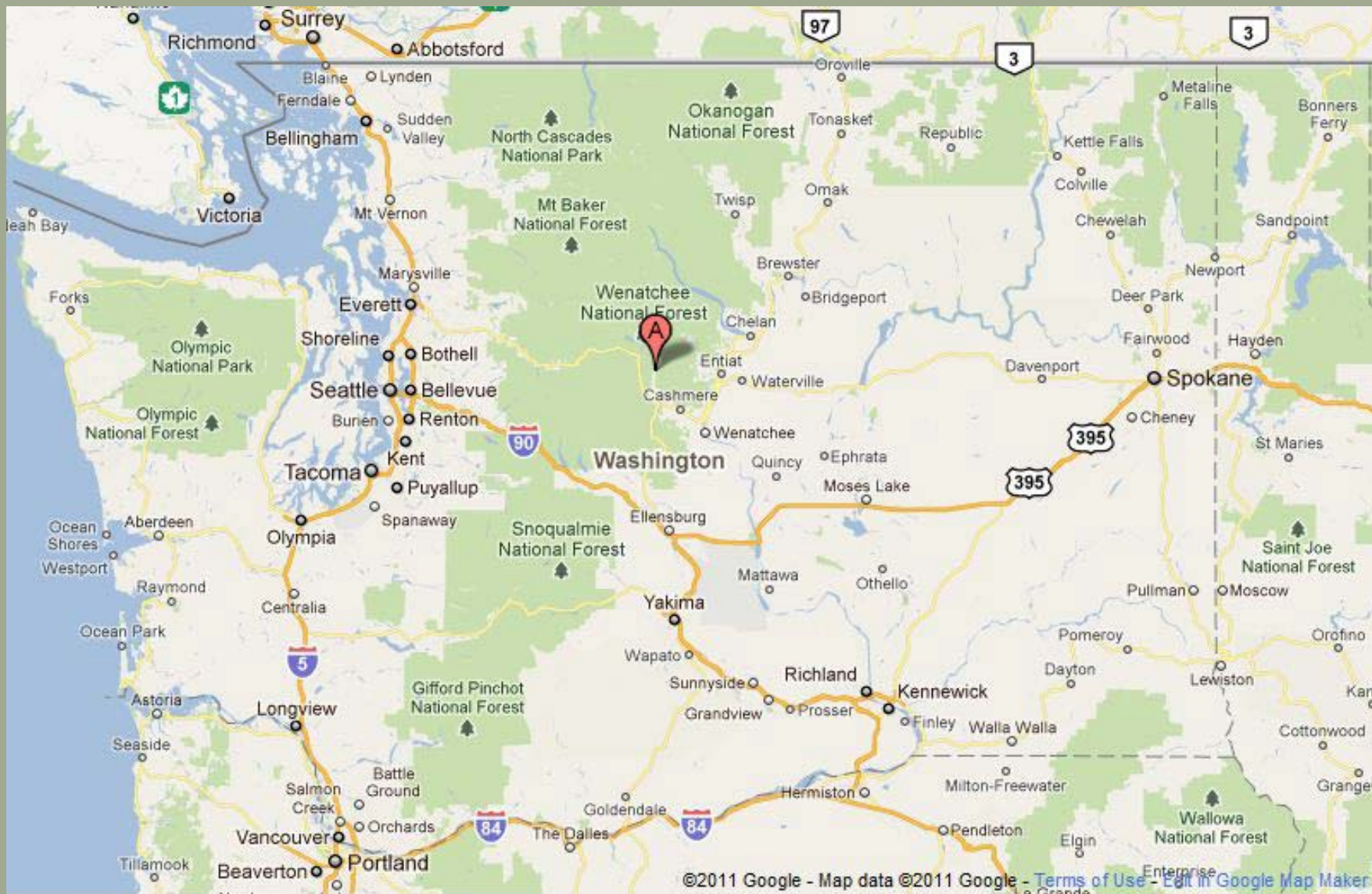


THE HUMAN SIDE OF RESTORATION:

The Care and Feeding of Projectus Implementus

March 4, 2014

The Human Side of Restoration Webinar
Series



Chumstick Hazardous Fuels Reduction Project
Proposed Action
December 15th, 2009

Fuel Treatment with No Harvest

- Prescribed Burn
- Non Commercial Thin
- Fuel Break

Fuel Treatment Includes Harvest

- Thinning with Helicopter Yarding
- Regeneration Harvest with Helicopter Yarding
- Thinning with Skyline Yarding
- Regeneration Harvest with Skyline Yarding
- Thinning with Ground Based Yarding
- Thinning with Summer Ground Based Yarding

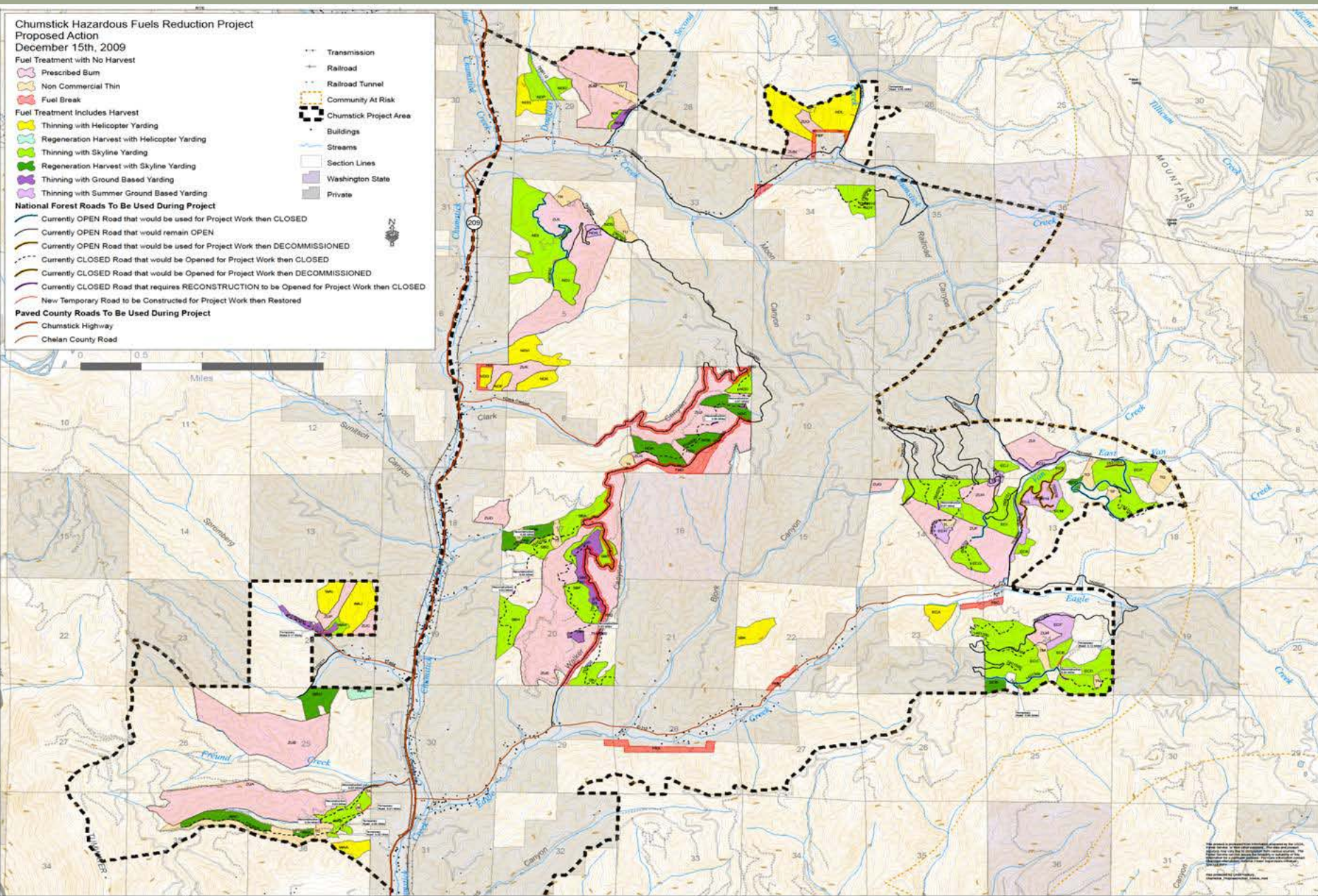
National Forest Roads To Be Used During Project

- Currently OPEN Road that would be used for Project Work then CLOSED
- Currently OPEN Road that would remain OPEN
- Currently OPEN Road that would be used for Project Work then DECOMMISSIONED
- Currently CLOSED Road that would be Opened for Project Work then CLOSED
- Currently CLOSED Road that would be Opened for Project Work then DECOMMISSIONED
- Currently CLOSED Road that requires RECONSTRUCTION to be Opened for Project Work then CLOSED
- New Temporary Road to be Constructed for Project Work then Restored

Paved County Roads To Be Used During Project

- Chumstick Highway
- Cheilan County Road

- Transmission
- Railroad
- Railroad Tunnel
- Community At Risk
- Chumstick Project Area
- Buildings
- Streams
- Section Lines
- Washington State
- Private



Map data derived from USGS National Wetland Inventory, National Hydrography Dataset, and National Digital Data Standard for Topographic Maps. All rights reserved. This map is for informational purposes only and does not constitute a warranty or guarantee of accuracy. The user assumes all liability for any use of this map.



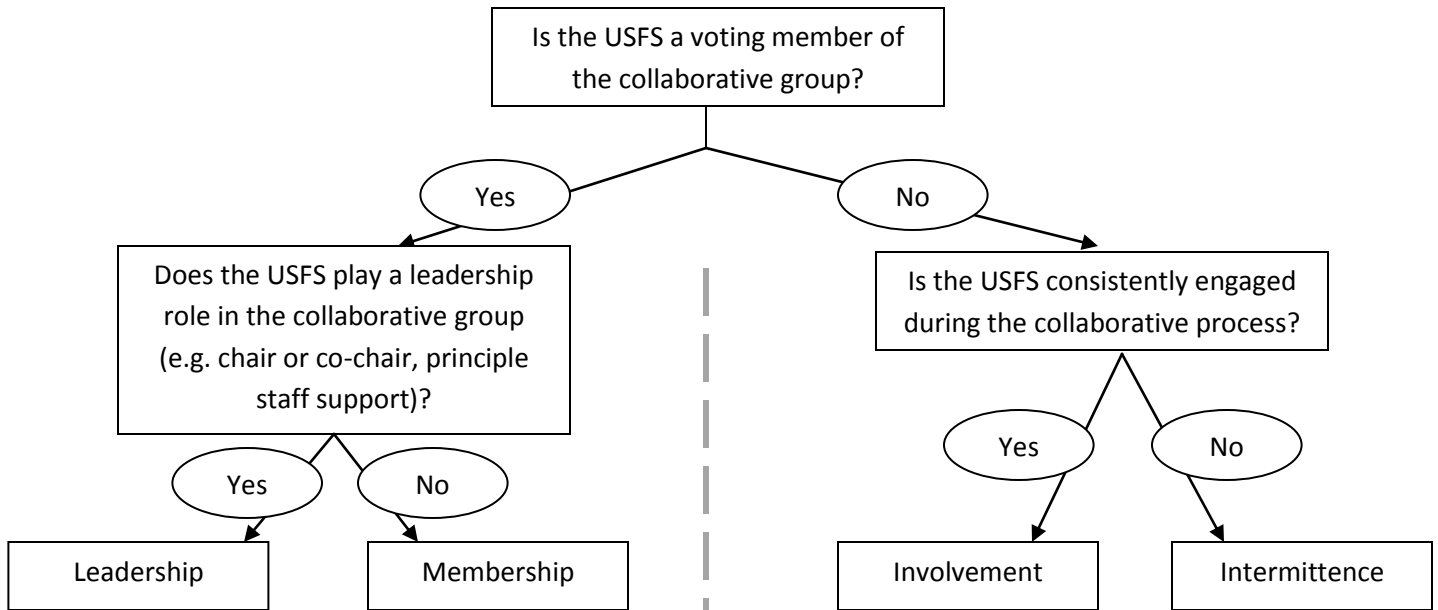
CRITICAL HABITAT

- Engaged and supportive line officer.
- Diverse collaborative participants.
- NEPA- and FACA- fluent communities.

| Collaborative Engagement Model | Procedural Collaboration | | Substantive Collaboration | | FACA Category | Notes |
|--------------------------------|-------------------------------------|-------------------------------------|-------------------------------------|--|---------------|---|
| | USFS in leadership role? | USFS votes? | USFS engaged in dialogue? | USFS inconsistently engaged in dialogue? | | |
| Leadership | <input checked="" type="checkbox"/> | <input checked="" type="checkbox"/> | <input checked="" type="checkbox"/> | | | <ul style="list-style-type: none"> Agency has a voting role and plays a guiding role in the collaborative (e.g. chair or principal staff support). Tensions over role of agency in procedural decisions may erode collaboration. Time and energy directed to procedural issues may constrain time available for dialogue on substantive issues. |
| Membership | | <input checked="" type="checkbox"/> | <input checked="" type="checkbox"/> | | | <ul style="list-style-type: none"> Agency votes or participates in informal, consensus-based, decisionmaking. Time and energy directed to procedural issues may constrain time available for dialogue on substantive issues. |
| Involvement | | | <input checked="" type="checkbox"/> | | FACA-Aware | <ul style="list-style-type: none"> Agency participates in committee work, presentations, and discussions but does not have a role in the decisionmaking body of the collaborative. Collaborative process designed with FACA in mind. Procedurally, collaborative and agency operate in parallel but separate worlds. Benefits of collaboration without procedural distractions. |
| Intermittence | | | | <input checked="" type="checkbox"/> | FACA-Fear | <ul style="list-style-type: none"> Communication may take place between the agency and the collaborative on a one-to-one or as-needed basis. Tensions over lack of agency involvement in substantive issues. |

Summary table based on Butler, William Hale. (2013). Collaboration at Arm's Length: Navigating Agency Engagement in Landscape-Scale Ecological Restoration Collaboratives. *Journal of Forestry*. 111(6): 395-403.

Discussion Points for the Collaborative Working Space



Discussion Points

- How much time is spent on procedural/governance issues as opposed to substantive ones?
- How would the dynamics change if the USFS did not vote? How would the outcomes change?
- Is there another stakeholder with the capacity to lead the group?
- Would the process benefit from a neutral facilitator?
- How do other partners view the role of the USFS in the collaborative? Do these views affect the work of the group?
- How has FACA played a part in your structure? Should it?
- What would it take to shift away from procedural collaboration?
- Is the USFS as deeply engaged on the issues as it is in governance?

Procedural Collaboration

Discussion Points

- How does the USFS view the collaborative group? Are these views a factor in the level of engagement? What would it take to change these views?
- How has FACA played a part in your relationship? Are groups familiar with FACA?
- How often does FACA come up in discussions about how the group should interact?
- How often does the USFS interact with the collaborative group? What methods of interaction are used?
- How would the outcomes change if there was more consistent interaction with the USFS? How would the relationship change?
- Where would the collaborative group like more engagement from the USFS? Less?
- How does the collaborative group view the USFS? What would it take to change those views?

Substantive Collaboration



CARE REQUIREMENTS

- Species requires frequent communication – it is dependant on human interaction.
- Clearly define goals and expectations for long-term care over species lifespan.
- Share the care plan among all caregivers.
- Extra care required in old age.



NUTRIENT NEEDS

- Organizational capacity
- Funding
- Communication
 - Progress reports and success stories
 - Hitches and glitches



SPECIES NOTES

- Species can adapt.
- Long-term study of the species is recommended.
- Species performs best with caregiver support.
- Hungry or neglected Projectus Implementus can be destructive and cause serious damage to their community.
- Help is available.