

Meeting Location: USFS RO, 740 Simms St. Golden, Cargill Room.
Facility Contact: Rick Truex, USFS; (303) 275-5022 work; please be prepared to show ID at security desk.



Landscape Restoration Team— Wildlife Sub-Team

Meeting #10

Tuesday, July 23, 2013, 10:00 – 3:00pm

Facilitated by:



Front Range Roundtable

© 2013. All rights reserved.

Wildlife Team Agenda—Thurs 7/23/13

Topics	Timing
1. Introduction: Ice breaker; review purpose of meeting and today's agenda <ul style="list-style-type: none">a. Icebreaker:b. Mark attendance and mileage on slide 4	10:00 – 10:10
2. Review: <ul style="list-style-type: none">a. Wildlife Team's role/expectations as related to the Landscape Restoration Teams/CFLRPb. Field trips	10:10 – 11:00
3. Updates: <ul style="list-style-type: none">a. Felix: Bats. Flush out our thinking. Decide if and when we consult with bat expertsb. Janelle: invertebrates.c. Lynne: Red-naped sapsuckerd. Rick: edits to justification for dropping amphibians/reptiles; if group accepts will use similar format for otherse. Lynne: Meeting with Yvette/SH Teamf. Lynne: Final report outline	11:00 – 11:30
4. Lunch	11:30 -12:00
5. Discussion: <ul style="list-style-type: none">a. Agree on primary speciesb. Continue rationale on inclusion/exclusion of species. Create assumptions on 10 species.<ul style="list-style-type: none">• Amphibian/reptile rationale as a template• Use Abert's squirrel as the inclusion templatec. Design of Monitoring Plans	12:00 – 2:00
6. Scope: Gali to lead the group in refining our scope.	2:00 – 2:30
7. Calendar (slide 8), work plan (slides 6-7), and next steps: <ul style="list-style-type: none">a. Update work plan for June and July; document homework for next meeting (August 20)	2:30 – 3:00



Roundtable Wildlife Team—Contacts

Full Name	Organization	Division	Title	Address	City	State	Postal Code	Work Phone	Cell Phone	Email1	Membership type
Gali Beh	Beh Management Consulting, Inc.		Front Range Roundtable Facilitator	637-B South Broadway, #134	Boulder	CO	80305	303-499-1576		gali@behconsulting.com	Facilitator
Jenny Briggs	US Geological Survey	Rocky Mountain Geographical Science Center	Research Ecologist	DFC Building 810	Lakewood	CO	80225	303-202-4078		isbriggs@usgs.gov	Core
Casey Cooley	Colorado Division of Parks and Wildlife		Montane/Forest Habitat Coordinator	4255 Sinton Road	Colorado Springs	CO	80907	719-227-5227		Casey.Cooley@state.co.us	Core
Lynne Deibel	US Forest Service, ARP	Arapaho and Roosevelt National Forests and Pawnee National Grassland	Forest Wildlife Biologist	2150 Centre Avenue, Building E	Fort Collins	CO	80526	970-295-6638		lcdeibel@fs.fed.us	Co-Leader
Jonas Feinstein	Natural Resources Conservation Service		State Forester	DFC Building 56	Lakewood	CO	80225	720-544-2839		jonas.feinstein@co.usda.gov	Advisor
Paula Fornwalt	USFS Rocky Mountain Research Station	Rocky Mountain Research Station	Research Ecologist	240 West Prospect Road	Fort Collins	CO	80526	970-498-2581		pfornwalt@fs.fed.us	Advisor
Steve Germaine	US Geological Survey	Fort Collins Science Center	USGGS Ecologist	2150 Centre Ave, Bldg C	Fort Collins	CO	80525	970-226-9107		germaines@usgs.gov	Advisor
Hal Gibbs	US Forest Service, ARP	Arapaho and Roosevelt National Forests and Pawnee National Grassland	Ecosystems Group Leader	2150 Centre Avenue, Building E	Fort Collins	CO	80526	970-295-6630		hdgibbs@fs.fed.us	Core
Summer Grimes	Colorado State University		Student							summer.grimes@gmail.com	
Terra Lenihan	Beh Management Consulting, Inc.		Front Range Roundtable Coordinator	637-B South Broadway, #134	Boulder	CO	80305	303-499-1576		terra@behconsulting.com	Coordinator
Liba Pejchar	Colorado State University	Fish, Wildlife, and Conservation Biology Dept.	Assistant Professor							liba.pejchar@colostate.edu	Advisor
Felix Quesada	US Forest Service, PSICC	Pikes Peak Ranger District	Wildlife Biologist	601 S. Weber Street	Colorado Springs	CO	80903	719-477-4207		fquesada@fs.fed.us	Core
Claudia Regan	US Forest Service-Region 2	Region 2	Regional Vegetation Ecologist	740 Simms	Golden	CO	80401	303-275-5004		cregan@fs.fed.us	Advisor
Richard (Rick) Truex	US Forest Service	Region 2	Regional Wildlife Ecologist	740 Simms	Golden	CO	80401	303-275-5022		rtruex@fs.fed.us	Co-Leader
Janelle Valladares	US Forest Service, PSICC	Pike & San Isabel National Forests, Cimarron & Comanche National Grasslands		2840 Kachina Drive	Pueblo	CO	81008	719-663-1618		jvalladares@fs.fed.us	Core
Mike Welker	US Forest Service	Pike-San Isabel National Forests						719-553-1515		mtwelker@fs.fed.us	Advisor

Roundtable Wildlife Team—Attendance (1 Way Mileage)

Full Name	Attended 11/13/12 Meeting (Ft. Collins)	Attended 12/18/12 Meeting (Lake-wood)	Attended 1/22/13 Meeting (Lake-wood)	Attended 2/21/13 Meeting (phone)	Attended 3/19/13 Meeting	Attended 4/23/13 Meeting	Attended 05/08/13 meeting	Attended 06/18/13 Meeting	RSVP 7/23/13 Meeting	RSVP 8/20/13 Meeting	RSVP 9/17/13 Meeting	RSVP 10/22/13 Meeting	RSVP 11/19/13 Meeting	RSVP 12/17/13 Meeting
Gali Beh	Yes (phone)	Yes (30)	Yes (30)	Yes	Yes (30)	Yes	No	Yes (30)	Yes					
Jenny Briggs	Yes	Yes (2)	Yes (2)	No	Yes (5)	Yes	Yes (5)	No	Tentative					
Casey Cooley	Yes (120)	Yes (65)	Yes (65)	Yes	Yes (0)	Yes	Yes (65)	Yes (70)	Yes					
Lynne Deibel	Yes (0)	Yes	Yes	Yes	Yes (70)	Yes	Yes (70)	Yes (70)	Yes					
Jonas Feinstein	Yes (0)	No	No	No	No	No	No	No	No					
Paula Fornwalt	Yes (1)	No	No	No	No	No	No	No	No					
Steve Germaine	Yes (0)	No	Yes (phone)	Yes	Yes (phone)	No	Yes	Yes	No					
Hal Gibbs	Yes (0)	No	Yes (70)	No	Yes (0)	Yes	No	No	No					
Summer Grimes	No	No	No	Yes (joined team)	Yes (70)	Yes (+ Courtney Schultz)	Yes (70)	Yes (70)	Yes					
Terra Lenihan	No	Yes (15)	Yes (15)	No (left team)	No	No	No	Yes (15)	Yes					
Liba Pejchar	No	No	No	No	No	No	No	No	No					
Felix Quesada	Yes (VTC)	Yes	Yes	Yes	Yes (0)	Yes	Yes (75)	Yes	Yes					
Claudia Regan	Yes (15)	Phone	No	No	No	No	No	No	No					
Richard (Rick) Truex	Yes (75)	Yes (5)	Yes (5)	Yes	Yes (0)	Yes	Yes	Yes	Yes					
Janelle Valladares	Yes (VTC)	No	Yes (117)	Yes	Yes (117)	No	Yes (117)	No	Yes					
Mike Welker	Yes (VTC)	No	No	No	No	No	No	No	No					



Roundtable Wildlife Team—Project Outline

Team Rick & Lynne
 Roundtable Wildlife Team to edit by
 may meeting

Prioritize an abridged list of species to monitor for the CFLRP Monitoring Plan, predict population trends for each target species if forest restoration is achieved, and recommend data collection and monitoring methods for each target species given funding constraints and monitoring methods available.

Deliverables

A final report building from existing CFLRP monitoring plan and including:

1. Overview of field protocols, sampling approaches, and potential analytical approaches
2. Options: balancing rigorous monitoring of 1° species and casual monitoring of 2° species
3. Wildlife Team’s recommendations: based on funding, rigor, public interest

Timeline

Team Launched Nov. 13, 2012; will complete work by February of 2014.

Goals

1. Identify primary and secondary species for monitoring that meet CFLRP and FS needs
2. Develop hypothesized species response (≈ population trends) for each 1° and 2° species
3. Explicitly integrate spatial and temporal scales in species selection and sampling approach
4. Establish range of monitoring options that encompass cost and rigor spectrums as needed
5. Identify field sampling protocols for selected species
6. Describe potential analytical methods
7. Identify opportunities for collaborating entities to contribute to monitoring implementation

Scope

1. **Focus:** past efforts have focused on vegetation structure and assumptions that if we do good things for structure, the wildlife will benefit. This effort will focus on the need for wildlife monitoring, informed by but not dependent upon desired conditions for vegetation
2. **Species:** Open to including any species; will consult list of species from 2011 CFLRP Monitoring Plan but we will not be limited by the past plan
3. **Scale:** Will include both landscape scale and site scale considerations in recommending monitoring methods and estimating expected outcomes; we will need to define “landscape” as well, possibly by species (will refer to language developed by other related efforts to define restoration and desired conditions) – Rick to edit
4. **Methods:** Will consider the best, most effective, and efficient monitoring methods; will not be constrained by the USFS’s Common Stand Exam or currently available funding. We will only recommend monitoring species with existing established or emerging monitoring protocols—we will not invent new protocols. If preliminary protocols don’t already exist for a species, that species will not be included in the monitoring recommendations.
5. **Places:** Recommended wildlife sampling will be within the CFLRP project area (both on and off treatment sites) and will not be constrained by Common Stand Exam (CSE) monitoring plots.

Why this / why now?

1. In the past, CFLRP monitoring has focused on vegetation structure with the assumption that if we do what is right for the forest, then we’re doing what is right for the wildlife. We need to test this assumption to see if it is true. Monitoring wildlife is the only way to know if this assumption is correct. Sometimes there are struggles between fuels reduction for fire risk mitigation and restoration for habitats for species. The impact of this struggle is that sometimes forest planners want to pick up every piece of litter and duff to reduce fire risk but this does not restore wildlife habitats. Downed woody debris plays an important role for wildlife habitat restoration. Treatments may increase forage for elk but they may reduce forage for songbirds, so we need to decide for which species we’re restoring habitats and what impacts we expect forest restoration to have on them.
2. Wildlife monitoring has historically been de-prioritized in USFS budgets. It’s costly and difficult. There is not as much public demand for this as for other resource objectives. Statutes are not clear on what is required to monitor populations in a rigorous manner. It will be a cultural shift for the USFS to start focusing on wildlife monitoring as well as vegetation monitoring. Few groups have spent time thinking these issues through. The USFS has always reacted to legal suits rather than be proactive to do the hard thinking on if and how to do wildlife monitoring.
3. The Roundtable wants to monitor wildlife use pre- and post-treatment to learn if what we’re doing has any beneficial or detrimental effects to wildlife. A team of representative stakeholders is needed to arrive at the compromises necessary to do wildlife monitoring effectively and cost-efficiently.



Roundtable Wildlife Team—High Level Work Plan (Page 1 of 2)

Roundtable Quarterly meeting: 11/30/12

Roundtable Quarterly meeting: 3/8/13

Roundtable Quarterly meeting: 5/31/13



Nov 2012	Dec	Jan 2013	Feb	Mar	Apr	May	June	July	Aug
<p>Revise proposed team goals, deliverables, timeframe, scope (RT)</p> <p>Summarize from CFLR proposal: what restoration is, expected vegetation trends, and wildlife monitoring intentions (HG) – need to post (TL)</p> <p>Schedule calendar for team (GB)</p> <p>Check in with Sara on team composition (LD) – Glenn spoke to Susan, no go w/USFWS</p> <p>Check in with Craig & Leslie on capacity (JB) - None</p>	<p>Agree on / finalize team goals, deliverables, timeframe, scope, mission</p> <p>Make list of criteria for how to prioritize species for monitoring (RT)</p> <p>Send team existing list of Front Range Lower & Upper Montane species (CC)</p> <p>Ask CDPW's Kenny Kamire, USFS Denny Bohan what other fish species to add to list (CC)</p> <p>Ask Mike Welker about importance of including fish (FQ) – more towards habitat than population monitoring</p>	<p>Check in with prior effort leaders to learn their methods for species list; also get sources (Craig, Tonya, Ken, Janelle) (LD) – checked in Jan, will check in once more</p> <p>Create spreadsheet matrix with criteria and species (RT)</p> <p>Review Casey's list and bring to 1/22 mtg adding: reptiles (LC), amphibians (LD); fish (JV), birds (CC), mammals (JB), pollinators (CC), inverts (FQ)</p> <p>Propose additional species to add to list</p> <p>Start rating each species by criteria (spreadsheet), add descriptive information; divvy up further research to fill gaps</p> <p>Present plan to LR team on 1/9 (RT+ CC)</p>	<p>Do research to fill in gaps from criteria spreadsheet: R&A (LD); inverts - add as per Felix's paper (JV); mam (FQ), birds (CC: need info, JB: a-l, SG: m-z)</p> <p>Review new research and complete filling in matrix of species and criteria; try to filter species to smaller list that meet the most criteria (or justified for single purpose)</p>	<p>Document more detail and rationale on species groupings (RT) – by EOD 2/26</p> <p>Team provides feedback to RT (cc team) by email (EOD 3/1)</p> <p>Finalize guidance (RT) - by EOD 3/5</p> <p>Review existing ratings and revise based on Feb. discussion & new guidance: R&A (LD); inverts [done]; mam (FQ + CC), birds (SG) – by 3/12</p> <p>At mtg (3/19): (1) recap species list + do first filter²; launch discussions of (2) spatial and temporal scales, (3) which species need what type of monitoring, (4) expected population responses</p>	<p>By 3/22, send links to team to guide them to field sampling protocols (RT)</p> <p>Share draft deliverables with LR team on 4/10</p> <p>Update political scores for all birds on list based on species watch lists, then reapply Filter 1 Rule (RT)</p> <p>Rank all fish on list by three criteria, apply Filter 1 Rule1 to choose which fish to further research (JV, with MW)</p> <p>Discuss (1) potential stressors, (2) redundancy within guilds, (3) why filtered species are ecologically informative, and (4) hypotheses on population responses</p> <p>Help on Jenny's scat photos</p> <p>Check active mine programs for bat data (CC)</p> <p>Track down CNHP report on pawnee montane skipper monitoring (RT)</p> <p>By 4/23, conduct research to prepare for Filter 2: for each species that passed Filter 1, (1) do field sampling protocols exist? If so, what are they? (2) Is there any current monitoring effort or available data being collected that can be leveraged? [R&A (LD – on track); inverts and fish (JV – on track); mammals (FQ + JB – on track), birds (CC + SG)</p>	<p>Hold meeting w/ Steve & sub-team to review our classifications of birds, Add other bird lists if any missing (Finished 5/20) (CC , LD-send doodle)</p> <p>Review respective forest watch lists to see if any species not scored correctly (LD and FQ)</p> <p>Research roles in ecosystems and, taxonomic group, other areas to nominate a primary species from each group [Tree squirrels (FQ+JV), nocturnal owls (CC+SG), raptors (CC+SG)]</p> <p>Write rationale for dropping REPTILES & AMPH (LD)</p> <p>Hold "work day:" with agenda (1) review/refine notes on classifications/gut reactions, (2) Agree on primary/secondary: Tree squirrels, nocturnal owls, raptors; also review R&A write up filter within taxonomic groups and across groups, (3) expected population responses → filter to top species within groups to keep on possible monitoring list</p> <p>Present draft results to Roundtable 5/31</p> <p>Research other mammal groups for May (JB)</p>	<p>Research: "Else" birds, Ungulates, Carnivores, Bats in order to recommend carrying forward</p> <p>Agree on primary/secondary: woodpeckers</p>	<p>Attend LR team field trips: 7/9 (AR) & 7/11 (PSI)</p> <p>Continue rationale on inclusion/exclusion of species. Create assumptions for 10 species.</p> <p>Flush out reasoning on bats. Decide if/when to talk to experts.</p>	

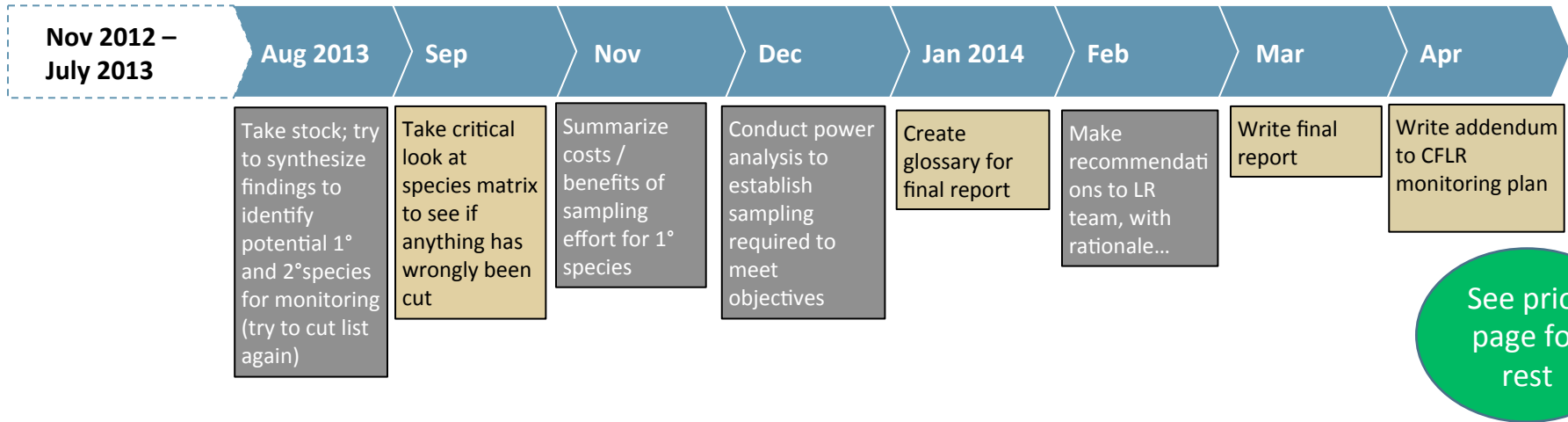
See next page for rest

- Between meetings
- During meetings
- Completed
- On track
- Needs attention
- Tentative






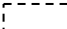
Make list of experts to ask for broad (early) or specific (later) help : Doug Krieger, CDPW, big game experts (CC) ia scores ≥ 3 AND biology score ≥ 2"



Roundtable Wildlife Team—High Level Work Plan (Page 2 of 2)



Seek more funding or capacity to conduct research (CSU current funder)

-  Between meetings
-  During meetings
-  Completed
-  On track
-  Needs attention
-  Tentative



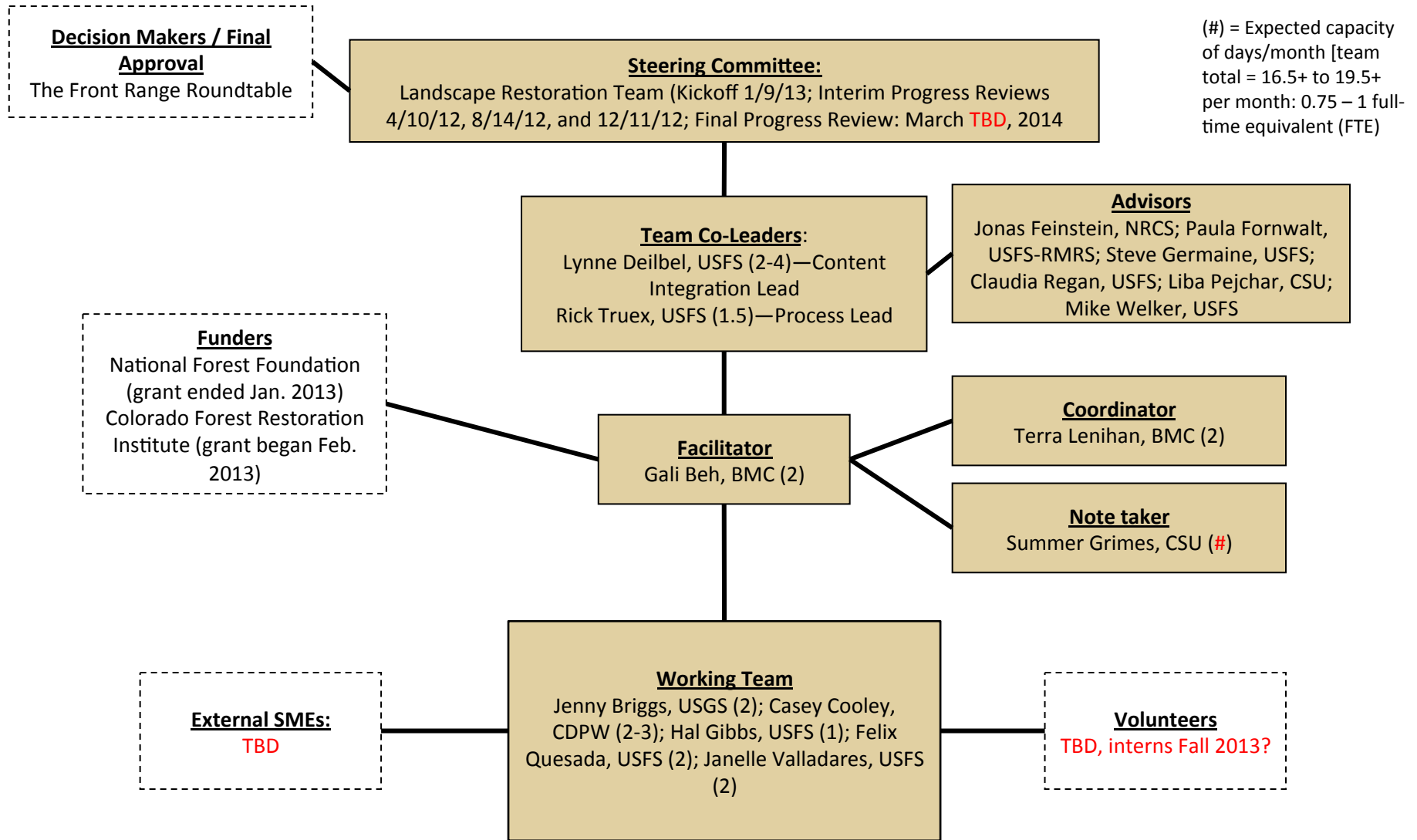
Remaining 2013 Front Range Roundtable, LR & Wildlife Team Calendar

Red = changes

Team	Event	Location	Location / Call Details	Date	Time
Wildlife	Monthly Meeting	in person	USFS Regional Office, 740 Simms St. Golden	Tuesday, April 23, 2013	10 am -3 pm
LR	LR Mtg 31	in person	USFWS offices, 134 Union Boulevard, Lakewood, 80228	Wednesday, May 8, 2013	10 am-3 pm
Wildlife	Monthly Meeting	in person	USFS Regional Office, 740 Simms St. Golden (Cargill room)	Thursday, May 30, 2013 (Gali out)	10 am -3 pm
RT	Q2 RT Meeting	in person	Boulder	Friday, May 31, 2013	9:30 – 3:30
LR	LR Mtg 32	in person	USFWS offices, 134 Union Boulevard, Lakewood, 80228	Wednesday, June 12, 2013	10 am-3 pm
Wildlife	Monthly Meeting	in person	USFS Regional Office, 740 Simms St. Golden	Tuesday, June 18, 2013	10 am -3 pm
LR & Wildlife	Field Trip – AR	In person		Tuesday, July 9, 2012	8am – 5pm
LR & Wildlife	Field Trip – PSI	In person		Thursday, July 11, 2012	8am – 5pm
Wildlife & Spatial Heterogeneity Team	Monthly Meeting	in person	USFS Regional Office, 740 Simms St. Golden	Tuesday, July 23, 2013	10 am-3 pm
LR	LR Mtg 34	in person	USFWS offices, 134 Union Boulevard, Lakewood, 80228	Wednesday, August 14, 2013	10 am-3 pm
Wildlife	Monthly Meeting	in person	USFS Regional Office, 740 Simms St. Golden	Tuesday, August 20, 2013	10 am-3 pm
LR	LR Mtg 35	in person	USFWS offices, 134 Union Boulevard, Lakewood, 80228	Wednesday, September 11, 2013	10 am-3 pm
RT	Q3 RT Meeting	in person	TBD	Friday, September 13, 2013	9:30 – 3:30
Wildlife	Monthly Meeting	in person	USFS Regional Office, 740 Simms St. Golden	Tuesday, September 17, 2013	10 am-3 pm
LR	LR Mtg 36	in person	USFWS offices, 134 Union Boulevard, Lakewood, 80228	Wednesday, October 9, 2013	10 am-3 pm
Wildlife	Monthly Meeting	in person	USFS Regional Office, 740 Simms St. Golden	Tuesday, October 22, 2013	10 am-3 pm
LR	LR Mtg 37	in person	USFWS offices, 134 Union Boulevard, Lakewood, 80228	Wednesday, November 13, 2013	10 am-3 pm
Wildlife	Monthly Meeting	in person	USFS Regional Office, 740 Simms St. Golden	Tuesday, November 19, 2013	10 am-3 pm
RT	Q4 RT Meeting	in person	TBD	Friday, November 22, 2013	9:30 – 3:30
LR	LR Mtg 38	in person	USFWS offices, 134 Union Boulevard, Lakewood, 80228	Wednesday, December 11, 2013	10 am-3 pm
Wildlife	Monthly Meeting	in person	USFS Regional Office, 740 Simms St. Golden	Tuesday, December 17, 2013	10 am-3 pm



Roundtable Wildlife Team Organizational Chart



Suggested Team Responsibilities

Steering Committee

- Agree on project methodology and approve final deliverables
- Attend progress reviews; review pre-reads beforehand
- Help solve problems, remove obstacles, make resources available as needed

Co-Leaders

- Introduce the project to the organization and ask everyone to help as needed
- Be ultimately responsible for the project's quality
- Be main point of contact for steering committee and Project Manager

Facilitator & Coordinator

- Be ultimately responsible for the project's progress
- Be main point of contact for working team
- Create and maintain project plan
- Facilitate team meetings and progress reviews
- Provide document management system for deliverables and research
- Limit project scope in order to manage budget and deadlines as needed

Working Team

- Contribute to development of project plan; follow through on commitments to project roles and activities
- Guide the working team's research and hold decision-making authority in their areas of expertise
- Conduct internal and external interviews and case studies; synthesize findings
- Create progress review materials and final deliverables
- Attend monthly team meetings