

Meeting Location: USFS RO, 740 Simms St. Golden, Cargill Room.
Facility Contact: Rick Truex, USFS; (303) 275-5022 work; please be prepared to show ID at security desk.



Landscape Restoration Team— Wildlife Sub-Team

Meeting #11

Tuesday, August 20, 2013, 9:00 am – 4:00pm

Facilitated by:



Front Range Roundtable

© 2013. All rights reserved.

Wildlife Team Agenda—Tues 8/20/13

Topics	Timing
1. Introduction: Ice breaker; review purpose of meeting and today's agenda <ol style="list-style-type: none">IcebreakerMark attendance and mileage on slide 4	9:00-9:10 am
2. CFLR Field Trip Recommendations: Discuss Wildlife Team's recommendations for 9/13 Roundtable meeting (See LR team's recommendations and add confidential feedback)	9:10-9:40 am
3. Writing Group 3: Update	9:40-10:00 am
4. Science Group 2: Project monitoring and experimental design	10:00-11:00 am
5. Methods Group 1: Species Protocols available & highlights, survey locations/spatial level, GIS/other support needs	11:00-11:40 am
6. Moving forward discussion/lunch	11:40-12:10 pm
7. Break out/ working groups	12:10-2:40 pm
8. Group report out	2:40-3:40 pm
9. Calendar (slide 8), work plan (slides 6-7), and next steps: <ol style="list-style-type: none">Update work plan for September; document homework for next meeting (September 17)	3:40-4:00 pm



Roundtable Wildlife Team—Contacts

Full Name	Organization	Division	Title	Address	City	State	Postal Code	Work Phone	Cell Phone	Email1	Membership type
Gali Beh	Beh Management Consulting, Inc.		Front Range Roundtable Facilitator	637-B South Broadway, #134	Boulder	CO	80305	303-499-1576		gali@behconsulting.com	Facilitator
Jenny Briggs	US Geological Survey	Rocky Mountain Geographical Science Center	Research Ecologist	DFC Building 810	Lakewood	CO	80225	303-202-4078		isbriggs@usgs.gov	Core
Casey Cooley	Colorado Division of Parks and Wildlife		Montane/Forest Habitat Coordinator	4255 Sinton Road	Colorado Springs	CO	80907	719-227-5227		Casey.Cooley@state.co.us	Core
Lynne Deibel	US Forest Service, ARP	Arapaho and Roosevelt National Forests and Pawnee National Grassland	Forest Wildlife Biologist	2150 Centre Avenue, Building E	Fort Collins	CO	80526	970-295-6638		lcdeibel@fs.fed.us	Co-Leader
Jonas Feinstein	Natural Resources Conservation Service		State Forester	DFC Building 56	Lakewood	CO	80225	720-544-2839		jonas.feinstein@co.usda.gov	Advisor
Paula Fornwalt	USFS Rocky Mountain Research Station	Rocky Mountain Research Station	Research Ecologist	240 West Prospect Road	Fort Collins	CO	80526	970-498-2581		pfornwalt@fs.fed.us	Advisor
Steve Germaine	US Geological Survey	Fort Collins Science Center	USGGS Ecologist	2150 Centre Ave, Bldg C	Fort Collins	CO	80525	970-226-9107		germaines@usgs.gov	Advisor
Hal Gibbs	US Forest Service, ARP	Arapaho and Roosevelt National Forests and Pawnee National Grassland	Ecosystems Group Leader	2150 Centre Avenue, Building E	Fort Collins	CO	80526	970-295-6630		hdgibbs@fs.fed.us	Core
Summer Grimes	Colorado State University		Student							summer.grimes@gmail.com	
Terra Lenihan	Beh Management Consulting, Inc.		Front Range Roundtable Coordinator	637-B South Broadway, #134	Boulder	CO	80305	303-499-1576		terra@behconsulting.com	Coordinator
Liba Pejchar	Colorado State University	Fish, Wildlife, and Conservation Biology Dept.	Assistant Professor							liba.pejchar@colostate.edu	Advisor
Felix Quesada	US Forest Service, PSICC	Pikes Peak Ranger District	Wildlife Biologist	601 S. Weber Street	Colorado Springs	CO	80903	719-477-4207		fquesada@fs.fed.us	Core
Claudia Regan	US Forest Service-Region 2	Region 2	Regional Vegetation Ecologist	740 Simms	Golden	CO	80401	303-275-5004		cregan@fs.fed.us	Advisor
Richard (Rick) Truex	US Forest Service	Region 2	Regional Wildlife Ecologist	740 Simms	Golden	CO	80401	303-275-5022		rtruex@fs.fed.us	Co-Leader
Janelle Valladares	US Forest Service, PSICC	Pike & San Isabel National Forests, Cimarron & Comanche National Grasslands		2840 Kachina Drive	Pueblo	CO	81008	719-663-1618		jvalladares@fs.fed.us	Core
Mike Welker	US Forest Service	Pike-San Isabel National Forests						719-553-1515		mtwelker@fs.fed.us	Advisor

Roundtable Wildlife Team—Attendance (1 Way Mileage)

Full Name	Attended 11/13/12 Meeting (Ft. Collins)	Attended 12/18/12 Meeting (Lake-wood)	Attended 1/22/13 Meeting (Lake-wood)	Attended 2/21/13 Meeting (phone)	Attended 3/19/13 Meeting	Attended 4/23/13 Meeting	Attended 05/08/13 meeting	Attended 06/18/13 Meeting	RSVP 7/23/13 Meeting	RSVP 8/20/13 Meeting	RSVP 9/17/13 Meeting	RSVP 10/22/13 Meeting	RSVP 11/19/13 Meeting	RSVP 12/17/13 Meeting
Gali Beh	Yes (phone)	Yes (30)	Yes (30)	Yes	Yes (30)	Yes	No	Yes (30)	Yes	Yes				
Jenny Briggs	Yes	Yes (2)	Yes (2)	No	Yes (5)	Yes	Yes (5)	No	Tentative	Yes				
Casey Cooley	Yes (120)	Yes (65)	Yes (65)	Yes	Yes (0)	Yes	Yes (65)	Yes (70)	Yes	Yes				
Lynne Deibel	Yes (0)	Yes	Yes	Yes	Yes (70)	Yes	Yes (70)	Yes (70)	Yes	Yes				
Jonas Feinstein	Yes (0)	No	No	No	No	No	No	No	No					
Paula Fornwalt	Yes (1)	No	No	No	No	No	No	No	No					
Steve Germaine	Yes (0)	No	Yes (phone)	Yes	Yes (phone)	No	Yes	Yes	No	Yes				
Hal Gibbs	Yes (0)	No	Yes (70)	No	Yes (0)	Yes	No	No	No					
Summer Grimes	No	No	No	Yes (joined team)	Yes (70)	Yes (+ Courtney Schultz)	Yes (70)	Yes (70)	Yes	Yes				
Terra Lenihan	No	Yes (15)	Yes (15)	No (left team)	No	No	No	Yes (15)	Yes	Yes				
Liba Pejchar	No	No	No	No	No	No	No	No	No					
Felix Quesada	Yes (VTC)	Yes	Yes	Yes	Yes (0)	Yes	Yes (75)	Yes	Yes	Yes				
Claudia Regan	Yes (15)	Phone	No	No	No	No	No	No	No					
Richard (Rick) Truex	Yes (75)	Yes (5)	Yes (5)	Yes	Yes (0)	Yes	Yes	Yes	Yes	Yes				
Janelle Valladares	Yes (VTC)	No	Yes (117)	Yes	Yes (117)	No	Yes (117)	No	Yes	No				
Mike Welker	Yes (VTC)	No	No	No	No	No	No	No	No					



Roundtable Wildlife Team—Project Outline

Team Rick & Lynne
 Roundtable Wildlife Team to edit by
 may meeting

Prioritize an abridged list of species to monitor for the CFLRP Monitoring Plan, predict population trends for each target species if forest restoration is achieved, and recommend data collection and monitoring methods for each target species given funding constraints and monitoring methods available.

Deliverables

A final report building from existing CFLRP monitoring plan and including:

1. Overview of field protocols, sampling approaches, and potential analytical approaches
2. Options: balancing rigorous monitoring of 1° species and casual monitoring of 2° species
3. Wildlife Team’s recommendations: based on funding, rigor, public interest

Timeline

Team Launched Nov. 13, 2012; will complete work by February of 2014.

Goals

1. Identify primary and secondary species for monitoring that meet CFLRP and FS needs
2. Develop hypothesized species response (≈ population trends) for each 1° and 2° species
3. Explicitly integrate spatial and temporal scales in species selection and sampling approach
4. Establish range of monitoring options that encompass cost and rigor spectrums as needed
5. Identify field sampling protocols for selected species
6. Describe potential analytical methods
7. Identify opportunities for collaborating entities to contribute to monitoring implementation

Scope

1. **Focus:** past efforts have focused on vegetation structure and assumptions that if we do good things for structure, the wildlife will benefit. This effort will focus on the need for wildlife monitoring, informed by but not dependent upon desired conditions for vegetation
2. **Species:** Open to including any species; will consult list of species from 2011 CFLRP Monitoring Plan but we will not be limited by the past plan
3. **Scale:** Will include both landscape scale and site scale considerations in recommending monitoring methods and estimating expected outcomes; we will need to define “landscape” as well, possibly by species (will refer to language developed by other related efforts to define restoration and desired conditions) – Rick to edit
4. **Methods:** Will consider the best, most effective, and efficient monitoring methods; will not be constrained by the USFS’s Common Stand Exam or currently available funding. We will only recommend monitoring species with existing established or emerging monitoring protocols—we will not invent new protocols. If preliminary protocols don’t already exist for a species, that species will not be included in the monitoring recommendations.
5. **Places:** Recommended wildlife sampling will be within the CFLRP project area (both on and off treatment sites) and will not be constrained by Common Stand Exam (CSE) monitoring plots.

Why this / why now?

1. In the past, CFLRP monitoring has focused on vegetation structure with the assumption that if we do what is right for the forest, then we’re doing what is right for the wildlife. We need to test this assumption to see if it is true. Monitoring wildlife is the only way to know if this assumption is correct. Sometimes there are struggles between fuels reduction for fire risk mitigation and restoration for habitats for species. The impact of this struggle is that sometimes forest planners want to pick up every piece of litter and duff to reduce fire risk but this does not restore wildlife habitats. Downed woody debris plays an important role for wildlife habitat restoration. Treatments may increase forage for elk but they may reduce forage for songbirds, so we need to decide for which species we’re restoring habitats and what impacts we expect forest restoration to have on them.
2. Wildlife monitoring has historically been de-prioritized in USFS budgets. It’s costly and difficult. There is not as much public demand for this as for other resource objectives. Statutes are not clear on what is required to monitor populations in a rigorous manner. It will be a cultural shift for the USFS to start focusing on wildlife monitoring as well as vegetation monitoring. Few groups have spent time thinking these issues through. The USFS has always reacted to legal suits rather than be proactive to do the hard thinking on if and how to do wildlife monitoring.
3. The Roundtable wants to monitor wildlife use pre- and post-treatment to learn if what we’re doing has any beneficial or detrimental effects to wildlife. A team of representative stakeholders is needed to arrive at the compromises necessary to do wildlife monitoring effectively and cost-efficiently.



Feedback on CFLR Field Trips – What We Appreciated

Field Trips

1. Field trips were exceptionally well planned and executed (thanks to Dick and Jeff and their teams)
2. Materials that accompanied the field trip, including detailed prescription information, also Dave Haddis seeking feedback and input on the prescriptions, team members going back to refer to prescriptions after the field trip (2x)
3. Liked the temporal progression demonstrated of what we used to do, what we learned, what we changed in response
4. Good turnout at both trips from LR team and Wildlife team – everyone has other jobs and still showed up. Showed how important you think what we do is. (2x)
5. Having contract administrators there to explain what their doing on the ground – like taking someone out to see your artwork for the first time, the Cas were very professional, courteous, appreciative of feedback. Implementers very open to feedback and discussion, very brave thing to do by foresters to show us their work (3x)

CFLR Implementation

6. Implementers definitely thinking about landscape context, e.g., enlarging meadows, treating ridgetops, north/south facing slope²
7. Looked great – overall, wonderful to see amount of openings and changes in stand structures, and diversity of the structure that is being created. (2x)
8. Pleased by outcome of 1/3, 1/3, 1/3 effort on the AR – visual response, came out pretty nice, achieved what we were looking for out (5x)
9. Liked the clumpiness of catamount with openings on ridge tops, felt like we're getting at landscape scale with denser north facing slopes and more open south facing slopes
10. Good question raised by AR silviculturalist: what are the functional characteristics of a clump? We need to flesh this out more from wildlife vs. timber perspective.
11. **So far we seem to be trending towards desired conditions as far as stand and landscape structure** (but unknown about wildlife and understory and fire behavior). We do not appear to be going backwards or in the wrong direction from a landscape scale perspective.

Hal or Peter
will present to
RT on 9/13



Feedback on Field Trips – Requested Changes: Field Trips

Before Field Trips

1. Before field trips: Take aerial photos of treatments we're going to see before we get out there, so that we can reference the broader landscape from where we're standing (especially for discussing clumpiness) – at minimum have aerial photo of pre-treatment, if possible post-treatment too – not to be used for analysis but for reference. Hard to visualize from looking at stumps what the site looked like before. Does CSE do photo points?
2. Need to be armed with some evaluative criteria about questions we need to answer rather than “show and tell” – e.g., do we think as a group that this treatment is getting at the kind of clumpiness that we want to see here? Make a sheet like the ID team uses that needs to be filled out before people get in cars to go home. Get sample of qualitative assessment from TNC led trip to Egland AFB.

During Field Trips

3. Need to build in more time for discussion and balance against desire to “hit all stops”
4. Trying to show as many areas as possibly can to show variety of different things, and we never got to be able to go a little further in an area to see a little more of the whole picture – should we look at fewer areas and see more of one area? Photos would help, bringing poster size photos. Have more field trips in general, but they take too much prep time to do more field trips.
5. USFS agency people uncomfortable giving feedback, didn't feel it was their place to provide critical comments – this needs to change, we need a culture of honest exchange of civil discourse. In the USFS, the discussion occurs, then the line manager weighs the discussion and makes the decision. It is not viewed positively for someone after the fact to criticize the decision. At the field trip, the USFS employees should feel comfortable making comments or coming back later with feedback. The Roundtable forum may feel like too much of a public setting.

After Field Trips

6. Do visualizations / virtual tours / panoramas of demonstration areas that we like and places we don't like (field crew currently working on this for Long John) – also do panoramas before treatment for comparison (easier than aerial imagery)
7. Establish landscape metrics of areas we like and areas we don't like
8. Team members must be open to GIVING feedback (in appropriate forums) – give honest feedback at the trip and after



Feedback on Field Trips – Requested Changes: CFLR Implementation

1. Want to see even more openings and less thinning – is it a waste to thin somewhere when you can be opening elsewhere?
2. Want More snags and downed woody debris, possibly consider girdling trees to create snags (for wildlife habitat) –less of an issue in the AR due to beetle kill
3. Surprised by amount of soil disturbance (e.g. Red Feather 2 but also generally in both forests)
4. Red Feather 2 – disappointed to see that a nice old tree in a clump of denser patches, surrounded by dog hair, that would have been a nice tree to have as an individual tree, not part of a dense patch; also an old tree had been cut, it had four fire scars on it (living tree) – more emphasis should be put on working around / enhancing older trees to protect them by thinning around them and to not cut them.
5. Saw campground, power line areas with “clumps” that didn’t seem like clumps, seemed more fuels driven by power lines, trees were 30 ft tall without interlocking crowns, didn’t seem like a clump which would be more relatively dense. Clump should have shrubs under the PIPO.
6. Need more discussion about benefits of designation by prescription vs. leave tree marking vs. integrated marking teams. Contractor prefers leave tree marking. DBP leaves too much judgment in hands of contractors. (AR is planning this discussion already). Consider integrated marking teams, identify important character trees. Instead of going out afterwards to say “that doesn’t look good” why aren’t we ahead of this by participating on the ID teams?
7. Jury still out on leave tree marking – the aesthetics of the paint on the trees, how long it will last, who will we tick off that we need on our side? Using water based paint, should be gone in 5 – 7 years, might be able to mitigate on areas of high visibility by painting over with brown paint. Want to see monitoring that the paint truly is gone in 5 – 7 years. Need research on what the public thinks.



Feedback on Field Trips – Lingering Questions: CFLR Implementation

1. Jury still out on how the leave tree areas were identified, seemed to be associated with inoperable ground (e.g., rock outcroppings) – are we biasing the landscape such that dense clumps are only in rocky places and does that have long term implications for ecology of the system. Some evidence that rocky places were historically dense, so this may be an ecologically appropriate action.
2. Maybe relic of logistics of field trip but seemed like a lot of work being done by roads, can restoration be achieved if it's always by roads? Without full sweep of treatments esp in landscapes with rough terrain and limited access, unlikely to achieve all objectives with mechanized treatment and service work – will prescribed fire ever be possible? If we want biomass removal, we need to be near roads, and we can't build any more roads (roadless rules).
3. Prescribed fire: major constraints against us using fire – unrealistic given current climate – just not going to happen. Big societal barriers – public doesn't like it, smoke regulatory issues, can only burn 100 acres / day for smoke requirements, so it's expensive to treat a 500 acre site. But if we don't burn, we're not likely going to affect fire behavior. Are we having any effect on the Landscape scale or are we just running around doing things that aren't going to have any effect on the local scale or the landscape scale. If there are regulatory, policy, or conception constraints, we need to work to change them. Forests are either going to burn in a wildlife or in a condition that we have a little more control over (prescribed fire). Prescribed fire is one way to deal with all the seedlings and saplings, one of the less expensive ways. We treat the operable ground that we can get to with mechanical treatments as anchor points around polygons where we can do prescribed fire in between. The point is that to continue talking about prescribed fire as just something that is going to start happening is unrealistic. We have to really work on it as a Roundtable. It will take a seismic change in regulations to move forward. Societal problems are less than the regulatory problems. It's ridiculous to put fire fighters in the position of possibly being killed in a wildfire (not protecting homes or infrastructure). We need to push for regulatory change a lot more. This isn't a problem we can solve by ourselves or even at the state level. There is a role for congress here, changing rules or providing incentives for resource managers. At least PF should be discussed and planned for as part of the landscape perspective. That's what we're doing with UMC, plugging it in to the NEPA process and try to make it happen, by being selective on where to apply it.
4. Question on if 1/3, 1/3, 1/3 follows environmental gradients or is more arbitrary – does the proportion vary depending on topography, moisture? Always want to emphasize variation across the landscape. Maybe need 2/3, 1/3, etc. in some areas.
5. Need to keep in mind that we're not trying to achieve every objective on every acre out there. There are going to be some things that individual people won't like because we're trying to achieve certain objectives (e.g., removing old trees to mitigate bark beetle risks). Also mistakes happen due to human factor, can't prevent all mistakes. In prescriptions, we should outline what are the top priorities, second priority, etc. (e.g., fuels, bark beetle, wildlife, etc.) so that we're all on the same page. Should we not call everything restoration if it's more fuels driven? Have the honest conversation about the needs out there. Not everything is restoration, you have misconceptions if you try to group it all under one box. Restoration is the new buzzword; now there is concern about credibility – there are other types of restoration besides ecological (social and economical)



Roundtable Wildlife Team—High Level Work Plan (Page 1 of 2)

Roundtable Quarterly meeting: 11/30/12

Roundtable Quarterly meeting: 3/8/13

Roundtable Quarterly meeting: 5/31/13



Nov 2012	Dec	Jan 2013	Feb	Mar	Apr	May	June	July	Aug
<p>Revise proposed team goals, deliverables, timeframe, scope (RT)</p> <p>Summarize from CFLR proposal: what restoration is, expected vegetation trends, and wildlife monitoring intentions (HG) – need to post (TL)</p> <p>Schedule calendar for team (GB)</p> <p>Check in with Sara on team composition (LD) – Glenn spoke to Susan, no go w/USFWS</p> <p>Check in with Craig & Leslie on capacity (JB) - None</p>	<p>Agree on / finalize team goals, deliverables, timeframe, scope, mission</p> <p>Make list of criteria for how to prioritize species for monitoring (RT)</p> <p>Send team existing list of Front Range Lower & Upper Montane species (CC)</p> <p>Ask CDPW's Kenny Kamire, USFS Denny Bohan what other fish species to add to list (CC)</p> <p>Ask Mike Welker about importance of including fish (FQ) – more towards habitat than population monitoring</p>	<p>Check in with prior effort leaders to learn their methods for species list; also get sources (Craig, Tonya, Ken, Janelle) (LD) – checked in Jan, will check in once more</p> <p>Create spreadsheet matrix with criteria and species (RT)</p> <p>Review Casey's list and bring to 1/22 mtg adding: reptiles (LC), amphibians (LD); fish (JV), birds (CC), mammals (JB), pollinators (CC), inverts (FQ)</p> <p>Propose additional species to add to list</p> <p>Start rating each species by criteria (spreadsheet), add descriptive information; divvy up further research to fill gaps</p> <p>Present plan to LR team on 1/9 (RT+ CC)</p>	<p>Do research to fill in gaps from criteria spreadsheet: R&A (LD); inverts - add as per Felix's paper (JV); mam (FQ), birds (CC: need info, JB: a-l, SG: m-z)</p> <p>Review new research and complete filling in matrix of species and criteria; try to filter species to smaller list that meet the most criteria (or justified for single purpose)</p>	<p>Document more detail and rationale on species groupings (RT) – by EOD 2/26</p> <p>Team provides feedback to RT (cc team) by email (EOD 3/1)</p> <p>Finalize guidance (RT) - by EOD 3/5</p> <p>Review existing ratings and revise based on Feb. discussion & new guidance: R&A (LD); inverts [done]; mam (FQ + CC), birds (SG) – by 3/12</p> <p>At mtg (3/19): (1) recap species list + do first filter²; launch discussions of (2) spatial and temporal scales, (3) which species need what type of monitoring, (4) expected population responses</p>	<p>By 3/22, send links to team to guide them to field sampling protocols (RT)</p> <p>Share draft deliverables with LR team on 4/10</p> <p>Update political scores for all birds on list based on species watch lists, then reapply Filter 1 Rule (RT)</p> <p>Rank all fish on list by three criteria, apply Filter 1 Rule1 to choose which fish to further research (JV, with MW)</p> <p>Discuss (1) potential stressors, (2) redundancy within guilds, (3) why filtered species are ecologically informative, and (4) hypotheses on population responses</p> <p>Help on Jenny's scat photos</p> <p>Check active mine programs for bat data (CC)</p> <p>Track down CNHP report on pawnee montane skipper monitoring (RT)</p>	<p>Hold meeting w/ Steve & sub-team to review our classifications of birds, Add other bird lists if any missing (Finished 5/20) (CC, LD-send doodle)</p> <p>Review respective forest watch lists to see if any species not scored correctly (LD and FQ)</p> <p>Research roles in ecosystems and, taxonomic group, other areas to nominate a primary species from each group [Tree squirrels (FQ+JV), nocturnal owls (CC+SG), raptors (CC+SG)]</p> <p>Write rationale for dropping REPTILES & AMPH (LD)</p> <p>Hold "work day:" with agenda (1) review/refine notes on classifications/gut reactions, (2) Agree on primary/secondary: Tree squirrels, nocturnal owls, raptors; also review R&A write up filter within taxonomic groups and across groups, (3) expected population responses → filter to top species within groups to keep on possible monitoring list</p> <p>Present draft results to Roundtable 5/31</p> <p>Research other mammal groups for May (JB)</p> <p>By 4/23, conduct research to prepare for Filter 2: for each species that passed Filter 1, (1) do field sampling protocols exist? If so, what are they? (2) Is there any current monitoring effort or available data being collected that can be leveraged? [R&A (LD – on track); inverts and fish (JV – on track); mammals (FQ + JB – on track), birds (CC + SG)</p>	<p>Research: "Else" birds, Ungulates, Carnivores, Bats in order to recommend carrying forward</p> <p>Agree on primary/secondary: woodpeckers</p>	<p>Attend LR team field trips: 7/9 (AR) & 7/11 (PSI)</p> <p>Continue rationale on inclusion/exclusion of species. Create assumptions for 10 species.</p> <p>Flush out reasoning on bats. Decide if/when to talk to experts.</p>	<p>Break out into three "working" groups: See next page</p> <p>Write up rationale on inclusion/exclusion of species</p>

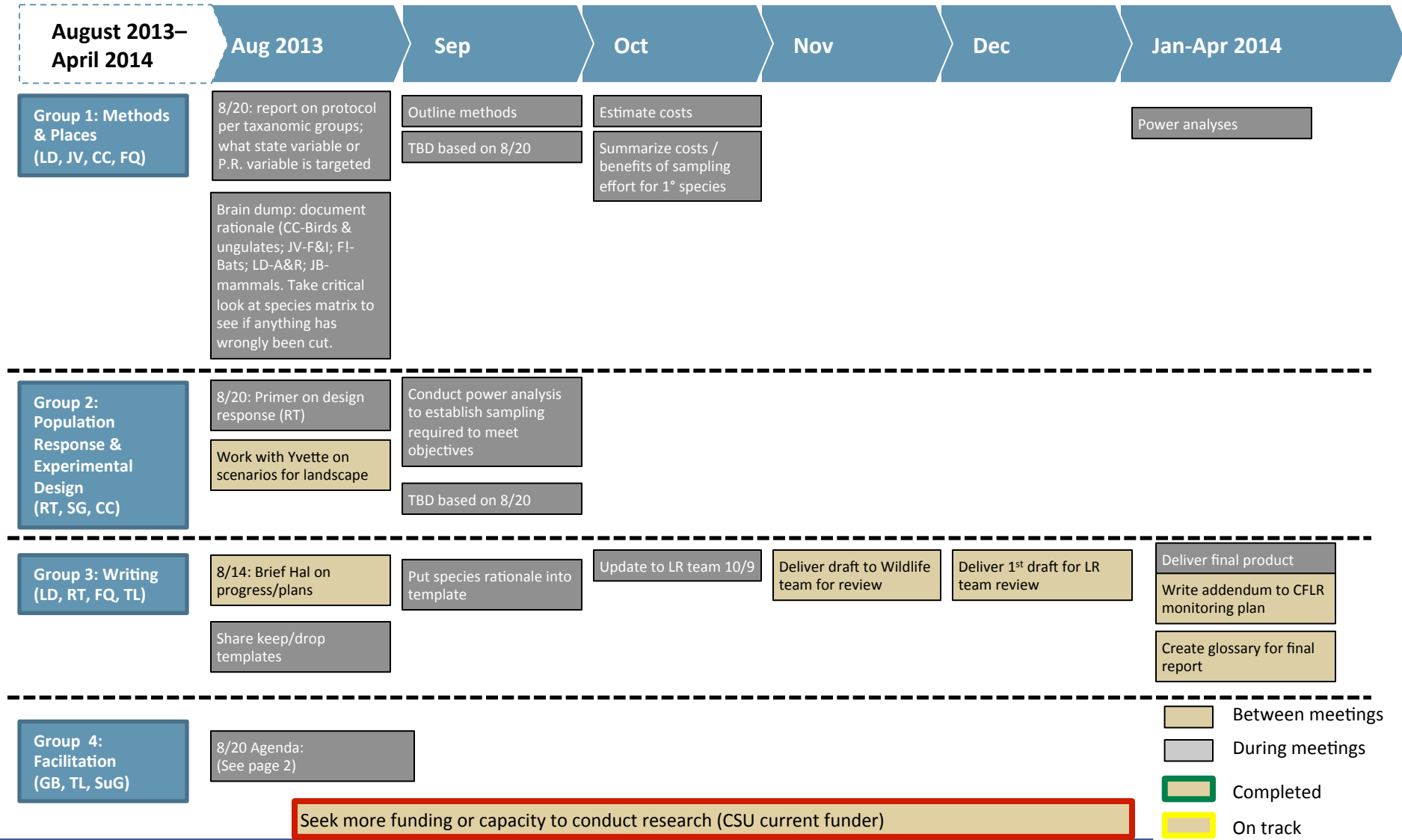
See next page for rest

- Between meetings
- During meetings
- Completed
- On track
- Needs attention
- Tentative

Make list of experts to ask for broad (early) or specific (later) help : Doug Krieger, CDPW, big game experts (CC) ia scores ≥ 3 AND ology score ≥ 2"



Roundtable Wildlife Team—High Level Work Plan (Page 2 of 2)



- Between meetings
- During meetings
- Completed
- On track
- Needs attention
- Tentative



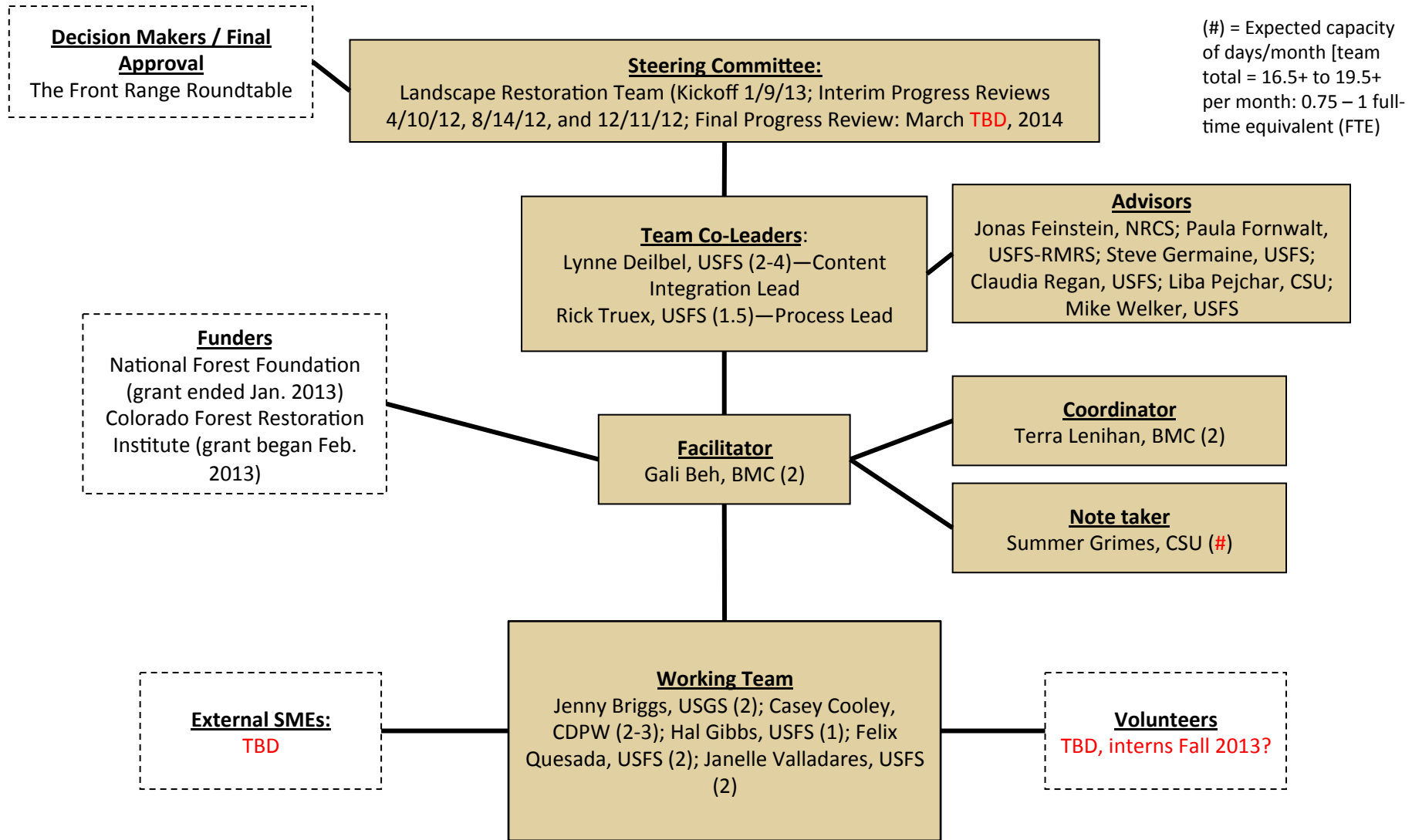
Remaining 2013 Front Range Roundtable, LR & Wildlife Team Calendar

Red = changes

Team	Event	Location	Location / Call Details	Date	Time
Wildlife	Monthly Meeting	in person	USFS Regional Office, 740 Simms St. Golden	Tuesday, April 23, 2013	10 am -3 pm
LR	LR Mtg 31	in person	USFWS offices, 134 Union Boulevard, Lakewood, 80228	Wednesday, May 8, 2013	10 am-3 pm
Wildlife	Monthly Meeting	in person	USFS Regional Office, 740 Simms St. Golden (Cargill room)	Thursday, May 30, 2013 (Gali out)	10 am -3 pm
RT	Q2 RT Meeting	in person	Boulder	Friday, May 31, 2013	9:30 – 3:30
LR	LR Mtg 32	in person	USFWS offices, 134 Union Boulevard, Lakewood, 80228	Wednesday, June 12, 2013	10 am-3 pm
Wildlife	Monthly Meeting	in person	USFS Regional Office, 740 Simms St. Golden	Tuesday, June 18, 2013	10 am -3 pm
LR & Wildlife	Field Trip – AR	In person		Tuesday, July 9, 2012	8am – 5pm
LR & Wildlife	Field Trip – PSI	In person		Thursday, July 11, 2012	8am – 5pm
Wildlife & Spatial Heterogeneity Team	Monthly Meeting	in person	USFS Regional Office, 740 Simms St. Golden	Tuesday, July 23, 2013	10 am-3 pm
LR	LR Mtg 34	in person	USFWS offices, 134 Union Boulevard, Lakewood, 80228	Wednesday, August 14, 2013	10 am-3 pm
Wildlife	Monthly Meeting	in person	USFS Regional Office, 740 Simms St. Golden	Tuesday, August 20, 2013	9 am-4 pm
LR	LR Mtg 35	in person	USFWS offices, 134 Union Boulevard, Lakewood, 80228	Wednesday, September 11, 2013	10 am-3 pm
RT	Q3 RT Meeting	in person	TBD	Friday, September 13, 2013	9:30 – 3:30
Wildlife	Monthly Meeting	in person	USFS Regional Office, 740 Simms St. Golden	Tuesday, September 17, 2013	10 am-3 pm
LR	LR Mtg 36	in person	USFWS offices, 134 Union Boulevard, Lakewood, 80228	Wednesday, October 9, 2013	10 am-3 pm
Wildlife	Monthly Meeting	in person	USFS Regional Office, 740 Simms St. Golden	Tuesday, October 22, 2013	10 am-3 pm
LR	LR Mtg 37	in person	USFWS offices, 134 Union Boulevard, Lakewood, 80228	Wednesday, November 13, 2013	10 am-3 pm
Wildlife	Monthly Meeting	in person	USFS Regional Office, 740 Simms St. Golden	Tuesday, November 19, 2013	10 am-3 pm
RT	Q4 RT Meeting	in person	TBD	Friday, November 22, 2013	9:30 – 3:30
LR	LR Mtg 38	in person	USFWS offices, 134 Union Boulevard, Lakewood, 80228	Wednesday, December 11, 2013	10 am-3 pm
Wildlife	Monthly Meeting	in person	USFS Regional Office, 740 Simms St. Golden	Tuesday, December 17, 2013	10 am-3 pm



Roundtable Wildlife Team Organizational Chart



Suggested Team Responsibilities

Steering Committee

- Agree on project methodology and approve final deliverables
- Attend progress reviews; review pre-reads beforehand
- Help solve problems, remove obstacles, make resources available as needed

Co-Leaders

- Introduce the project to the organization and ask everyone to help as needed
- Be ultimately responsible for the project's quality
- Be main point of contact for steering committee and Project Manager

Facilitator & Coordinator

- Be ultimately responsible for the project's progress
- Be main point of contact for working team
- Create and maintain project plan
- Facilitate team meetings and progress reviews
- Provide document management system for deliverables and research
- Limit project scope in order to manage budget and deadlines as needed

Working Team

- Contribute to development of project plan; follow through on commitments to project roles and activities
- Guide the working team's research and hold decision-making authority in their areas of expertise
- Conduct internal and external interviews and case studies; synthesize findings
- Create progress review materials and final deliverables
- Attend monthly team meetings