



Executive Team Meeting

April 2013

Facilitated by:



Front Range Roundtable

© 2012. All rights reserved.

Today's Agenda

9:00 – 9:30: Review outcomes from 1/31 Executive Team meeting and 3/8 Roundtable meeting, including new initiatives/action items that Roundtable members volunteered to take on

- Update on status of pulling together USFS long term and landscape scale treatment plans to inform the Roundtable 40 year vision planning initiative (Glenn & Jerri)

9:30 – 10:00: Discuss the progress of the Community Protection team (Megan will lead)

10:00 – 10:30: Plan agenda for upcoming 5/31 Roundtable meeting (to be held in Boulder); current agenda items include:

- The Landscape Restoration team has asked for a chunk of time on that day to propose its adaptive management model, update on progress by the Wildlife team, and generally get the Roundtable up to date on the CFLRP Monitoring activities and results
- USFS long term and landscape scale treatment plans to inform the Roundtable 40 year vision planning initiative

10:30 – 11:00 Housekeeping:

- Report on fundraising (Carol) and expenses (Gali) – **Carol to email reports, M,P&C to meet off line to divvy up f/r responsibilities**
- Discuss membership – invite new CSFS Forester? – **Glenn & Jeri to invite Mike Lester**
- Review remaining 2013 calendar: Roundtable & ET meetings (can we move our 7/12 ET meeting to the morning to that Sallie can join us?)



Front Range Roundtable 2013-2015 Goals

Executive Team

1. Annually fundraise at least \$50,000
2. Plan and execute quarterly Roundtable meetings and agendas
3. Respond to letter of support requests as needed

Community Protection (CP) Team [draft goals]

4. The community protection team will serve as a communication, networking, and information exchange among professionals working on community wildfire protection, wildfire mitigation, and private landowner education.
5. Increase stakeholder involvement in the Community Protection Team and devote one of the four larger Roundtable meetings each year to community protection issues.

Biomass Utilization and Slash Sites (BUSS) Team

6. Share information on a monthly basis and by email about biomass utilization developments across the Front Range (via monthly calls)

Landscape Restoration (LR) Team

7. Serve as the Front Range CFLR project multi-party monitoring group
8. Develop an adaptive management process and recommendations
9. Revise the June 2011 CFLR monitoring plan (through addendums until funding identified for a re-write)

Wildlife Team

10. By Spring 2014, recommend a wildlife monitoring plan for the CFLRP by prioritizing an abridged list of species to monitor, hypothesizing expected post-treatment population trends for each target species, and proposing data collection and monitoring methods for each target species, with budgets

40 Year Treatment Plan

11. Goal still to be defined (starting with review of USFS long terms treatment plans at May 31 meeting; then possibly refine priority acres, based on feasibility [slope, access], other consideration of other forest types, such as mixed conifer)

Prescribed Fire Initiative

12. Goal still to be defined (starting with checking in with prescribed fire council)

Policy Initiative

13. Goal still to be defined (Community Protection team will brainstorm ideas)

Implementation initiatives

14. Work with a community to develop a project plan and attract funding for a turn-key project in a priority landscapes
15. Update the Front Range 10-County map of completed treatments



= Top priority

Front Range Roundtable

= If capacity allows

© 2012. All rights reserved.

Next Steps from January 31 ET Call

1. The new Roundtable initiative to do “large scale planning for future treatments to meet the Roundtable’s 40 year vision:” **Glenn** and **Jeri** will speak to their respective staffs about pulling together the USFS’s long term treatment plans to share with the Roundtable at the May 31 meeting, as a starting point to collaboratively developing a long term treatment plan.
2. The new Roundtable initiative to “increase social acceptance of smoke management and prescribed fire:” **Megan** will bring this topic to the Community Protection Team to see if that team’s work can address this issue. 5/9 update: Group discussed it, but didn’t want to take it on as a team initiative
3. The new Roundtable initiative to “support policies that stabilize funding at adequate levels to meet management objectives:” The ET did not see a clear role for the Roundtable on this effort other than federal legislative outreach (e.g., DC trips) and supporting ad hoc outreach efforts of local counties and municipalities. **The ET agreed to bring this question back to the Roundtable about what the counties and local gov’ts would like to see the Roundtable actively do.**
4. The next quarterly Roundtable meeting:
 1. **Glenn** is helping Gali confirm Dan Jiron’s timing (10:30am – 12pm) and a location for 3/8 (we are still having trouble finding a room big enough but have feelers out to two more locations – please let us know if you have other suggestions than USFS RO and Jeffco, which are both booked)
 2. Tony Cheng recommended a guest speaker—Dr. Susan McCaffrey—to speak about social science aspects of forest restoration and treatments; the ET decided to expand this topic into a panel and **Terra** will work with Tony to invite Dr. McCaffrey and authors from another social science study that Glenn recommended (Public Perceptions of the Mountain Pine Beetle in Three Study Areas in Northern Colorado and Southern Wyoming, see documents below)
 3. **Gali** will send a draft agenda to the ET after the other potential speakers are confirmed. In addition to speakers, the agenda will allow plenty of time for debriefing from the 11/30/12 meeting when the Roundtable prioritized 3 new long-term initiatives. We will break into groups and also discuss in plenary how to proceed on each initiative.
5. The Colorado Collaboration Award: **Carol** and **Megan** will look into possibly applying for this grant, with the support of a CUSP staff member, Helen Dyer. 5/9 update: no MOU was an issue



Next Steps from March 8 Roundtable Meeting

1. **John Ring:** Help on the teacher training / outreach initiative led by Shawna Crocker
2. **Carol Ekarius:** Work with Mike McHugh to plan two summer field trips for elected officials to Waldo and High Park fire sites (Shawna Crocker offered to coordinate using CSU's vans which can seat 12 passengers each); 5/9 update: just for elected officials, not as part of the RT mtg
3. **Peter Brown:** Look into planning a science / education symposium, perhaps in partnership with the Colorado Forest Collaboratives group led by Lisa Dale, perhaps in partnership with the CFLR Coalition or the NFF's CFLR webinars. Activities may include: writing a letter to CFRI and others to coordinate a science synthesis; 5/9 update:
4. **Rob Addington:** Work with Mike Babler to speak with the state Prescribed Fire Council to get ideas about the Roundtable can participate in promoting the increased use of prescribed fire
5. **Hal Gibbs:**
 1. Work with Mark Martin & Craig Jones on thinking through the future of the BUSS team (biomass utilization and slash site); ask Mike Smith how the Roundtable can best stay up to date on biomass utilization opportunities, challenges, progress and needs
 2. Work with data providers and a GIS expert on updating the 2009 Roundtable map of where forest treatments have taken place, in relation to where the Roundtable recommended that forests be treated for forest restoration and/or fire risk mitigation



Preliminary Outline for May 31 Roundtable Meeting

- Friday, May 31, 9:30 -- 3:30, Boulder County Clerk & Recorder, 1750 33rd Street, Boulder, CO 80301. (megan to send map and parking info)

An agenda will be sent by mid-May, but for now we know that we will most likely:

1. Be asked by the Landscape Restoration to approve their proposed adaptive management process for the Collaborative Forest Landscape Restoration Program (CFLRP) [Greg Aplet] – 45 minutes
2. Hear from the Wildlife Team about progress towards including wildlife in CFLR monitoring [Rick Truex] – 30 min
3. LCC Monitoring – tentative (Jenny/Paula) – 30 minutes
4. Hear from the USFS on **their known treatment plans for the next few years** so that the Roundtable can take those plans into account as we detail our 40-year treatment vision* [Jerri & Glenn intro]
 1. Colorado roadless rule changes with maps [Ken Tu – Glenn will invite]
 2. Maps: 2010-12 Treatments, and plans for 2013 and 2014 (including CFLR, stewardship contract, and other plans) [Jeff & Hal - send Gali to print, also bring large format maps to hang up]
 3. 1 hour
5. The new Roundtable initiative to “support policies that stabilize funding at adequate levels to meet management objectives:” The ET did not see a clear role for the Roundtable on this effort other than federal legislative outreach (e.g., DC trips) and supporting ad hoc outreach efforts of local counties and municipalities. **The ET agreed to bring this question back to the Roundtable about what the counties and local gov’ts would like to see the Roundtable actively do.** – 45 min
6. Lunch: 30 min, Break: 15 min
7. 1:30, Prescribed Fire topic – summary of recent rule changes and how agencies are moving forward, including in fire management [Rocco Snark – Megan to invite]
 1. Boulder County – Jay Stahlnecker, **megan to ask**
 2. TNC – Mike Babler – **paige will ask**
 3. CPW – Casey Cooley, **paige to ask**
 4. USFS – Cheri Ford – AR & Paul Langowski (R2), **glenn to ask**



Preliminary Outline for 9/13 Roundtable Meeting

September 13 meeting:

1. Community Protection focus
 1. Fire adapted communities? (Jonathan Bruno)
 2. Upper Fountain Creek (Carol/Paige) & Lyon Buttonrock (Chad Julian) → future meeting?
 3. Insurance task force report (report to Governor in July)



The Front Range Roundtable

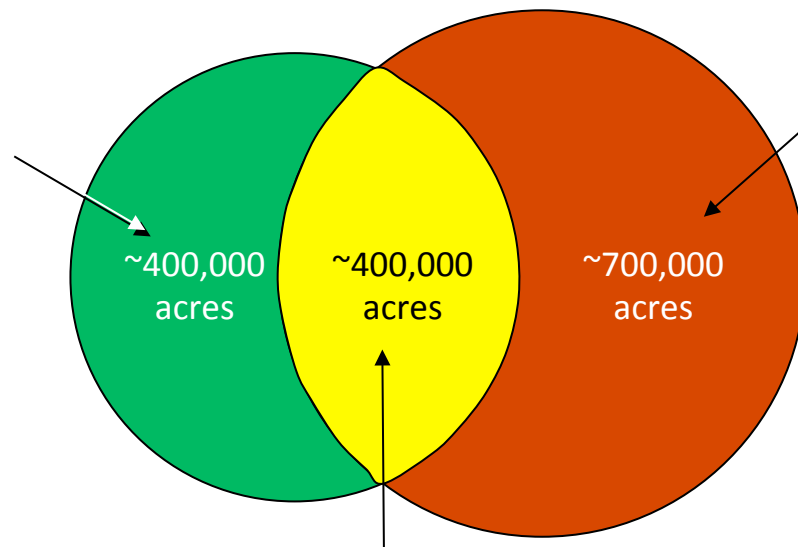
Mission

The Front Range Roundtable was formed to “serve as a focal point for diverse stakeholder input into efforts to reduce wildland fire risks and improve forest health through sustained fuels treatment along the Colorado Front Range.”

Vision

The Front Range roundtable has reached consensus that **1.5 million acres of Front Range forests require treatments to reduce fire risk and/or achieve ecological restoration.**

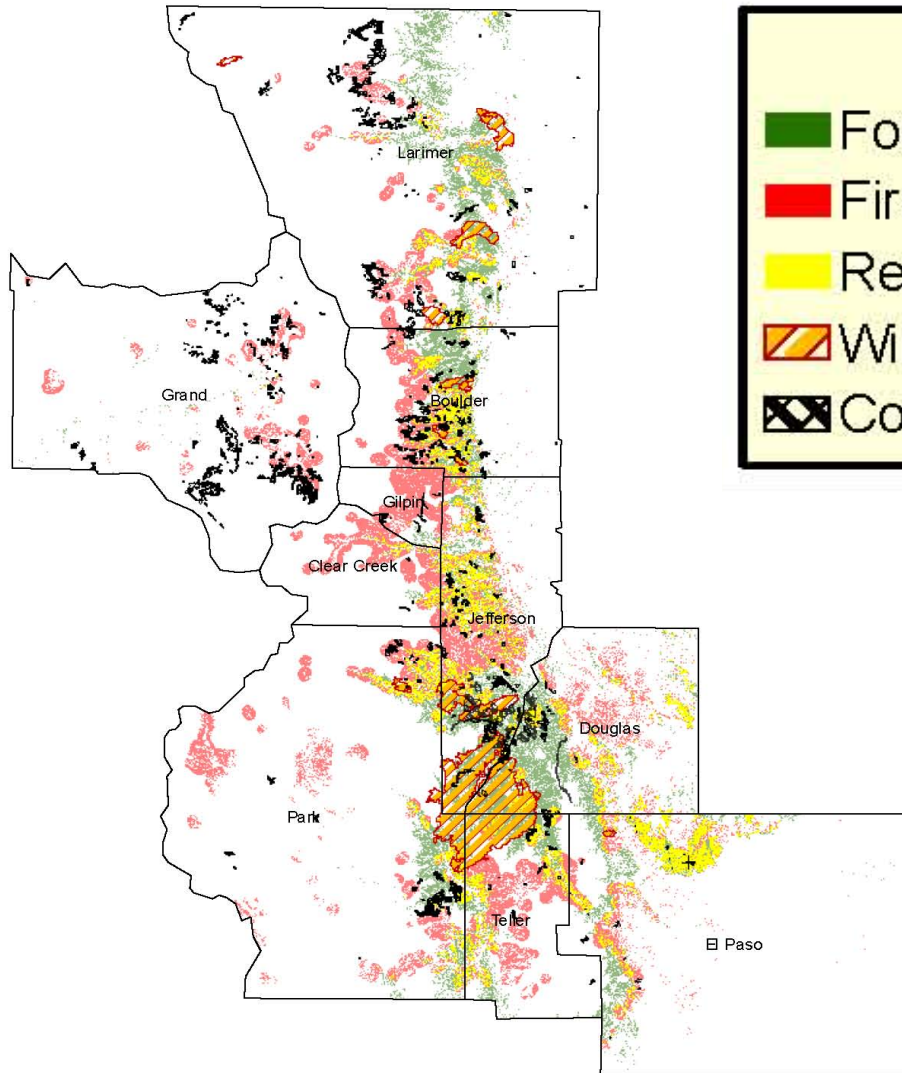
**Ecological
Restoration
Goals**



**Fire Risk
Mitigation Goals**

Overlap of goals

2009 Map of Priorities: Accomplishments vs. 2006 Recommendations



Notes on methods

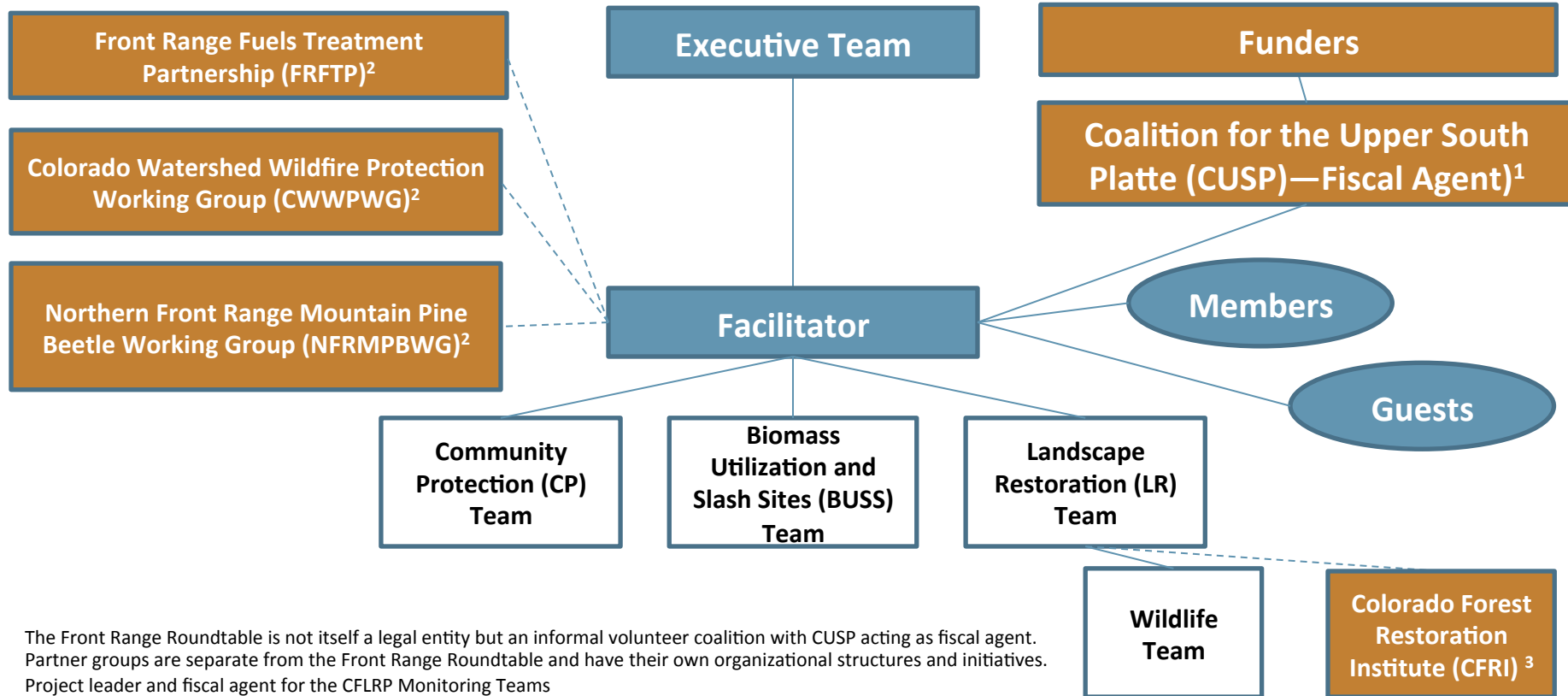
1. Data collected back to 2004 to our best available knowledge (received for treated acres separately from planned acres as shown)
2. Excludes private land treated without the assistance of the CSFS
3. Excludes county lands treated in Park, Teller, Douglas, El Paso, and Grand.
4. Some of these areas have been treated with prescribed or natural burn and may not require additional near-term treatment. Some of these areas have been treated mechanically but still require prescribed or natural burn to achieve restoration.
5. Different databases are used between units/agencies. Data is comparable within a unit, but not between units. This should be resolved for 2009 and future years.

Roundtable Organization

- Roundtable
- Partners
- Mixed teams

Since 2006, 438 people from 150 organizations have participated in the Roundtable (210 active subscribers to email list; to join, see www.frontrangeroundtable.org → “Join Us”)

| | |
|--------------------|----------------------------|
| Boulder County | National Forest Foundation |
| Clear Creek County | USFS-AR |
| Douglas County | USFS-Pike |
| Gilpin County | CSFS |
| El Paso County | TNC |
| Jefferson County | West Range Reclamation |
| Larimer County | RMRS |
| Park County | Denver Water |
| Teller County | NRCS |



1. The Front Range Roundtable is not itself a legal entity but an informal volunteer coalition with CUSP acting as fiscal agent.
 2. Partner groups are separate from the Front Range Roundtable and have their own organizational structures and initiatives.
 3. Project leader and fiscal agent for the CFLRP Monitoring Teams



Executive Team Structure and Change Process

Size: At least 6 or no more than 9 members⁴

- Dedicated to certain organizations¹
- Dedicated to certain stakeholder groups²
- Open to other stakeholder groups³

Current Executive Team Membership

| | | | | | | | | |
|---|--|--|--|--|--|--|--|---|
| USFS-AR Supervisor Glenn Casamassa | USFS-PSI Supervisor Jerri Marr | CSFS State Forester (Acting) Joe Duda | Conserva- tion NGO Paige Lewis, The Nature Conservancy | County Commis- sioner— North Cindy Domenico, Boulder County | County Commis- sioner— South Sallie Clark El Paso County | Treasurer Carol Ekarius, Coalition for the Upper South Platte | Landscape Restoration Team Liaison Pam Motley, West Range Reclamation | Community Protection Team Liaison Megan Davis, Boulder County |
|---|--|--|--|--|--|--|--|---|

Process for changing membership:

Only when there is a change in the leadership of the organization shown

Terms end (or renew) May 2013

Term ends (or renews) Dec. 2013

Terms end (or renew) at end of June 2013

Glenn & Jeri to invite Mike Lester, CSFS (through Joe)

1. Three seats are dedicated to certain organizations shown
2. Two seats are dedicated to certain stakeholder groups representing organization rotating each year, as desired
3. One seat is dedicated to other stakeholder groups for each of the two main working teams: the Community Protection Team and the Landscape Restoration Team. One seat is dedicated to other stakeholder groups with the stakeholder type and/or representing organization rotating each year as desired among: Conservation, Insurance, Local Government, Planning, Private, Recreation, Science / Academic, State Government, Timber, or Water
4. Membership size can vary depending on the decisions of the Executive team and Roundtable needs / number of applicants



Budget Update—Expenses (Page 1 of 2)

- The NFF grant ended in January for the LR team: \$10k from March 2012 to January 2013
- CSU has been funding the LR team and the Wildlife team since February:

| Month-year | Full name | Role | Sum of Total Time | Average of Billing rate | Sum of Total billing |
|--------------------------|---------------|-----------|-------------------|-------------------------|----------------------|
| 2013, 02. February | Gali Beh | Principal | 8:45 | \$55.00 | \$481.25 |
| | Terra Lenihan | Associate | 6:15 | \$40.00 | \$250.00 |
| 2013, 02. February Total | | | 15:00 | \$49.29 | \$731.25 |
| 2013, 03. March | Gali Beh | Principal | 20:15 | \$55.00 | \$1,113.75 |
| | Terra Lenihan | Associate | 13:45 | \$40.00 | \$550.00 |
| 2013, 03. March Total | | | 34:00 | \$50.00 | \$1,663.75 |
| 2013, 04. April | Gali Beh | Principal | 18:45 | \$55.00 | \$1,031.25 |
| | Terra Lenihan | Associate | 14:15 | \$40.00 | \$570.00 |
| 2013, 04. April Total | | | 33:00 | \$49.26 | \$1,601.25 |
| Grand Total | | | 82:00 | \$49.51 | \$3,996.25 |

- CUSP is the fiscal agent for all other Roundtable activities and associated monies (see next page)



Budget Update—Expenses (Page 2 of 2)

- CUSP is the fiscal agent for all other Roundtable activities and associated monies

| Month-year | Full name | Role | Sum of Total Time | Average of Billing rate | Sum of Total billing |
|---------------------------|---------------|----------------|-------------------|-------------------------|----------------------|
| 2012, 07. July | Gali Beh | Principal | 7:00 | \$50.00 | \$350.00 |
| | Chris Beh | Office Manager | 0:15 | \$35.00 | \$8.75 |
| 2012, 07. July Total | | | 7:15 | \$49.17 | \$358.75 |
| 2012, 08. August | Gali Beh | Principal | 33:45 | \$50.00 | \$1,687.50 |
| 2012, 08. August Total | | | 33:45 | \$50.00 | \$1,687.50 |
| 2012, 09. September | Gali Beh | Principal | 12:00 | \$50.00 | \$600.00 |
| 2012, 09. September Total | | | 12:00 | \$50.00 | \$600.00 |
| 2012, 10. October | Gali Beh | Principal | 47:45 | \$50.00 | \$2,387.50 |
| | David Duggan | Analyst | 1:15 | \$35.00 | \$43.75 |
| 2012, 10. October Total | | | 49:00 | \$49.53 | \$2,431.25 |
| 2012, 11. November | Gali Beh | Principal | 32:30 | \$50.00 | \$1,625.00 |
| | Terra Lenihan | Associate | 28:30 | \$35.00 | \$997.50 |
| 2012, 11. November Total | | | 61:00 | \$43.53 | \$2,622.50 |
| 2012, 12. December | Gali Beh | Principal | 7:15 | \$50.00 | \$362.50 |
| | Terra Lenihan | Associate | 16:00 | \$35.00 | \$560.00 |
| 2012, 12. December Total | | | 23:15 | \$44.50 | \$922.50 |
| 2013, 01. January | Gali Beh | Principal | 9:45 | \$50.00 | \$487.50 |
| | Terra Lenihan | Associate | 5:30 | \$35.00 | \$192.50 |
| 2013, 01. January Total | | | 15:15 | \$45.80 | \$680.00 |
| 2013, 02. February | Gali Beh | Principal | 16:15 | \$55.00 | \$893.75 |
| | Terra Lenihan | Associate | 21:45 | \$40.00 | \$870.00 |
| 2013, 02. February Total | | | 38:00 | \$50.00 | \$1,763.75 |
| 2013, 03. March | Gali Beh | Principal | 20:00 | \$55.00 | \$1,100.00 |
| | Terra Lenihan | Associate | 8:15 | \$40.00 | \$330.00 |
| 2013, 03. March Total | | | 28:15 | \$50.34 | \$1,430.00 |
| 2013, 04. April | Gali Beh | Principal | 10:15 | \$55.00 | \$563.75 |
| | David Duggan | Analyst | 0:45 | \$40.00 | \$30.00 |
| | Terra Lenihan | Associate | 5:30 | \$40.00 | \$220.00 |
| 2013, 04. April Total | | | 16:30 | \$49.60 | \$813.75 |
| Grand Total | | | 284:15 | \$47.85 | \$13,310.00 |

\$24k from
July 2012
to April
2013

