

# Colorado Conservation Exchange

A Mechanism for Enhancing Nature's Benefits



# COLORADO CONSERVATION EXCHANGE

---

## Timeline



## COLORADO CONSERVATION EXCHANGE

---

### People Engagement

- **Our Founders:** Josh Goldstein, Rick Knight, Heather Knight, Hill Grimmet, David Jessup, Patrick Flynn, Heidi Huber-Stearns, Robin Reid
- **Our Partners:** Sylvan Dale Ranch, Roberts Ranch, Community Foundation of Northern Colorado, NRCS, City of Fort Collins, City of Greeley Water and Sewer, City of Loveland Water, Northern Water, Odell Brewing Company, New Belgium Brewing Company, Anheuser-Busch, Regenesis, WRV, NRCS, CPRW, USFS, CNHP, Larimer County, EDF, Colorado Water Institute, Poudre Runs Through It, TNC, BTWF, BTRRC, Poudre River Trust, Colorado Water Innovation Cluster, Brendle Group, CSE, WRI, EI, CLEAN,
- **Our Supporters:** Ed Warner, New Belgium Brewery, Community Foundation, two anonymous donors, The Nature Conservancy, Northern Colorado Food Incubator, Sylvan Dale Ranch, the Center for Collaborative Conservation, CSU

### Situation Analysis & Feasibility Assessment

- **2013 Green vs. Gray Analysis**
  - Center for Sustainable Economy and World Resources Institute
  - Potential cost savings in Cache la Poudre and Big Thompson Watersheds
- **Opportunities Identified**
  - An ambitious, yet achievable portfolio of **fire risk reduction and watershed restoration** measures in the upper watershed could **reduce fire-related costs by nearly \$320 million over 20-years**, after taking implementation costs into account.
  - In the lower watershed, a **nutrient trading program** that financed best management practices on cropland and grazing land above Fort Collins and Greeley could help those cities meet nutrient reduction targets for the wastewater sector at a **greatly reduced cost between \$9.8 to \$15.4 million**.



Our Quality of Life Depends on the Benefits  
We Receive from Nature

## Colorado Conservation Exchange

### **Vision**

A Colorado where rural and urban communities join to enhance the natural resources, wildlands, and agricultural areas upon which our quality of life depends

### **Mission**

To create a watershed investment fund where community members support land stewards who conserve and enhance nature's ability to provide clean and abundant water, healthy food, productive soils, carbon storage, wildlife habitat, and inspiring open spaces



# Our Quality of Life Depends on the Benefits We Receive from Nature

## Colorado Conservation Exchange

### What is the Need?

- The Exchange is being formed to preserve and enhance our quality of life by proactively addressing the growing threats to our critical natural resources & watershed health:
- Impacts to water quality and infrastructure from wildfires, beetle kills, ag. runoff and development.
- Regional population boom leading to increased demand for natural resources
- Unpredictable climate changes
- Decrease in public conservation funding

### Goals of the Colorado Conservation Exchange

- To preserve our quality of life by raising the awareness of rural-urban interdependence on the benefits of healthy forests and rangelands, and the threats to water quality and quantity, wildlife habitat, and recreational opportunities
- To create a watershed investment fund enabling transparent and efficient payments to landowners and natural resource managers who use best management practices in priority places that enhance nature's benefits and protect water supply infrastructure in the upper Poudre & Big Thompson watersheds.



# Our Quality of Life Depends on the Benefits We Receive from Nature

## Colorado Conservation Exchange

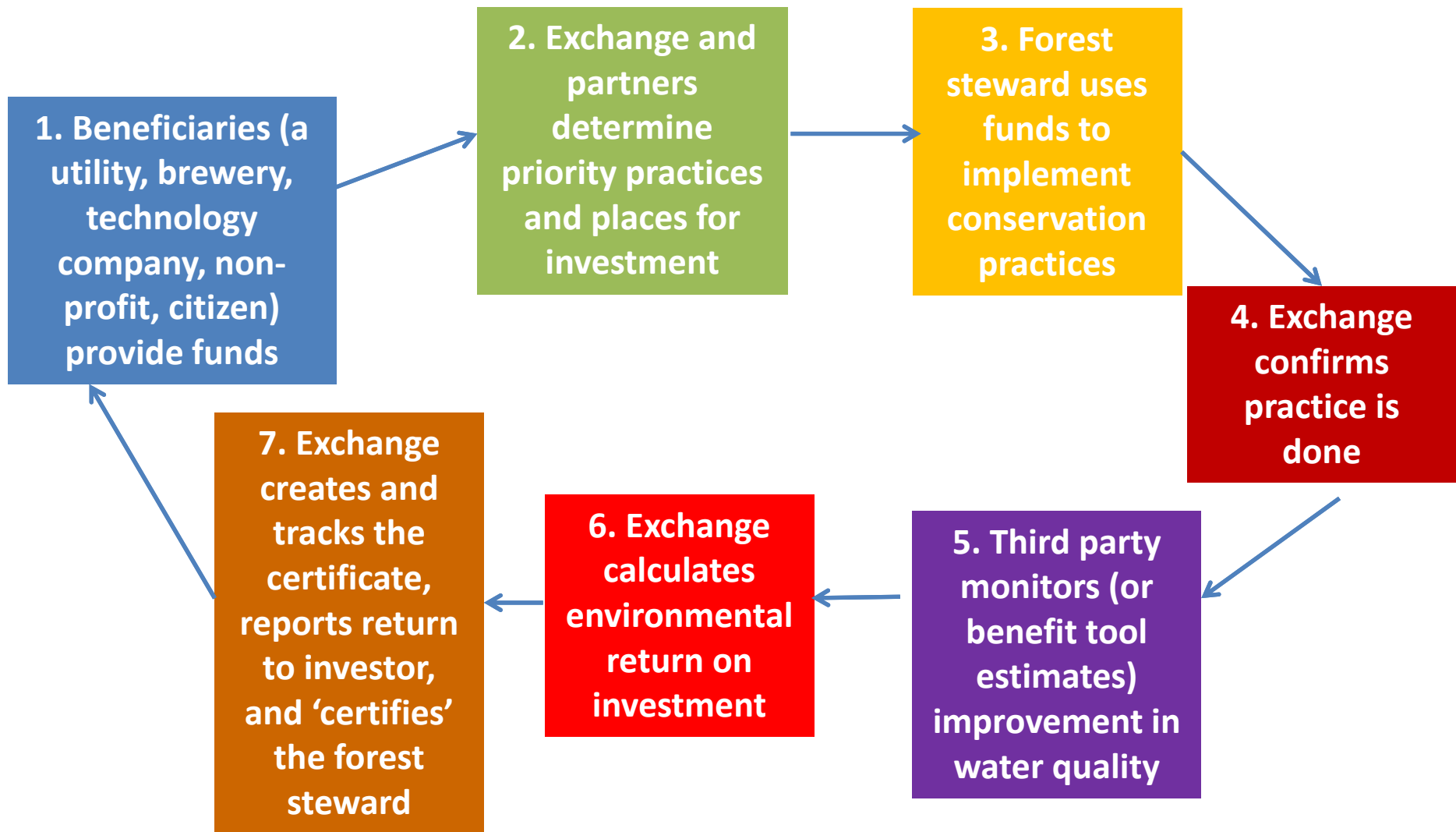
### Our Approach

The **Exchange** will be a connector between **Beneficiaries** who want to manage business risk or support watershed improvements with **Stewards** whose practices can improve the provision of **Nature's Benefits**.

### Key Elements

- Leverage through combined investment from multiple stakeholders.
- Projects prioritized based on collaborative, science-based analysis.
- Return on investment quantified and recognized through post-treatment monitoring.
  - Increased resources available to support forest stewards.

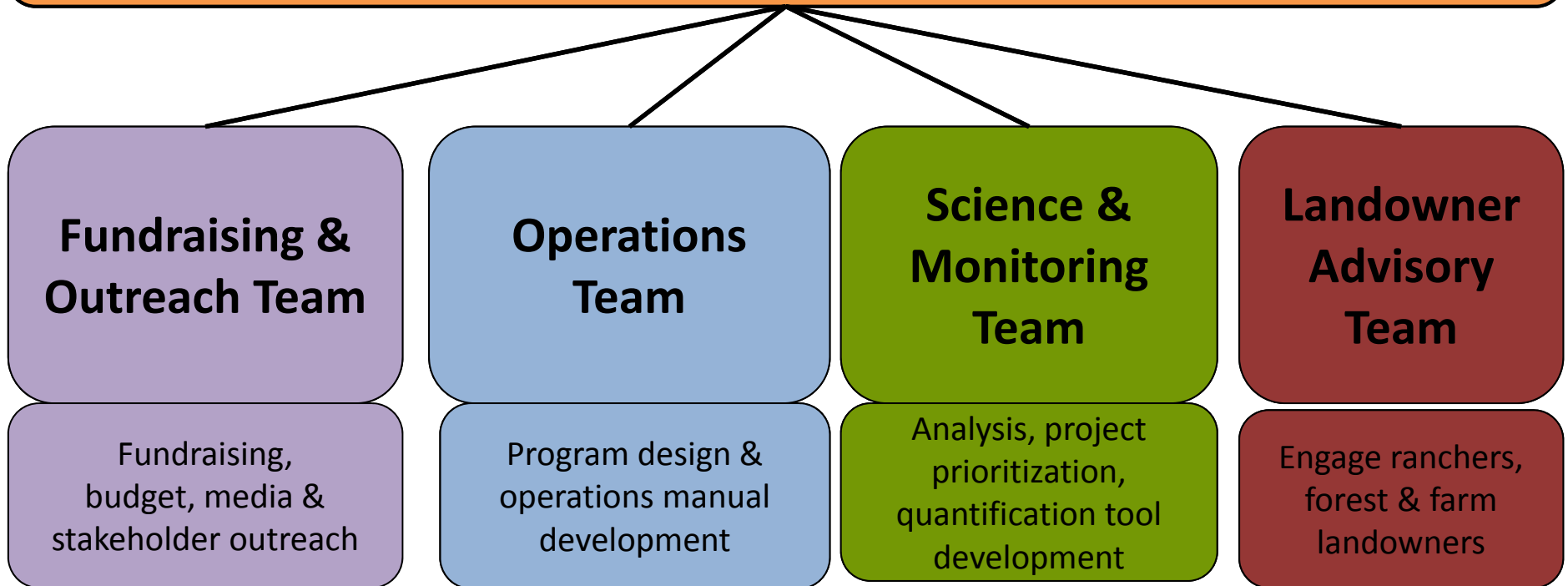
## Seven steps of a Conservation Exchange transaction





# Conservation Exchange Working Group

(co-lead by Heather Knight & Robin Reid)

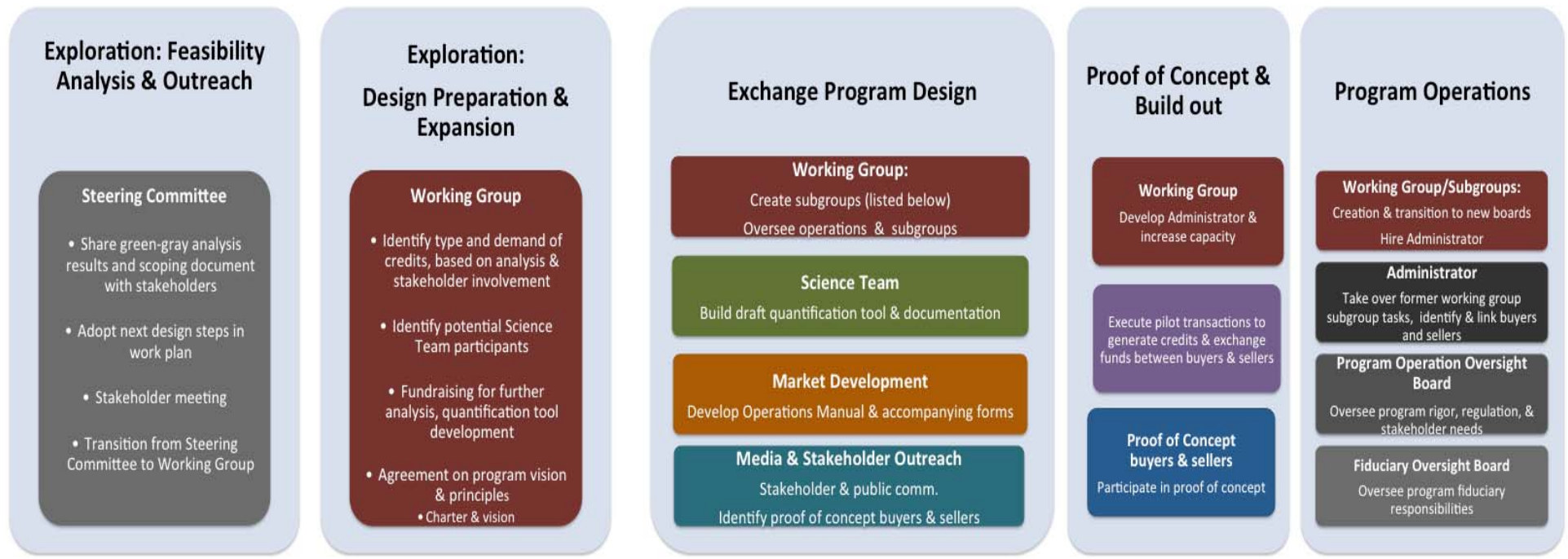
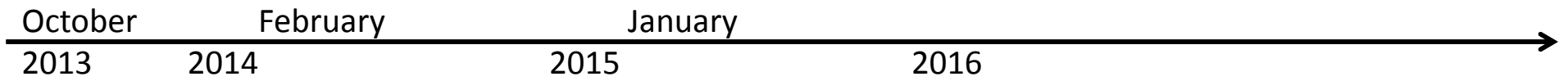


The Nature Conservancy  
Sylvan Dale Guest Ranch  
New Belgium Brewing  
Center for Collaborative Conservation  
Colorado Natural Heritage Program  
Larimer County

Community Foundation of No. Colorado  
Coalition for the Poudre River Watershed  
Loveland Water  
Greely Water and Sewer  
Northern Water  
Fort Collins Utilities

# COLORADO CONSERVATION EXCHANGE

## Timeline



## COLORADO CONSERVATION EXCHANGE

### Working Group Interim Steps for Summer 2014

Steps	Participants
<b>Upper Watershed Follow-up</b> 1. Convene Science and Monitoring Team to begin developing framework for watershed analysis and project prioritization.	Working Group & Science Team leads, CPRW, BTRRC, Northern
<b>Lower Watershed WQT Final Ready Questions</b> 1. Address ongoing questions, determine whether or not to pursue a more detailed feasibility study.	Greeley, Freshwater Trust, Willamette Partnership, possibly other utilities
<b>Fundraising and Outreach Team</b> 1. Develop materials 2. Develop and begin implementing fundraising strategy	WG leaders
<b>Inventory</b> 1. Inventory of existing activities and available data in the Cache la Poudre (first inventory), and Big Thompson (second inventory) watersheds	Tomas to conduct, Heidi to supervise
<b>Working Group</b> 1. Monthly Email update 2. September 16 meeting organization	Heidi coordinate, WG participate