

Science & Monitoring (SM) Team

Meeting #2

November 10, 2009—1 to 4 PM

Location: The Nature Conservancy, 2424 Spruce St., Boulder CO 80302, Room 305B

Contact: gall@behconsulting.com



SM Meeting #2 Agenda

Topic	Timing
1. Introductions (quick ice breaker)	1:00 – 1:15
2. Recap of outcomes from kickoff meeting (10/29/09); update on action items from kickoff meeting	1:15 – 1:30
3. Create high-level work plan for 2010, volunteer for work streams as desired	1:30 – 2:15
4. Break	2:15 – 2:30
5. Work stream 1:	2:30 – 3:00
6. Work stream 2:	3:00 – 3:30
7. Work stream 3:	3:30 – 3:45
8. Next steps	3:45 – 4:00



Roundtable SM Team Contact List

X = Roundtable member

First Name	Last Name	Organization	Department	Title	SM	Address	City	State	Postal Code	Primary Phone	Alternate Phone	Email
Brian	Banks	US Forest Service, PSI	Pike National Forest South Platte Ranger District	GIS Coordinator	X				(303) 275-5638			bbanks@fs.fed.us
Gali	Beh	Management Consulting, Inc.	Front Range Roundtable	Coordinator	X	1107 12th St. #134	Boulder	CO	80302303-499-1576	2375	303-514-2375	gali@behconsulting.com
Jenny	Briggs	US Geological Survey	US Geological	Research Ecologist	X	DFC Building 810	Lakewood	CO	80225303-202-4078			jsbriggs@usgs.gov
Casam	Glenn	US Forest Service, AR	Arapaho and Roosevelt National Forests and Pawnee National Grassland	Forest Supervisor	X	2150 Centre Ave, Building E	Fort Collins	CO	80526-8119	970-295.6600		gcasamassa@fs.fed.us
Tony	Cheng	Colorado State University	Colorado Forest Restoration Institute		X							tony.cheng@colostate.edu
Jessica	Cleme	Colorado State University	Colorado Forest Restoration Institute		X					970-491-2104		jessica.clement@colostate.edu
Chuck	Dennis	Colorado State Forest Service	Colorado State Forest Service	FRFTP State Operations	X	FRWWPW 9769 W. 119th Drive, Suite 12	Broomfield	CO	80021-2560	303-465.9043		cdennis@lamar.colostate.edu
Leslie	D	US Fish and Wildlife Service	Wildlife Service	Wildlife Biologist	X	134 Union	Lakewood	CO	80225303-236-4747			Leslie_Ellwood@fws.gov
Hal	Gibbs	US Forest Service, AR	Arapaho and Roosevelt National Forests and Pawnee National Grassland	Eco Group Leader	X	2150 Centre Avenue, Building E	Fort Collins	CO	80526970.295.6630			hdgibbs@fs.fed.us
Phil	Guthrie	Colorado Renewable Resource Cooperative	Colorado Renewable Resource Cooperative	Consulting Forester	X	1874 Vagabond Creek Dr.	Lake George	CO	80827719-748-8541	4608	719-271-4608	pguthrie60@gmail.com
Bryan	Martin	Colorado Mountain Club	Colorado Mountain Club		X	710 10th Street, Suite 200	Golden	CO	802012768	(303) 996-2027		bryanmartin@cmc.org
Michael	Owen	City of Aurora	Aurora Water		X					720-381-8866		mmchugh@auroragov.org
Allen	Owen	Colorado State Forest Service	Boulder District		X							alowen@lamar.colostate.edu
Deborah	Schofield	US Forest Service, AR	Arapaho and Roosevelt National Forests and Pawnee National Grassland	Assistant to Forest Supervisor	X	2150 Centre Ave, Building E	Fort Collins	CO	80526-8119	970.295.6600		dschofield@fs.fed.us
Bob	Sturtevant	Colorado State University	Colorado Forest Restoration Institute	Extension Forestry Specialist	X	131 Forestry Building	Fort Collins	CO	80523-1472	970-491-7598		bsturt@lamar.colostate.edu
Nathan	Williamson	National Park Service	National Park Service	Fire Ecologist	X	1000 Highway 36	Estes Park	CO	80517970-586-1434			nathan_williamson@nps.gov



SM Meeting #2 Agenda

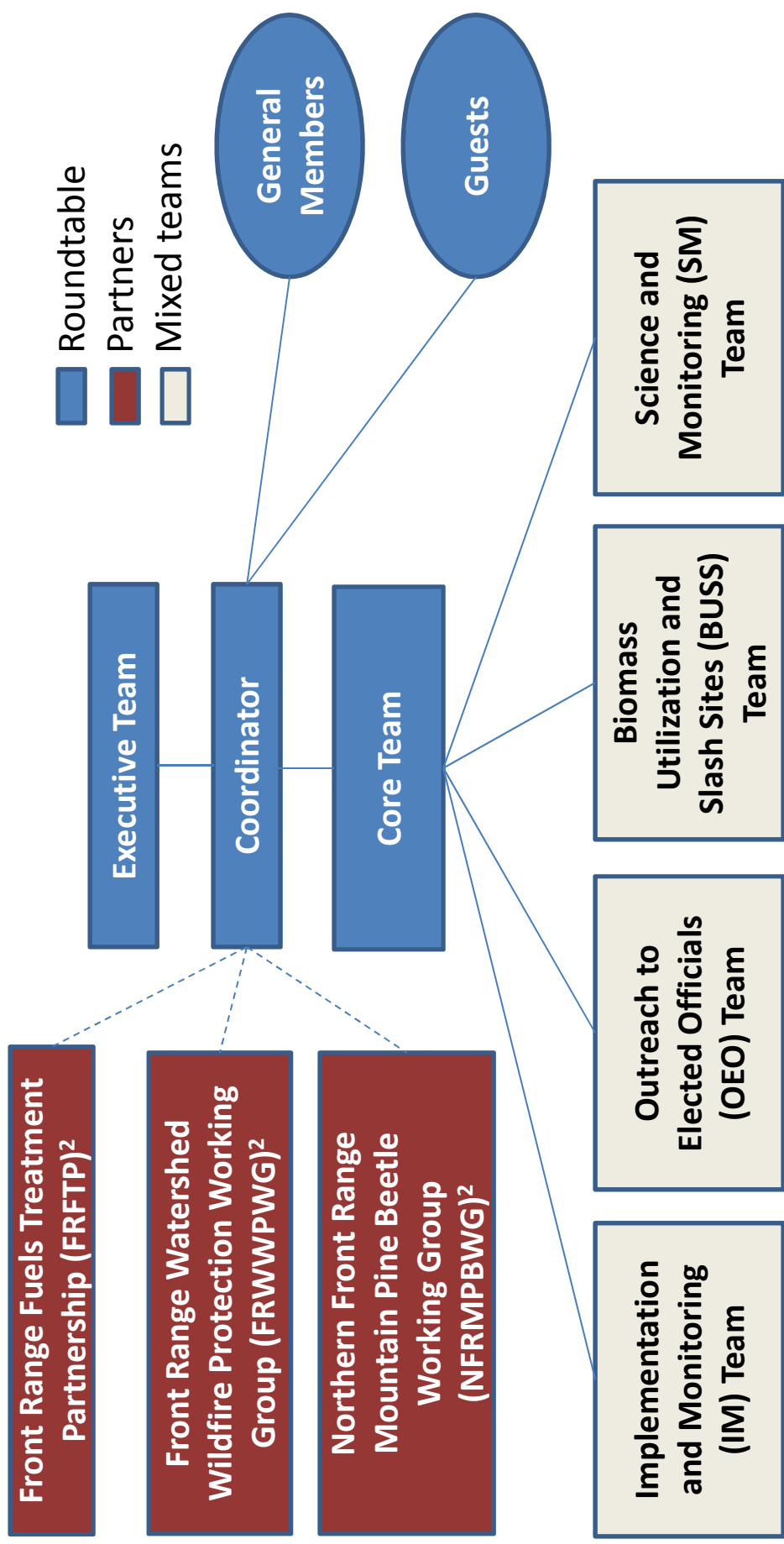
Topic

Timing

- | Topic | Timing |
|---|-------------|
| 1. Introductions (quick ice breaker) | 1:00 – 1:15 |
| 2. Recap of outcomes from kickoff meeting (10/29/09); update on action items from kickoff meeting | 1:15 – 1:30 |
| 3. Create high-level work plan for 2010, volunteer for work streams as desired | 1:30 – 2:15 |
| 4. Break | 2:15 – 2:30 |
| 5. Review draft deliverables for each work stream and discuss required action items | 2:30 – 3:45 |
| 6. Next steps | 3:45 – 4:00 |



Roundtable Organization¹



1. At the September 18, 2009 Quarterly Roundtable meeting, the attendees conducted a straw poll on priorities for 2010. While “Clarify/improve Organizational Structure” did receive a few votes, it ranked 9th out of 13 in possible priorities. Therefore, the coordinator proposes the acting organizational chart shown here at least through 2010 until creating a new organization is desired and prioritized.

2. These groups are separate from the Front Range Roundtable and have their own organizational structures and initiatives.



Progress against 2006 Roundtable Recommendations

✓ = Focus of Roundtable working team³

Self-Evaluation¹

- Completed
- Mostly there
- On track
- Needs attention

Roundtable goals

Increase funding for forest treatments

1. Identify new state and local funding sources for treatments on state and private land. ✓
2. Increase forest treatment incentives for private landowners. ✓
3. Advocate for additional federal funding for Front Range forest treatments. ✓

Reduce the cost of forest treatments

4. Increase appropriate application of prescribed fire and wildland fire use as a management tool. ✓
5. Increase utilization of woody biomass for facility heating. ✓
6. Increase contract sizes and durations with stewardship contracts on federal land. ✓

Ensure local leadership and planning

7. Limit the growth of fire risk in the Wildland-Urban Interface. ✓
8. Promote the development of Community Wildfire Protection Plans for Front Range communities-at-risk. ✓

Set clear priorities and ensure progress against common goals

9. Adopt a clear and common framework for prioritizing treatments. ✓
10. Convene follow-on Roundtable to ensure implementation of recommended initiatives. ✓

1. Results of straw poll from September 18, 2009 Quarterly Roundtable meeting of 37 attendees from 24 organizations representing 11 stakeholder groups.
 2. Considered completed for USFS but still an improvement area for the CSFS
 3. Results of Kickoff team discussions on October 28, 2009



Proposed SM Team Outline

Team Name

Science and Monitoring
(SM)

2010 goals

1. Evaluate progress of forest treatments in the Roundtable's 2006 priority areas.
2. Help the USFS monitor its stewardship contract
3. Further prioritize Roundtable priority areas best suited to mechanical treatments

Background to each goal

1. In May 2006, the Roundtable recommended 1.5 million acres as prioritized for forest treatments in the 10 county area. In May 2009, the Roundtable decided to assess progress against treated acres.
2. In October 2009, the Roundtable learned that the USFS stewardship contract required the formation of a monitoring group and decided to explore whether this team would be a good fit and have the capacity for the role.
3. In July 2009, the Mapping Team of the Roundtable attempted to further prioritize acres suitable for mechanical treatment but determined that the team needed to expand its membership to reach consensus. The Mapping team thus split into two GIS-based groups: one for the IM team which in 2010 will act on the best available current data, and one for the SM team which is looking ahead to further prioritization that the IM team can act on in 2011 and beyond.

2010 work streams by goal

1. Evaluate treatment progress since 2004 against Roundtable priority treatment acres recommended in 2006.
 1. Scope: Use GIS data only, no ground truthing
 2. Next phase: After completing the above analysis, make the relevant GIS layers publicly available and recommend a process for annual updates
2. Explore becoming the monitoring group for the USFS stewardship contract and conduct response monitoring ¹as part of that role (if don't take that role, revisit conduct response monitoring in some other way)
3. Conduct the further prioritization for the Roundtable regarding slope and road access; update the 2006 map of recommended treatment areas to prioritize areas best suited for mechanical treatment. This map will inform future iterations of the IM team's work but they will not wait for this update map for their 2010 work.

Deliverables by goal

1. Tabular estimate of acres treated by county since 2004 (and whether in Roundtable priority areas); map of treatments accomplished since 2004; update planned each year for spring Quarterly meetings starting in 2011;
2. Decision on whether to become the monitoring group for the USFS's stewardship contract
3. Updated map of Roundtable priorities showing areas best suited for mechanical treatment



USFS Stewardship Contract Monitoring Group: AZ Example

White Mountains Stewardship Contract Multi-Party Monitoring

Background:

The federal Stewardship Contract language requires the U.S. Forest Service to convene a Multi-Party Monitoring (MPM) Board to recommend monitoring activities that assess the ecological, economic, and social impacts of the contract. The Apache-Sitgreaves National Forests initiated this board upon the finalization of the contract in 2004. The monitoring board is composed of over a dozen members from across the geographic area of the forests, and includes representation or interests in local, county, and state government and various resource and business individuals and organizations. This collaboration with stakeholders fosters understanding of the myriad of impacts from this Contract and provides a communication feedback loop to the Forest Service, resulting in better forest management. It also affords an opportunity to monitor landscape-level issues not covered in project-level monitoring. A certain sum of money is allocated for monitoring each year, and the board allocates money for specific monitoring projects. They will recommend ways to accomplish these monitoring activities and also provide feedback for future projects. This allows the Apache-Sitgreaves National Forests to incorporate adaptive management over the life of this 10-year project.

Multi-Party Monitoring Board Membership

Member	Representation
Sue Sitko, Current Chair	The Nature Conservancy
Don Berry	Interested citizen
Dave Brewer	Ecological Restoration Institute
Jerry Brownlow	Navajo County Board of Supervisors
Steve Campbell	U of A Cooperative Extension
Dave Dorum	Arizona Game and Fish Department
Bill Greenwood	Town of Eagar
Dustin Sanders	Eagar Town Council / Sessions Realty
Len Schlesinger	Apache NRCD
Steve Sims	CG Homes, Inc.
Lonnie Splawn	Apache County Community Wildfire Plan
Larry Stephenson	Eastern Arizona Counties Organization
Lorna Thurman	Life in the Forest
Bob Vahle	Arizona Wildlife Federation
	White Mountain Conservation LeagueApache-Sitgreaves National Forests staff members participating in Board activities include Bob Taylor, Resources Staff Officer; and Forests Supervisor Mr. Chris Knopp.
Liz Wise	To contact the Multi-Party Monitoring Board with questions, please e-mail or telephone: Sue Sitko, The Nature Conservancy and Current Chair: ssitko@tnc.org 928-368-6832 Robert Taylor, Resources Staff Officer: roberttaylor@fs.fed.us 928-333-4301

Source: <http://www.fs.fed.us/r3/asnf/stewardship/multi-party-monitoring.shtml>

Contact: gali@behconsulting.com



SM Meeting #2 Agenda

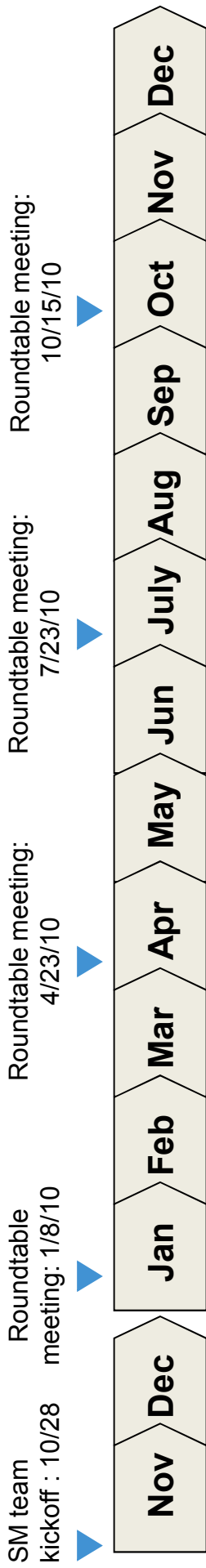
Topic	Timing
1. Introductions (quick ice breaker)	1:00 – 1:15
2. Recap of outcomes from kickoff meeting (10/29/09); update on action items from kickoff meeting	1:15 – 1:30
3. Create high-level work plan for 2010, volunteer for work streams as desired	1:30 – 2:15
4. Break	2:15 – 2:30
5. Review draft deliverables for each work stream and discuss required action items	2:30 – 3:45
6. Next steps	3:45 – 4:00



Proposed High Level Work Plan



1. Evaluate progress of forest treatments in the Roundtable's 2006 priority areas.
2. Help the USFS monitor its stewardship contract
3. Further prioritize Roundtable priority areas best suited to mechanical treatments



1a. Collect data and create v2 map

1b. Collect final data, create v3 map and tabular analysis

2a. Explore requirements, benefits, challenges

2b. Propose "go or no go" to Roundtable

1a. Agree on prioritization criteria

1b. Collect data

1c. Create v1 map, get Roundtable feedback

1c. Create v2 map

TBD

Volunteers?
Need GIS?



SM Meeting #2 Agenda

Topic	Timing
1. Introductions (quick ice breaker)	1:00 – 1:15
2. Recap of outcomes from kickoff meeting (10/29/09); update on action items from kickoff meeting	1:15 – 1:30
3. Create high-level work plan for 2010, volunteer for work streams as desired	1:30 – 2:15
4. Break	2:15 – 2:30
5. Review draft deliverables for each work stream and discuss required action items	2:30 – 3:45
6. Next steps	3:45 – 4:00



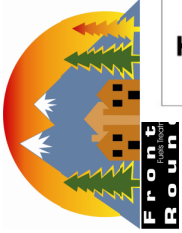
SM Meeting #2 Agenda

Topic	Timing
1. Introductions (quick ice breaker)	1:00 – 1:15
2. Recap of outcomes from kickoff meeting (10/29/09); update on action items from kickoff meeting	1:15 – 1:30
3. Create high-level work plan for 2010, volunteer for work streams as desired	1:30 – 2:15
4. Break	2:15 – 2:30
5. Review draft deliverables for each work stream and discuss required action items	2:30 – 3:45
6. Next steps	3:45 – 4:00



Illustrative Deliverable 1a: Data Table of Acres Treated and Remaining Goals

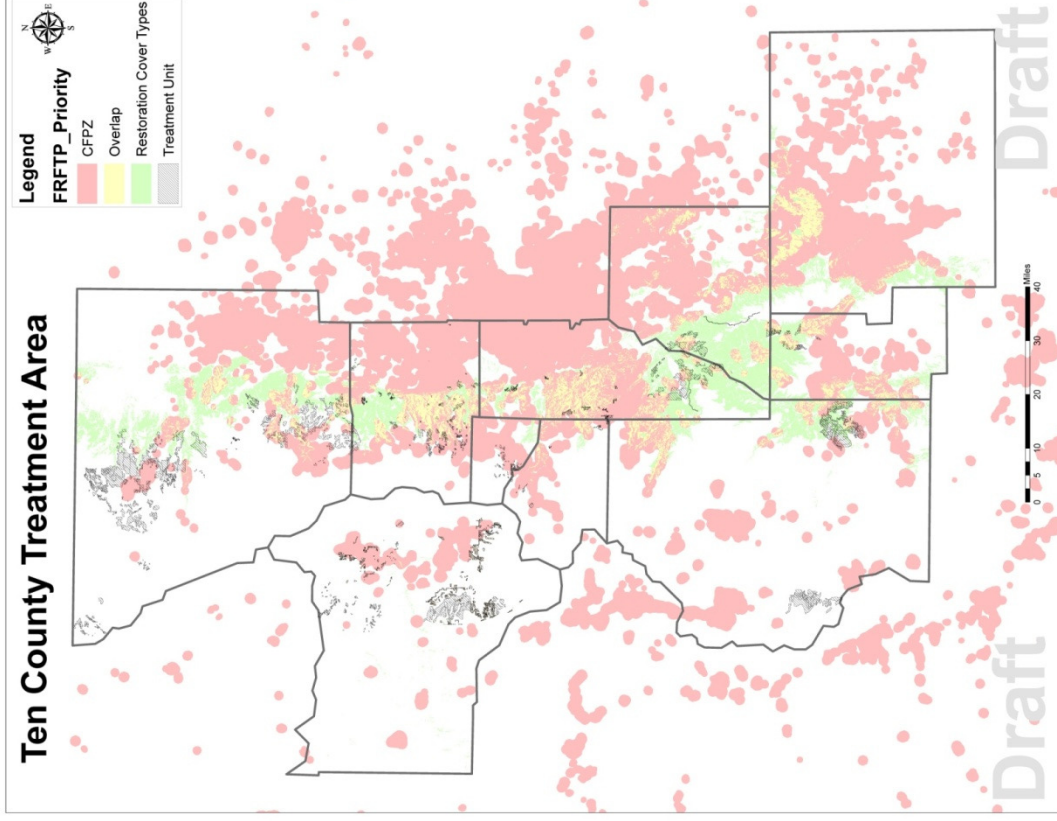
County	Overlap Zone			Fire Risk Mitigation Zone			Ecological Restoration Zone			Total Roundtable Priorities		
	2006 Goal	Treated	Re-maining	2006 Goal	Treated	Remaini ng	2006 Goal	Treated	Remai ning	2006 Goal	Trea ted	Remainin g
Boulder	51,021			77,212			35,978			164,211		
Clear Creek	7,356			58,595			833			66,784		
Douglas	40,529			61,143			90,807			192,479		
El Paso	57,107			41,891			31,169			130,167		
Gilpin	472			42,365			2,177			45,014		
Grand	390			94,321			1,838			96,549		
Jefferson	88,094			92,971			71,157			252,222		
Larimer	42,350			130,956			98,856			272,162		
Park	31,377			122,808			27,463			181,648		
Teller	23,168			86,848			27,211			137,227		
Total Front Range	341,864			809,110			387,489			1,538,463		



Illustrative Deliverable 1b: Results from Data Collected to Date

Issues

- Different databases are used between units/agencies. Data is comparable within a unit, but not between units. This should be resolved for 2009 and future years.
- Some of these areas have been treated with prescribed or natural burn and may not require additional near-term treatment.
- Some of these areas have been treated mechanically but still require prescribed or natural burn to achieve restoration



1. Data collected back to 2004 to our best available knowledge: excludes private land treated without the assistance of the CSFS, excludes county lands treated in (TBD). Some of these areas have been treated with prescribed or natural burn and may not require additional near-term treatment. Some of these areas have been treated mechanically but still require prescribed or natural burn to achieve restoration



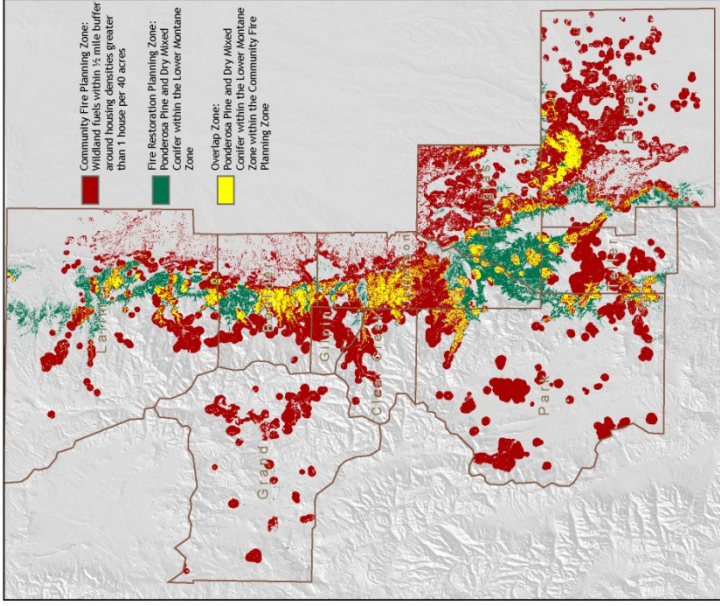
Progress on Data Collection for Treated Acres

Land ownership	Status and notes
AR	Brian has all data expected; A-R back to 2002
Pike	Brian has all data expected
Collect GIS data on treatments: CSFS	will include private land that CSFS worked; have GIS data from 2007, Scott collecting and digitizing (turning points into polygons) data back to 2004; 2 districts done Boulder, Franktown: Douglas, part of Teller), 8 counties more to go; Brian to ask Skip for 2 districts; will go with data from 2 districts for now; add more later as ready; stat no deadline, workplanning led by Scott and Skip); e and ask on 9/18 for help in getting this digitization back to 2004 project going.
Collect GIS data on Private	Don't have any private land treatments not done with CSFS; could we contact contractors such as Anchor Point to collect data? Karen: have NRCS farm bill treatments; need to get each conservation districts
Collect GIS data on treatments: NPS	Should have GIS back to 2004, 8/26: Hal to asked Nate Williamson (or Mike L), needs to follow up
Collect GIS data on treatments: BLM	BLM: Hal to ask Jeff Kitchens; Hal sent email 8/26 saying he had initiated task; will check in with Brian to ensure receipt by 9/14; 9/2: Hal reported "done," task passed to Brian B; nothing received, Hal to follow up
Collect GIS data on treatments: Clear Creek, Gilpin	Received data from Chris Wanner; need to check if have all 3 counties in the data
Collect GIS data on treatments: Jefferson County	Received (the County also has a Fire Management crew that has treated approximately 81 acres in Jefferson County since 2006. This group doesn't have GIS capabilities so I cannot send any GIS information for them. No other county departments do fire mitigation work. The only other agency that might have information would be the CSFS Golden District Office. If you do contact them, you may want to make sure that they take out any Open Space prescribed fire projects because that would cause acres to be counted twice.)
Park	Defer for now – doubtful they have GIS data
Teller	Should ask-- Brian → Aaron ?
Douglas	Should ask-- Brian → Aaron ?
El Paso	Should ask — Brian → Aaron ?
Grand	Defer for now– doubtful they have GIS data
Larimer	Hal asking



Illustrative Deliverable 3a: Further Prioritized Areas for Mechanical Treatment

2006 Map of Roundtable Priorities



2009 Legend: Proposed (priority order?)

Remaining areas best suited for mechanical management¹

- Remaining overlap to treat
- Remaining CRPZ to treat
- Remaining FRPZ to treat

Non-ease of mechanical management priorities (Prescribed Burn, Wildland Fire Use, or more difficult mechanical treatments)¹

- Remaining overlap to treat
- Remaining CRPZ to treat
- Remaining FRPZ to treat

1. Includes areas previously indentified as Roundtable priorities but de-prioritized for mechanical treatment due to any one of three criteria: (1) slope $\geq 61\%$, (2) distance from road >1 mile, and (3) wilderness designation.



SM Meeting #2 Agenda

Topic	Timing
1. Introductions (quick ice breaker)	1:00 – 1:15
2. Recap of outcomes from kickoff meeting (10/29/09); update on action items from kickoff meeting	1:15 – 1:30
3. Create high-level work plan for 2010, volunteer for work streams as desired	1:30 – 2:15
4. Break	2:15 – 2:30
5. Review draft deliverables for each work stream and discuss required action items	2:30 – 3:45
6. Next steps	3:45 – 4:00



Proposed Team Logistics

Team Meeting Frequency: This team typically meets on the 2nd and 4th TUESDAY afternoon of each month, with a

- longer, in-person meeting (1 - 4pm) on the 2nd Tuesday and a
- shorter conference call (1 – 2:30pm) on the 4th Tuesday.

Calendar: Please see the team calendar at www.frontrangeroundtable/SM_Working_Team.html for details for each meeting.

Location: Some of the longer meetings will be in person at TNC in Boulder (2424 Spruce St.). Please see the team website for details for each meeting.

Always use the following conference call information: call 866-852-1588, participant passcode: 516343.

2nd Tuesday login: <https://www2.gotomeeting.com/join/832391363>
Meeting Password: SM, Meeting ID: 832-391-363;

4th Thursday login: <https://www2.gotomeeting.com/join/787789011>
Meeting Password: SM, Meeting ID: 787-789-011

Team Calendar Through February 2010



Team	Event	Format	Location	Date	Time
SM	SM meeting 2	In person	TNC Boulder	Tuesday, November 10, 2009	1 - 4pm
SM	SM call 3	Call in only		Wednesday, November 25, 2009	1 - 2:30pm
SM	SM meeting 4	In person	TNC Boulder	Tuesday, December 08, 2009	1 - 4pm
SM	SM call 5	Call in only		Tuesday, December 22, 2009	1 - 2:30pm
All	Roundtable Quarterly Meeting: Q1-10	In person		Friday, January 08, 2010	9:30am - 3:30pm
SM	SM meeting 6	In person	TNC Boulder	Tuesday, January 12, 2010	1 - 4pm
SM	SM call 7	Call in only		Tuesday, January 26, 2010	1 - 2:30pm
SM	SM meeting 8	In person	TNC Boulder	Tuesday, February 09, 2010	1 - 4pm
SM	SM call 9	Call in only		Tuesday, February 23, 2010	1 - 2:30pm



Other Next Steps

1. The SM team's outline will be sent to the Roundtable membership.
 1. Expect to receive the SECM team's revised outline by end of day, Friday, Nov. 13
 2. Prepare to send Gali feedback by end of day, Wednesday, Nov. 18
 3. Gali will send all 4 team outlines to Roundtable members by end of day Friday, Nov 20.
2. Send any contact list updates to gali@behconsulting.com
3. Other?
4. Thanks!