

# **COLORADO FRONT RANGE LANDSCAPE RESTORATION INITIATIVE**

## **IMPLEMENTATION UPDATE**

**Arapaho & Roosevelt National  
Forests & Pawnee National  
Grassland**

**Pike & San Isabel National  
Forests & Cimarron & Comanche  
National Grasslands**

# ACRES TREATED FY 2011

## Task Orders Awarded to the LTSC:

| <b>PROJECT</b>                  | <b>FOREST</b> | <b>ACRES</b> | <b>COST</b>      |
|---------------------------------|---------------|--------------|------------------|
| Estes Valley 5/<br>Walker Black | ARP           | 826          | \$601,000        |
| Walker Red                      | ARP           | 883          | \$516,000        |
| Thompson River 2                | ARP           | 489          | \$298,000        |
| Phantom Creek 2                 | PSICC         | 871          | \$580,000        |
| Phantom Creek 3                 | PSICC         | 656          | \$428,000        |
| Ryan Quinlan                    | PSICC         | <u>356</u>   | <u>\$252,000</u> |
|                                 |               | 4,081        | \$2,675,000      |

# ACRES TREATED (FY 2011)

## Treatments Completed:

| <b>PROJECT</b>                | <b>FOREST</b> | <b>ACRES</b>  |
|-------------------------------|---------------|---------------|
| Phantom Creek 1 (FY 10 award) | PSICC         | 597           |
| Taylor (FY10 award)           | ARP           | 391           |
| Phantom Creek 2               | PSICC         | 600 estimated |
| Estes Valley 5/ Walker Black  | ARP           | 65 estimated  |
| Walker Red                    | ARP           | 220 estimated |
| Thompson River 2              | ARP           | 455 estimated |

# TREATMENTS

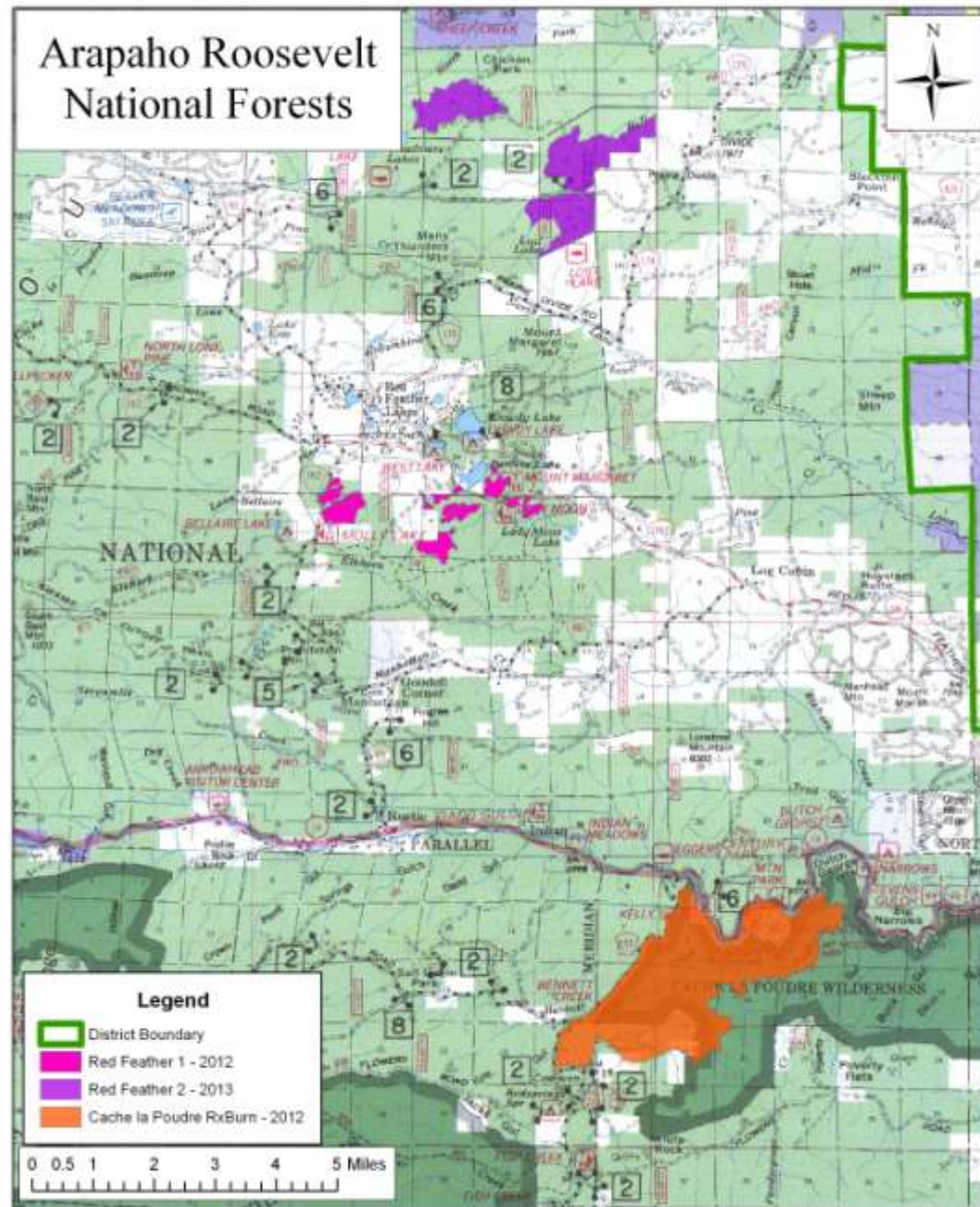
- 60% of total CFLR treatment acres to date are mechanized with product removal.
- 40% of total manual treatments.
  - Thinning, all crown classes.
  - Thin from below.
  - Patch cutting.
- Biomass not removed is piled or lop and scattered.
- No broadcast burning to date.

# PRODUCTS REMOVED

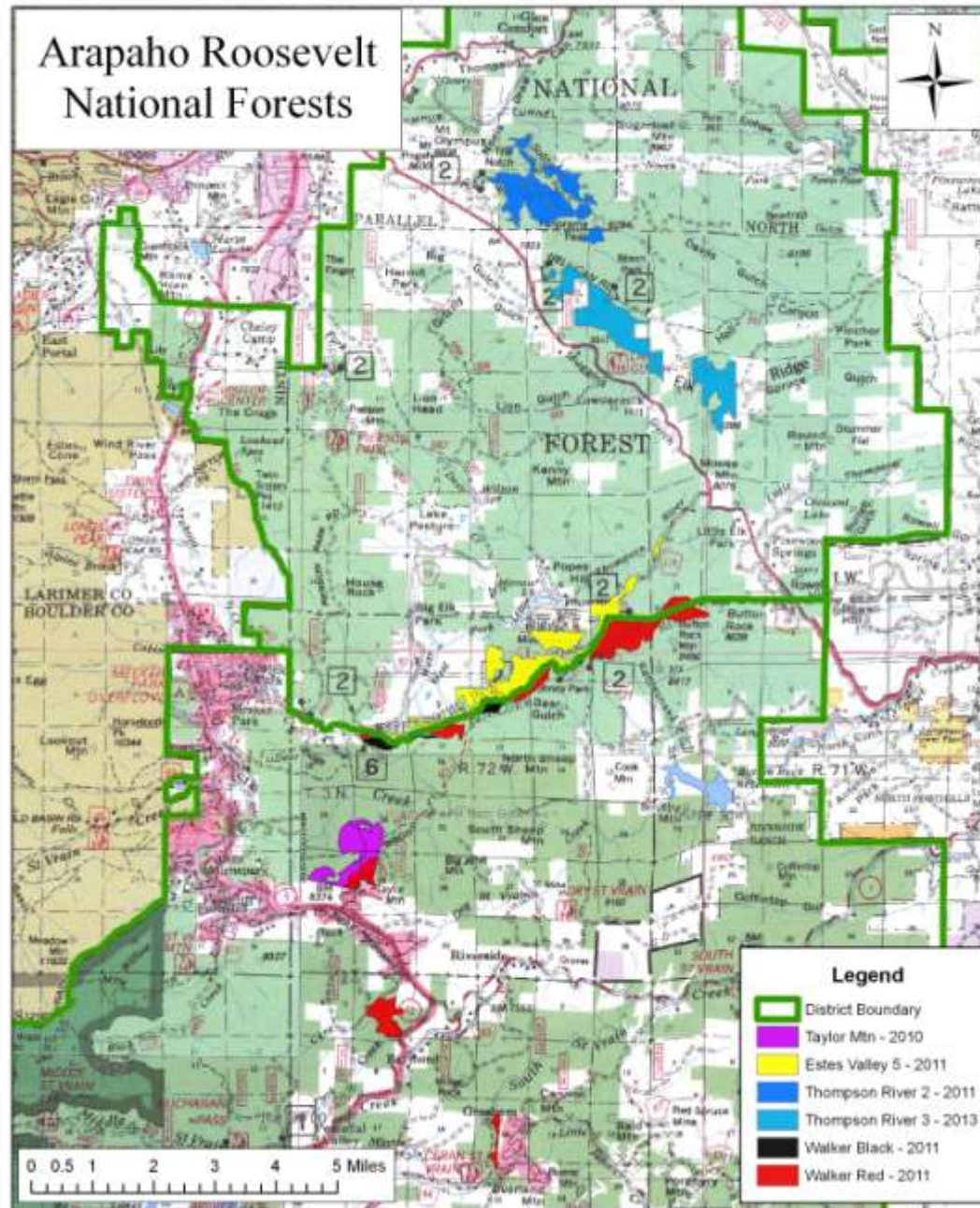
- 70% of the products removal to date are sawtimber and non-sawtimber (poles)
- Biomass (30%) removal includes landing material only (tops, limbs, and bark from sawtimber/non-sawtimber processing).

| <b>PRODUCT</b> | <b>TOTAL<br/>(tons)</b> | <b>%</b> |
|----------------|-------------------------|----------|
| Sawtimber      | 9,160                   | 43%      |
| Non-sawtimber  | 5,665                   | 27%      |
| Biomass        | <u>6,310</u>            | 30%      |
|                | 21,135                  |          |

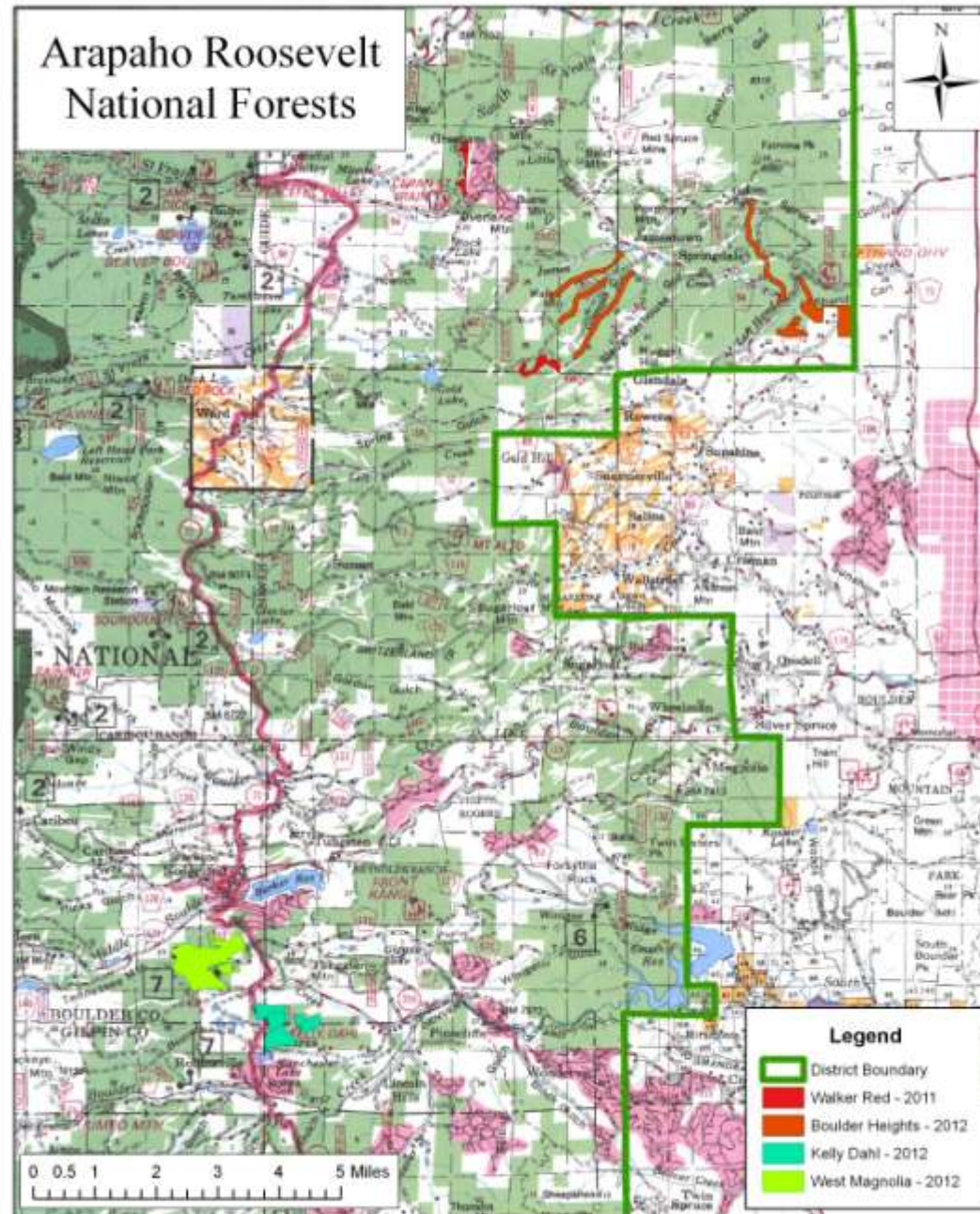
# PROJECT AREAS – ARP North



# PROJECT AREAS – ARP Central

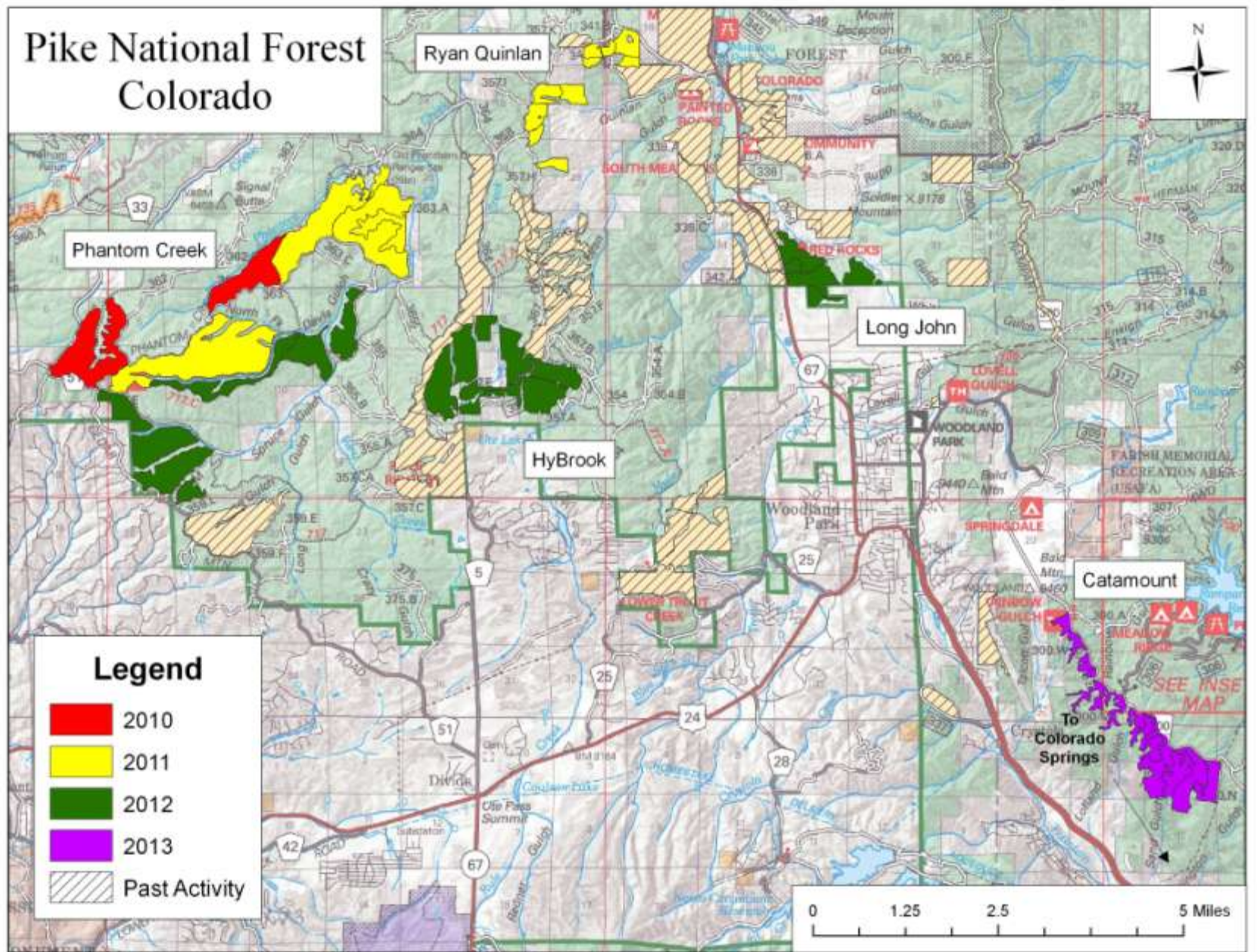


# PROJECT AREAS – ARP South





# PROJECT AREAS - PSICC



**Treated**



**Untreated**



**Treated**



**Untreated**



### Treated Aspen



### Variable Spacing Sample Marking



# FUNDING REVIEW

## TOTAL EXPENDITURES

2010 Funding: **1,000K** Allocated to the Project

| FUNDS<br>(\$1,000s ) | %   | ACTIVITY                       |
|----------------------|-----|--------------------------------|
| 204                  | 20% | Contract prep                  |
| 704                  | 71% | Task Orders (LTSC)             |
| 23                   | 2%  | Monitoring agreement with CFRI |
| 69                   | 7%  | Carried over to 2011           |

2011 Funding: **3,500K** allocated to the Project

| FUNDS<br>(\$1,000s ) | %   | ACTIVITY                            |
|----------------------|-----|-------------------------------------|
| 721                  | 20% | Contract Prep, Admin, Program Mgmt. |
| 2,675                | 75% | Task Orders (LTSC)                  |
| 166                  | 5%  | Monitoring (115 CFRI agreement)     |
| 7                    | 0%  | Carried over to 2012 (estimated)    |

# FUNDING REVIEW

## MONITORING

- \$ 23K FY 2010 Agreement with CFRI
- \$115K FY 2011 Agreement with CFRI
- \$ 108K estimated partner contributions to monitoring plan development
- \$ 5K to RMRS
- \$ 46K spent on stand exam contracts.
  - Data has been collected on **600 plots**.
  - Data will be collected on **400 plots current contract**
  - Majority of this effort was for pre-treatment plots.
  - FY12 data collection will include **post treatment** data collection in the Phantom Creek area.
- \$ 35K wildlife monitoring (Jenny Briggs and Craig Hansen)
- No analysis to date.

# FUNDING REVIEW

## MATCHING FUNDS

**FY 2010**

| <b>FUNDS<br/>(\$1,000s )</b> | <b>PROJECT</b>                                  |
|------------------------------|---|
| 834                          | Task order costs                                |
| 142                          | Contract prep                                   |
| 20                           | Pre-commercial thinning                         |
| 25                           | Noxious Weed Treatment – Hayman                 |
| 34                           | CUSP Hayman restoration (FS contribution)       |
| 10                           | CFRI contribution to monitoring agreement       |
| <u>340</u>                   | Other partner contributions (Hayman, Catamount) |
| <b>1,405</b>                 | Total   |

# FUNDING REVIEW

## MATCHING FUNDS

**FY 2011**

| <b>FUNDS<br/>(\$1,000s )</b> | <b>PROJECT</b>  |
|------------------------------|---|
| 813                          | Contract prep & administration                            |
| 278                          | Task order costs  |
| 288                          | Hayman reforestation                                      |
| 163                          | CUSP Hayman restoration (FS contribution)                 |
| 11                           | RMFI Hayman restoration (FS contribution)                 |
| 23                           | CUSP Pine Creek restoration (FS contribution)             |
| 34                           | CFRI contribution to monitoring agreement                 |
| 64                           | Partner contributions to developing monitoring plan       |
| 35                           | Wildlife Monitoring Grant (Jenny Briggs and Craig Hansen) |
| <u>1,938</u>                 | Other partner contributions (DW, Hayman, Catamount)       |
| <b>3,647</b>                 | Total   |



# FY 2012 Potential Projects

| <b>PROJECT</b>                          | <b>FOREST</b> | <b>Acres</b> |
|---|---------------|--------------|
| Redfeather 1                            | ARP           | 559          |
| West Magnolia (CFLR and matching acres) | ARP           | 306          |
| Kelly (CFLR and matching acres)         | ARP           | 174          |
| Boulder Heights                         | ARP           | 491          |
| South Zone Chipping ?                   | ARP           | 927          |
| Phantom Creek 4                         | PSICC         | 970          |
| Long John                               | PSICC         | 294          |
| HyBrook                                 | PSICC         | <u>569</u>   |
| Total                                   |               | 4,290        |

# LESSONS LEARNED

- Late arrival of funds in 2010 and 2011 has created contracting challenges.
- Multiple partner commitments creates matching fund opportunities and challenges.
  - Denver Water
  - LTSC product mix
  - WBCHFI
  - CWPPs
  - NEPA ready projects
  - Bark beetle theatre hazard reduction

# LESSONS LEARNED

- No common understanding regarding “restoration” treatments/objectives.
  - As a result the final monitoring plan target conditions were less specific than originally intended.
- More variation in project units than expected.
- Treatments have not yet included some restoration goals such as the creation of large openings due to NEPA constraints.

# NEXT STEPS

- Complete implementation (prep & award task orders) in the Trout West Phase 1 & 2 Project Area. (PSICC)
- Initiate work in the Catamount Project Area. (PSICC)
- Review planning pipeline for emphasis on mechanized treatments with product utilization. (PSICC)
- Incorporate other restoration goals such as opening creation and clumpiness.

# NEXT STEPS

- Complete implementation (prep & award task orders) for 2013 projects. (ARP)
- Complete planning in Forsythe project area Spring 2012. (ARP)
- Collect additional pre- and post- treatment monitoring data.
- Finalize Social monitoring with CFRI.